



R I V E R  
— ASSOCIATION —

Orange County Landowner Meeting  
June 5, 2019

Photo credit: Liz Stabenow





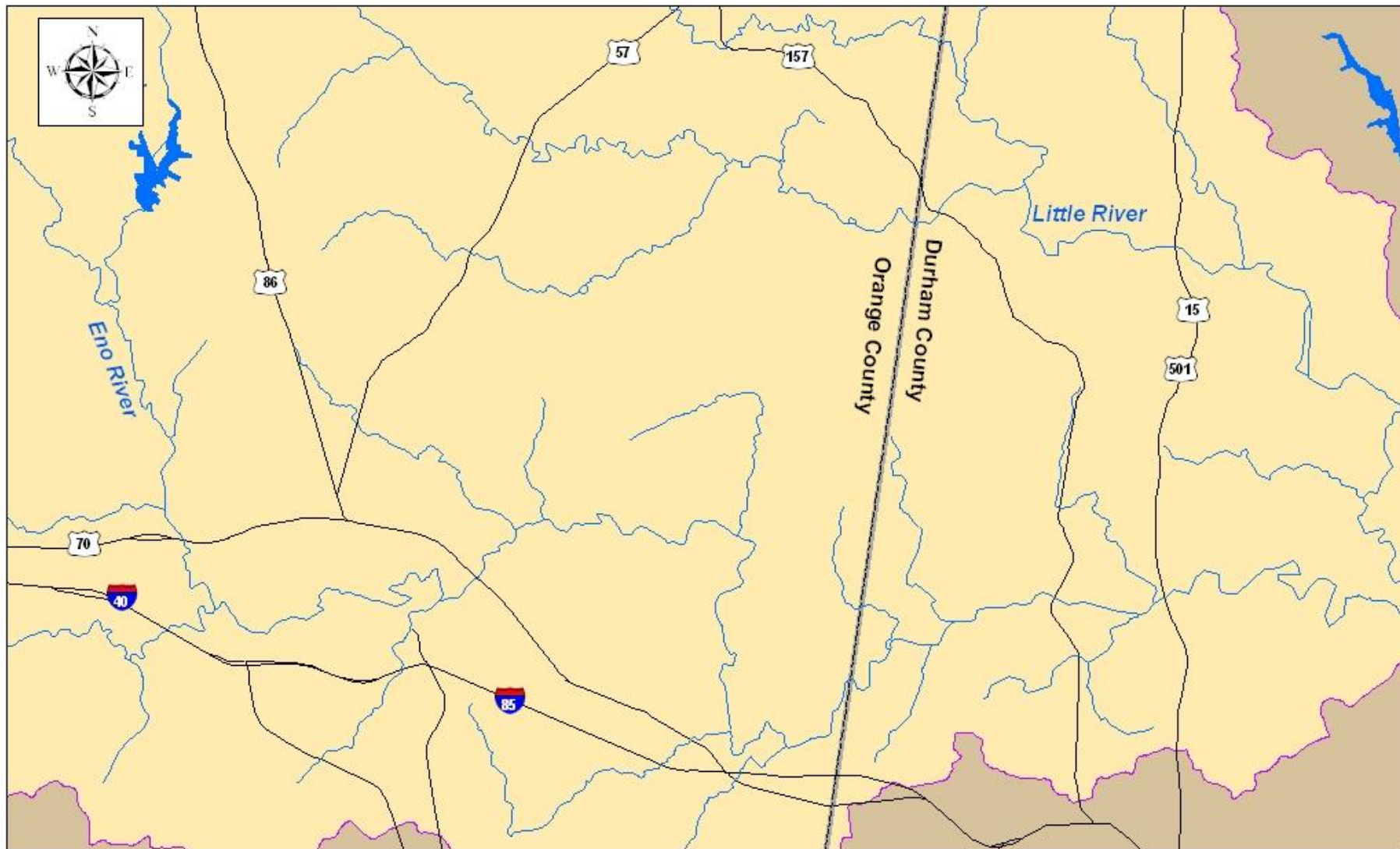
Saving the Places **You** Love since 1966

Established in 1966, the Eno River Association works to protect and restore exceptional places that provide our region with clean water and healthy forests, wildlife habitat and natural areas, and open space.

over

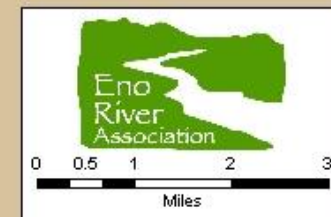
**7,000** acres

of land protected to date for the benefit of current and future generations

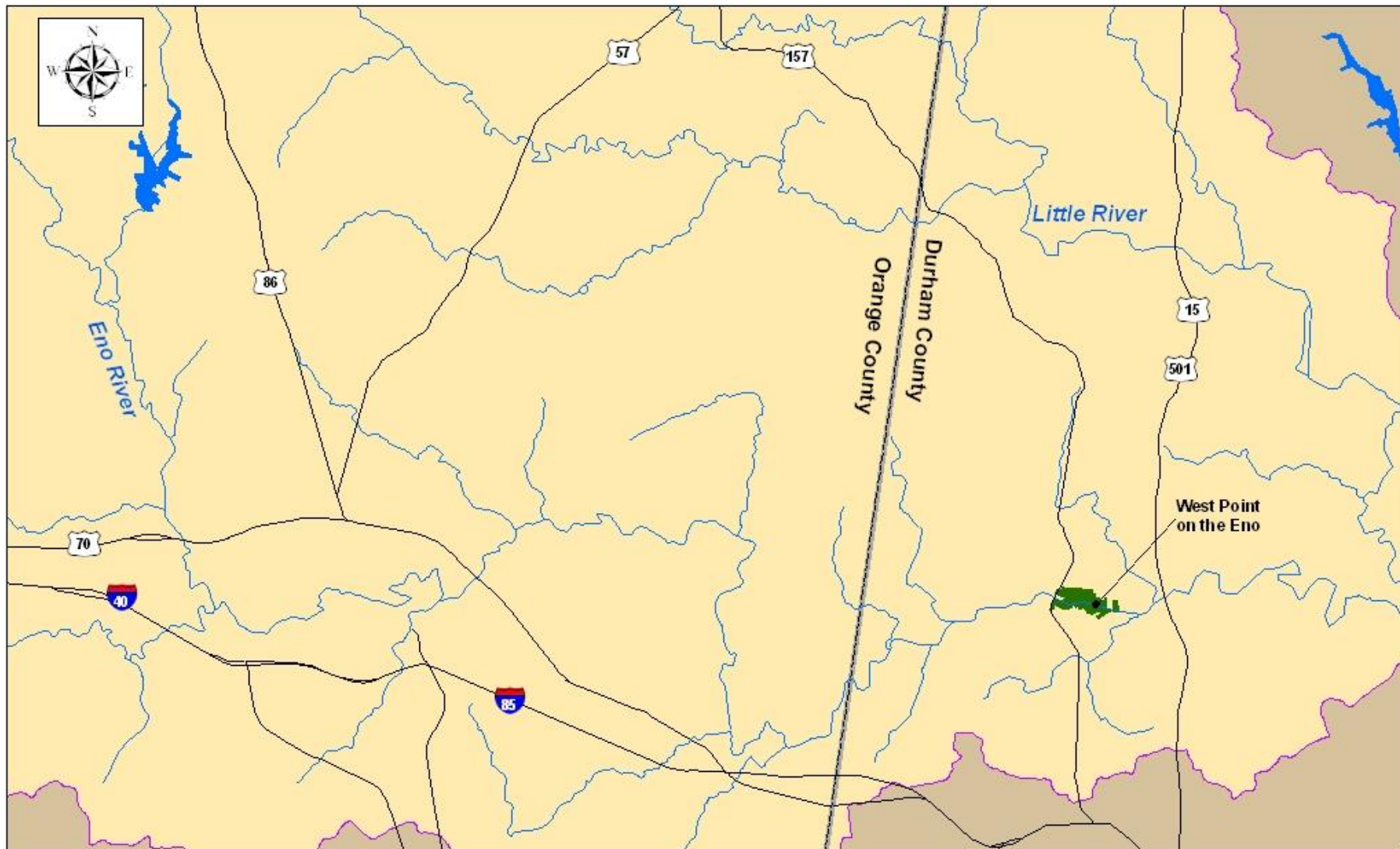


- Legend**
- ERA/Partner Protected Land
  - Eno River Basin
  - Streams
  - Major Roads

# Eno River Association *Protected Lands Map* 1966



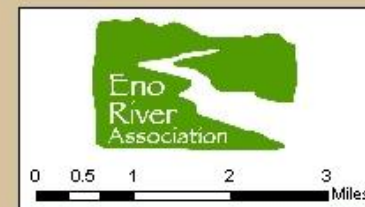


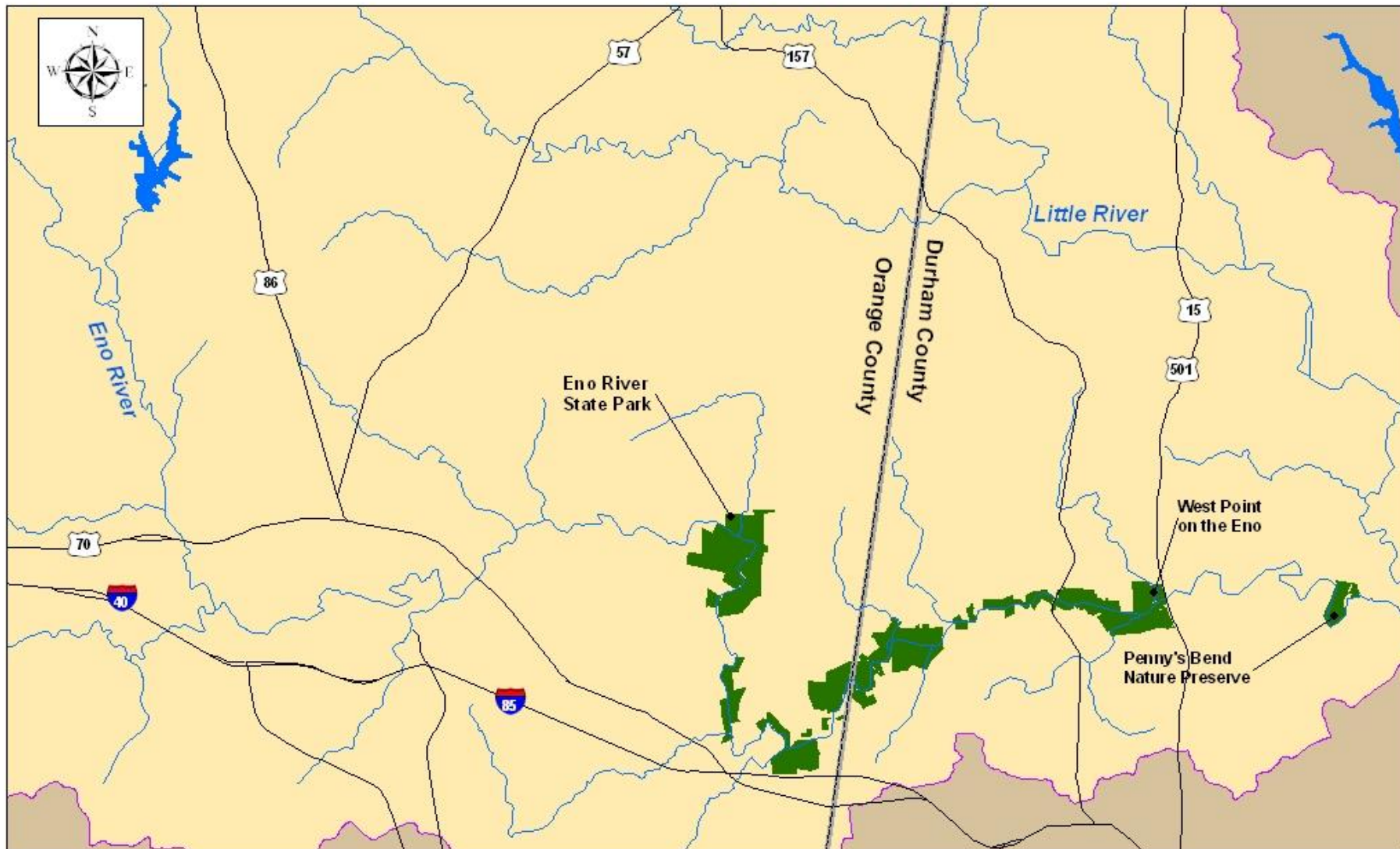


**Legend**

-  ERA/Partner Protected Land
-  Eno River Basin
-  Streams
-  Major Roads

# Eno River Association *Protected Lands Map* 1970





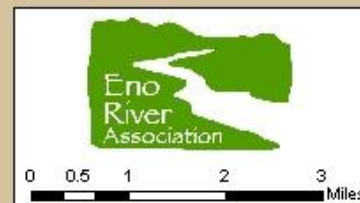
**Legend**

- ERA/Partner Protected Land
- Eno River Basin
- Streams
- Major Roads

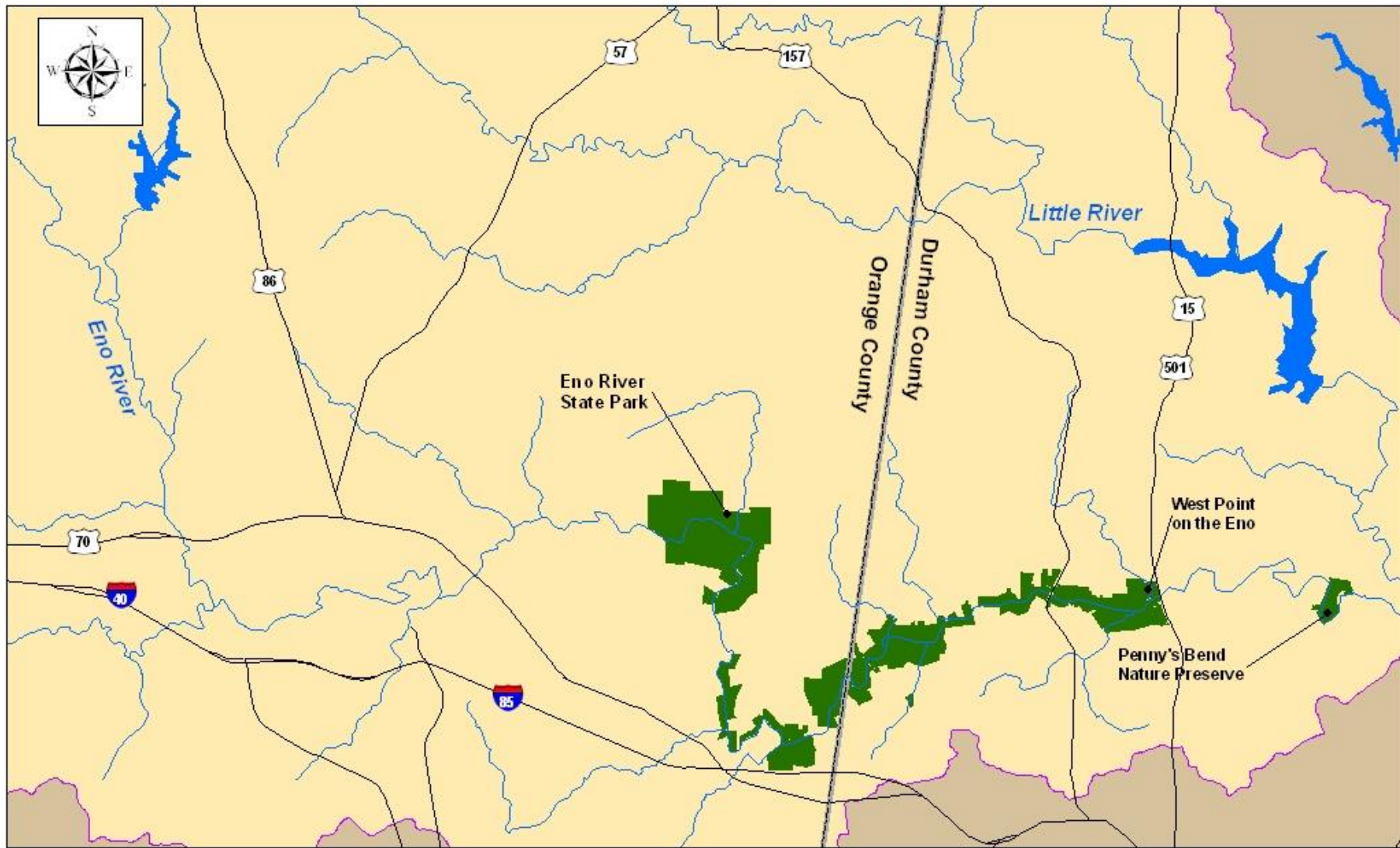
# Eno River Association

## *Protected Lands Map*

### 1980







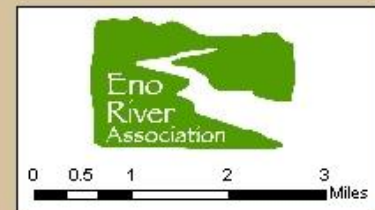
**Legend**

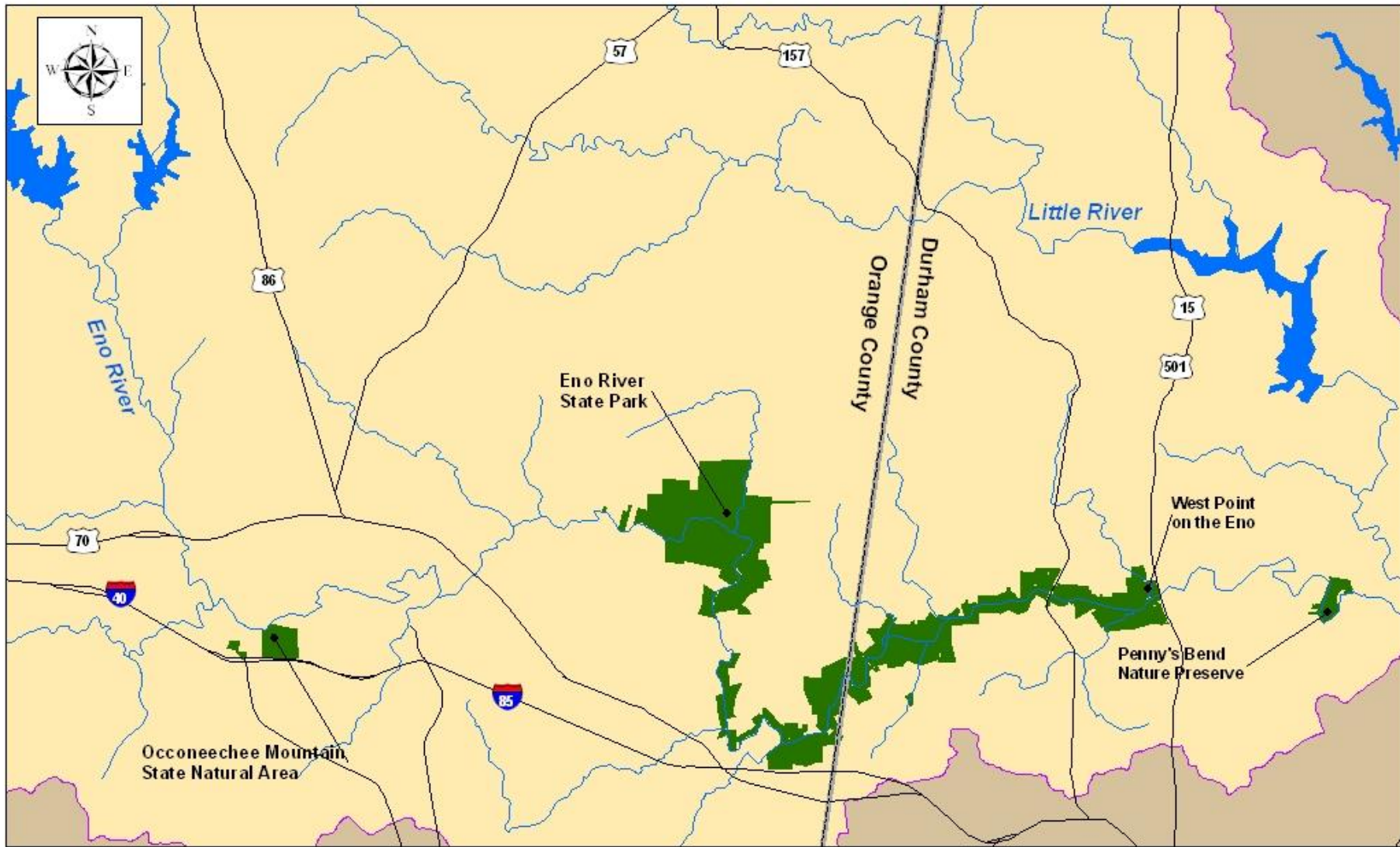
- ERA/Partner Protected Land
- Eno River Basin
- Streams
- Major Roads

# Eno River Association

## *Protected Lands Map*

### 1990





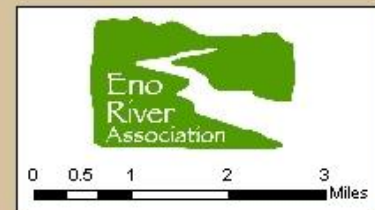
**Legend**

- ERA/Partner Protected Land
- Eno River Basin
- Streams
- Major Roads

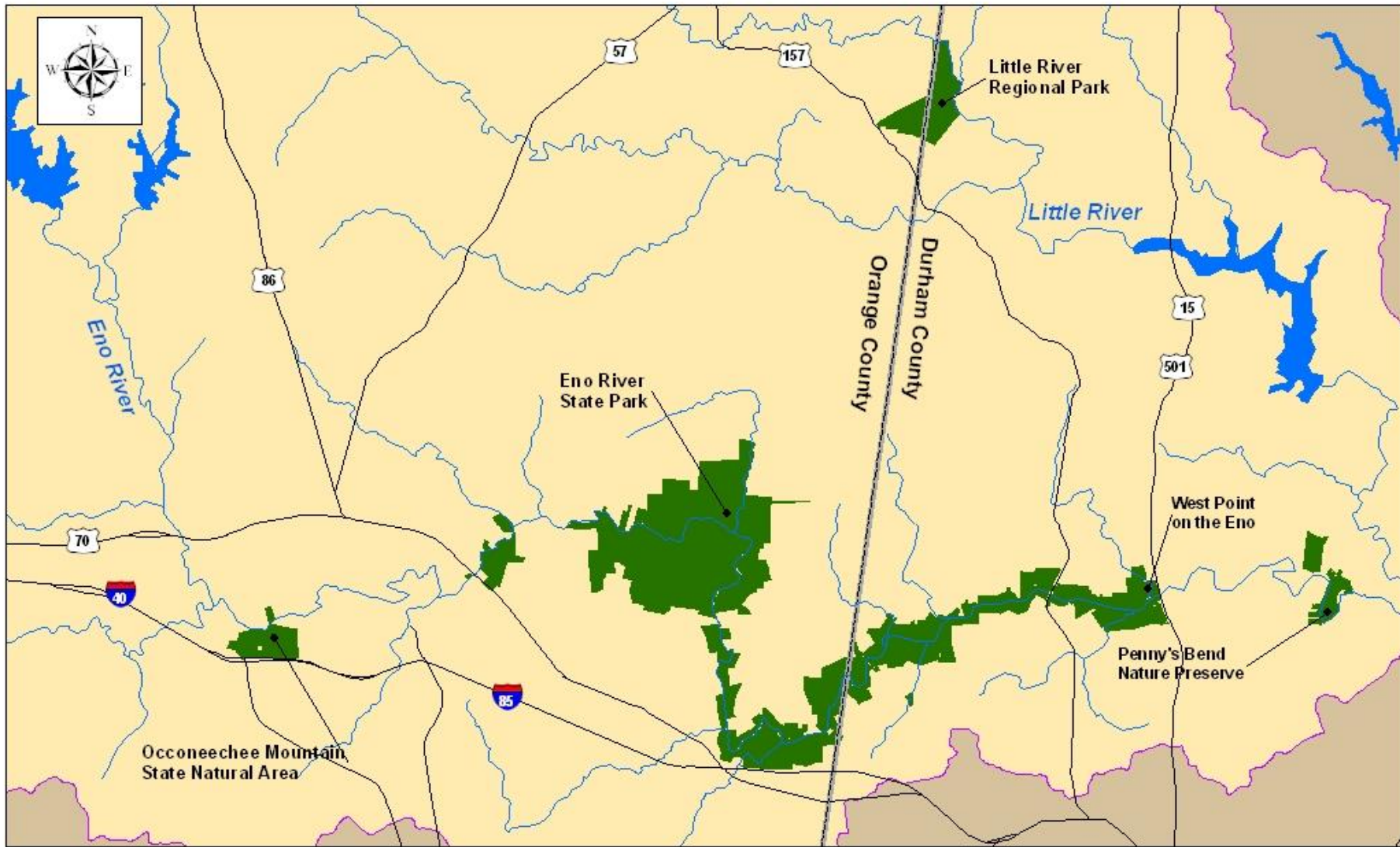
# Eno River Association

## *Protected Lands Map*

### 2000







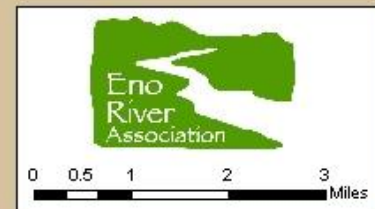
**Legend**

- ERA/Partner Protected Land
- Eno River Basin
- Streams
- Major Roads

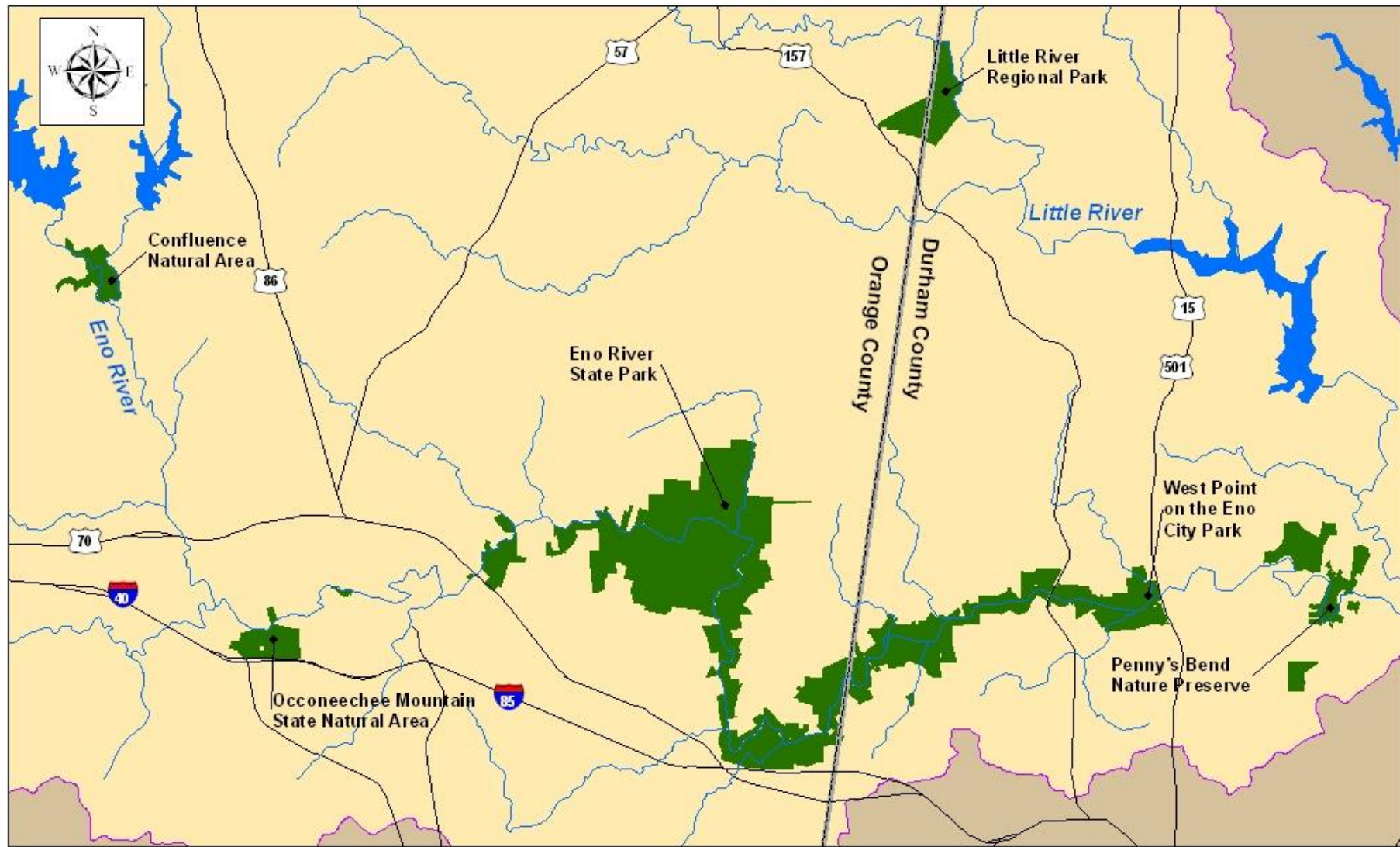
# Eno River Association

## *Protected Lands Map*

### 2005





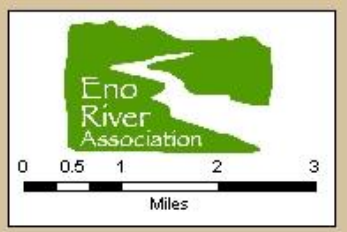


- Legend**
- ERA/Partner Protected Land
  - Eno River Basin
  - Streams
  - Major Roads

# Eno River Association

## *Protected Lands Map*

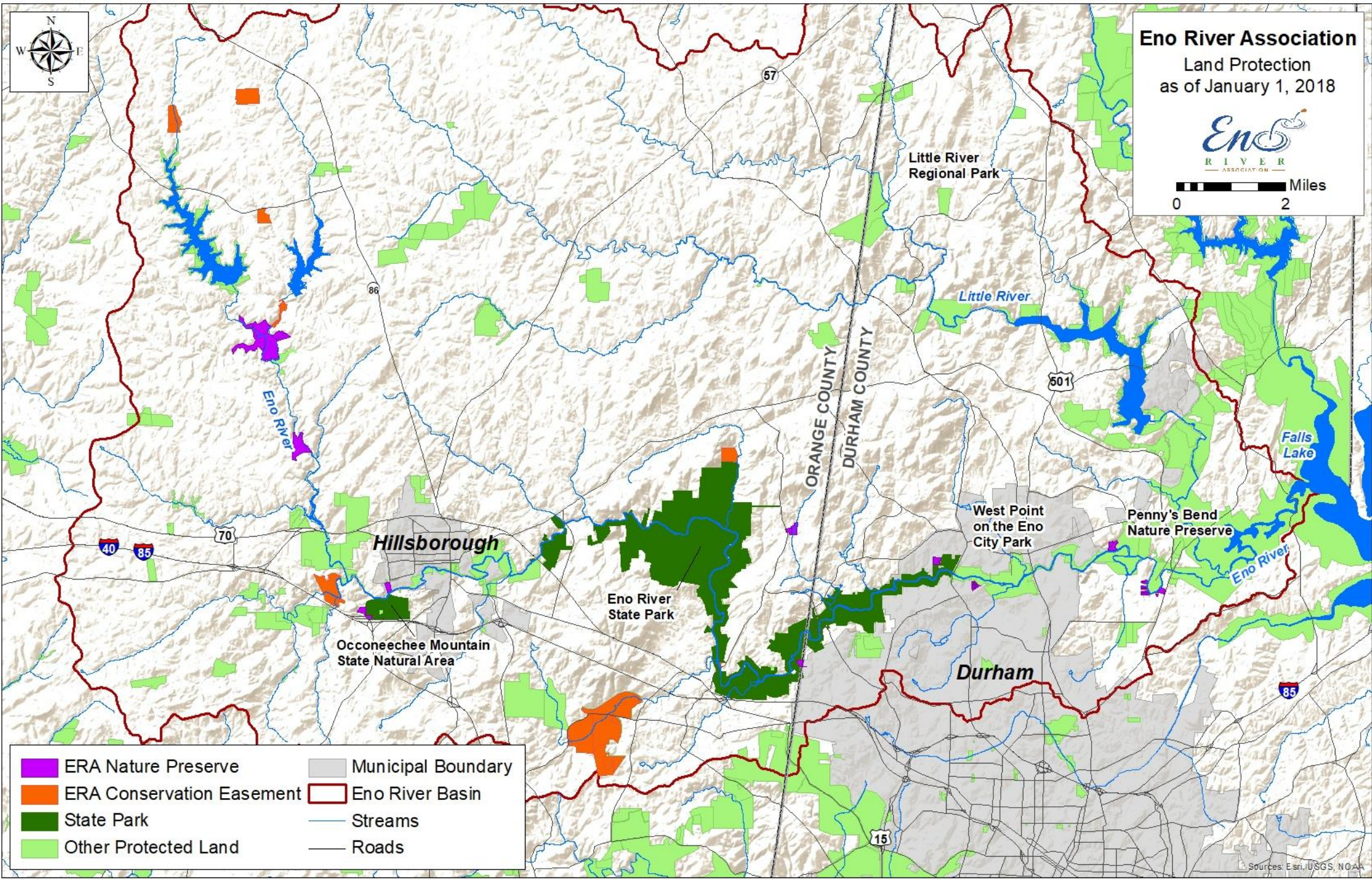
### 2010







# Eno River Association Land Protection as of January 1, 2018



ERA Nature Preserve	Municipal Boundary
ERA Conservation Easement	Eno River Basin
State Park	Streams
Other Protected Land	Roads

Sources: Esri, USGS, NOAA



# Orange County Lands Legacy Program

## **Purpose: Protect high-priority natural and cultural resource lands**

- Voluntary
- Partnerships

## **Targeted Lands for Conservation:**

- Parkland
- Prime Farmland/Forestland
- Riparian Buffers, Natural Areas
- Historic/Cultural assets

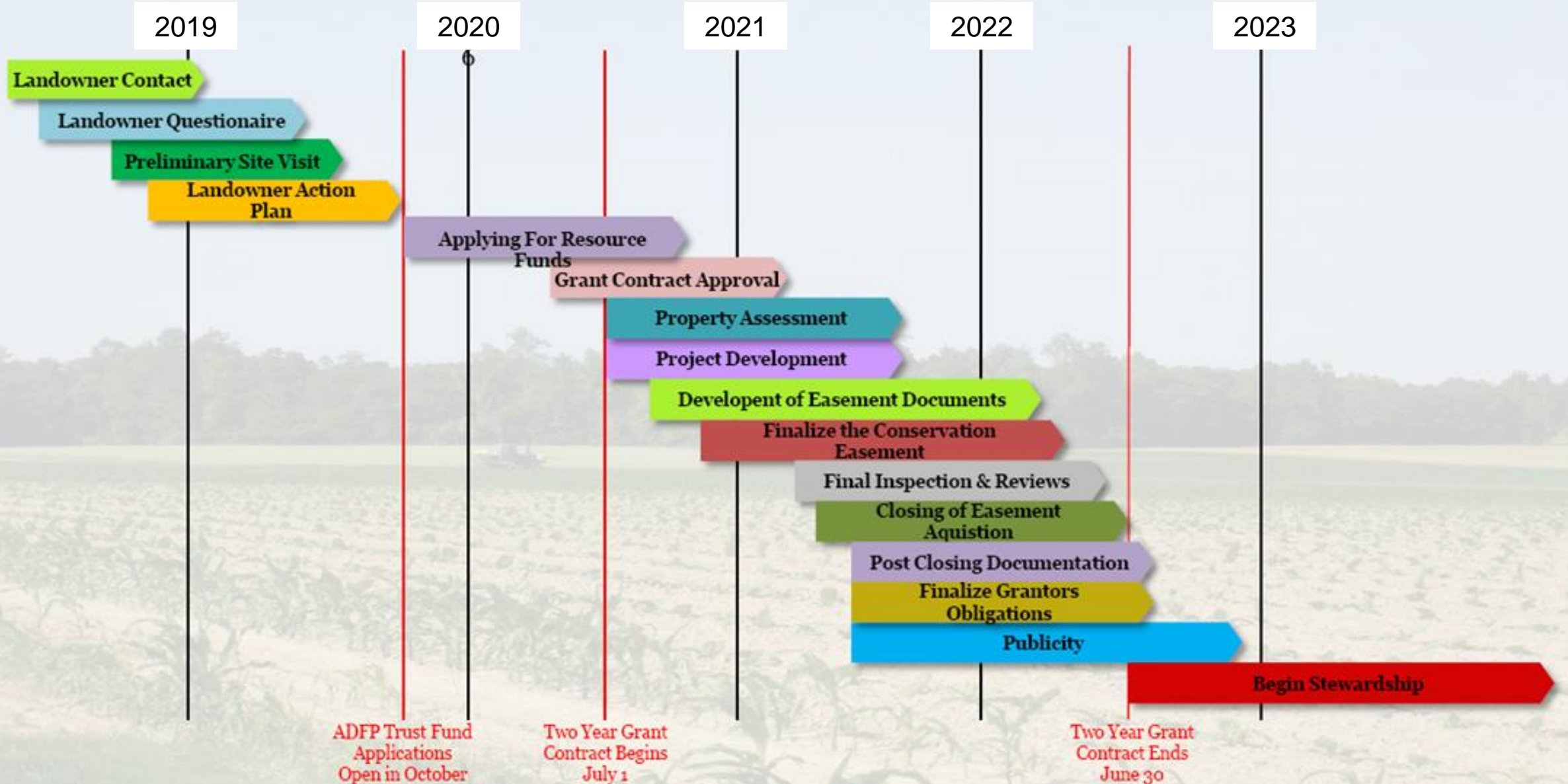
## **Protection Totals:**

- over 3,000 acres conserved
- over 2,000 acres of conservation easements (farm and natural)





# Sixteen Steps to Conservation Easement Acquisition





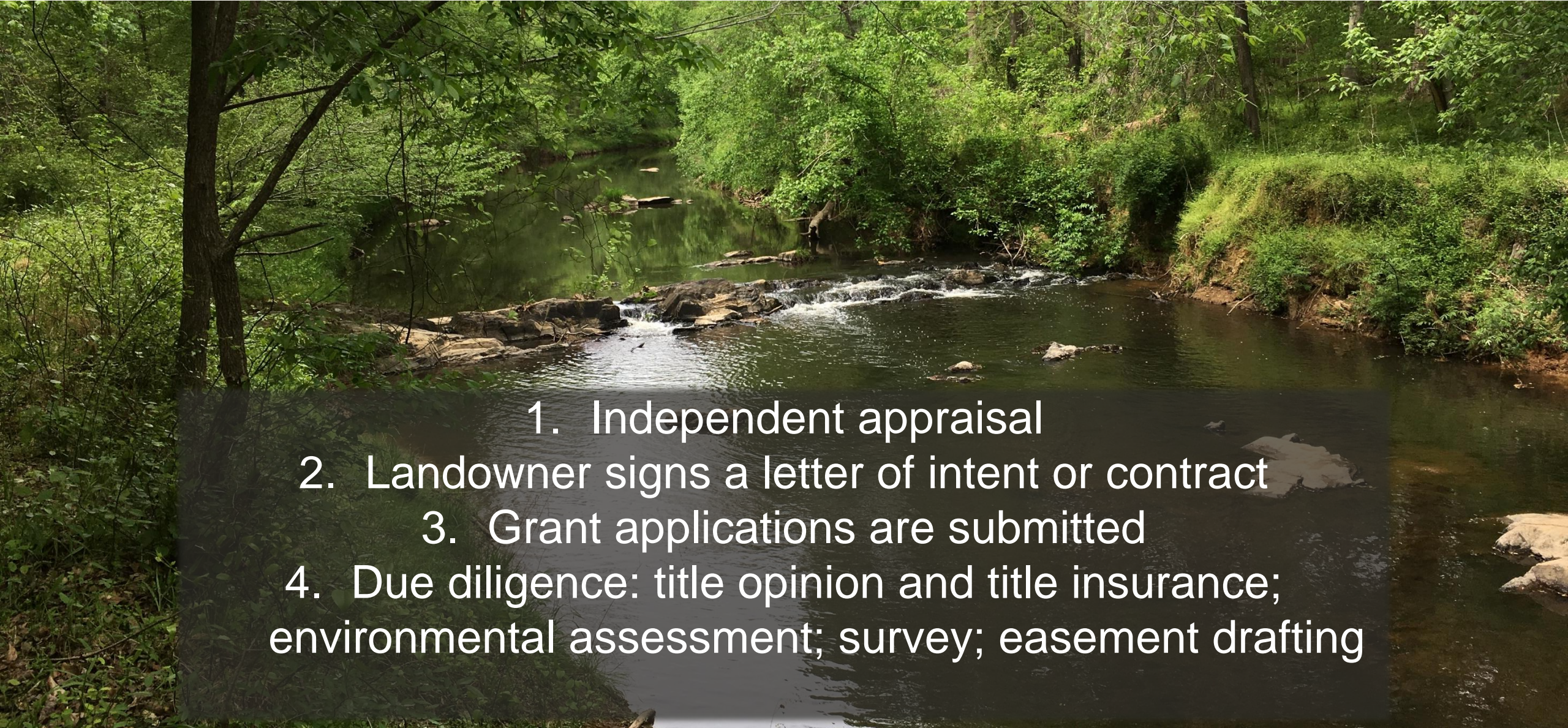
# Project Approval Process

1. Project Selection Criteria
2. Staff visits property and landowner
3. Develop project proposal & funding plan
4. Land protection committee reviews proposal and makes recommendation
5. Board reviews and approves project





# Committing to Conservation

- 
1. Independent appraisal
  2. Landowner signs a letter of intent or contract
  3. Grant applications are submitted
  4. Due diligence: title opinion and title insurance; environmental assessment; survey; easement drafting



# Making it Official

1. Easement drafting, review, and approval
2. Baseline documentation
3. Document approvals by funder
4. Closing

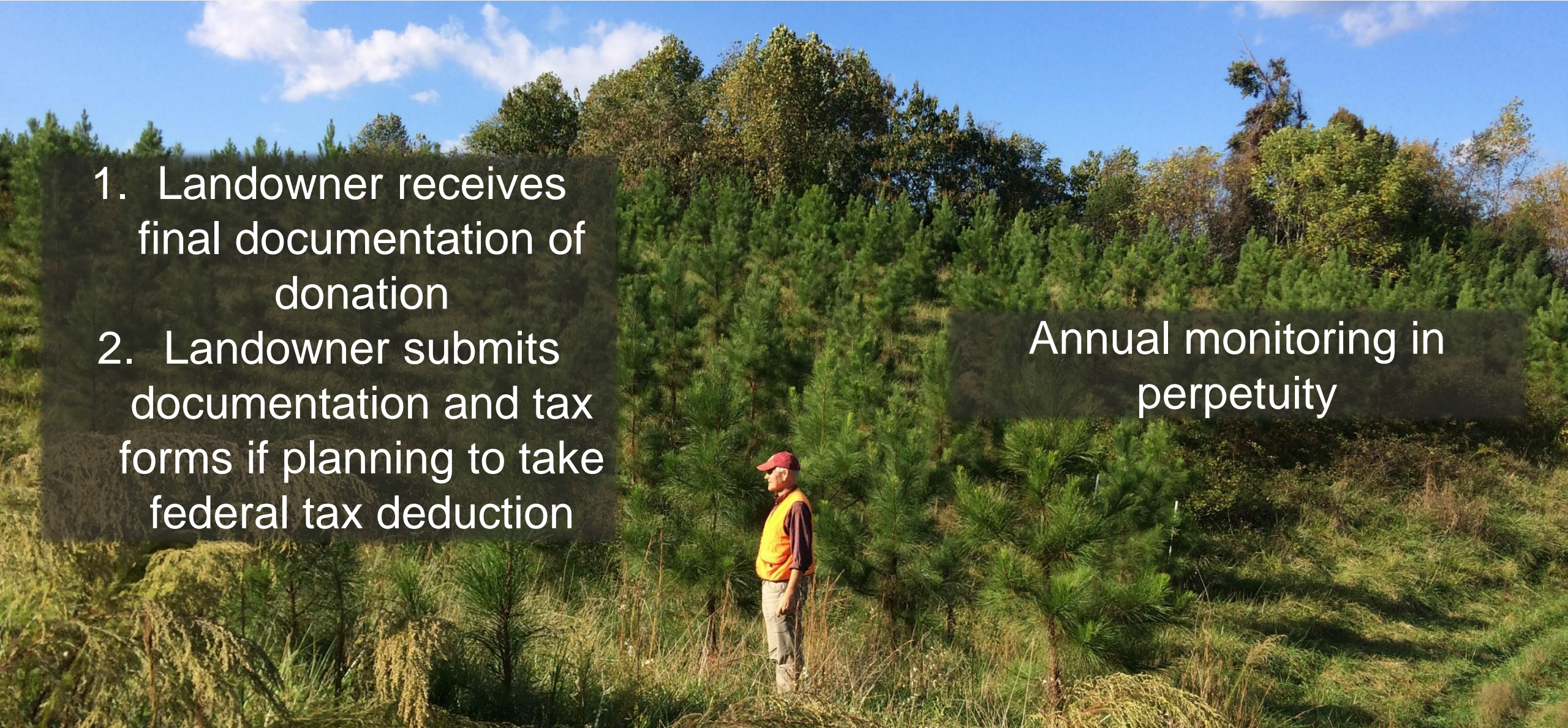




# After Closing and Onwards

1. Landowner receives final documentation of donation
2. Landowner submits documentation and tax forms if planning to take federal tax deduction

Annual monitoring in perpetuity







**Kim Livingston**  
Director of Conservation and Stewardship

[kim@enore.org](mailto:kim@enore.org)  
919-620-9099 x 206

