

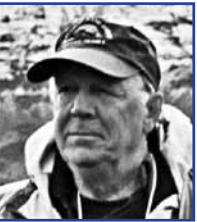
PROTECTING OUR LAND FOR

future generations



Annual Report 2011–2012

From The Chair



As Triangle Land Conservancy progressed through our 29th year, we began the twin processes of reflection and assessment which typically accompany preparation for a significant anniversary. We look back with deep gratitude to longtime Triangle residents for their prescient decision nearly 30 years ago to found TLC. Since then, Triangle Land Conservancy has played an important role in blending the growth and vitality of our region with open spaces that provide a variety of benefits for residents and that are readily recognized by those relocating to the area. Today the healthy and vibrant Triangle is consistently voted in national top ten lists for livability and business, as well as being recently acknowledged as top ten in eco-friendliest, healthiest, and cleanest. Part of the Triangle's success lies in its decision to protect our natural resources—our water and our land.

It has not always been easy. The economic crisis of 2008 continues to present challenges in the conservation funding landscape. However, TLC's decision a few years ago to change the way we work, moving away from the concept of protecting our resources from something, to protecting our resources for something—safeguarding clean water, preserving wildlife habitat, keeping local farms and food in our community, and providing places for people to connect with nature—has allowed us to maximize every dollar raised, develop innovative community partnerships and connect with new people.

The powerful results of this decision were on full display in 2011–2012. This year TLC completed five projects that protect water quality for over 500,000 Triangle residents, while also providing other benefits such as protection of wildlife habitat and connecting people to nature. For example, the Neuse River Cypress Swamp project protects 1,200 feet of river frontage for water quality as well as 17 acres of wetlands, habitat for Bald Cypress trees, and numerous wetland plants and birds, including a nesting site for Bald Eagles. In addition, the river frontage could provide a critical link for a future Mountains-to-Sea trail and a potential stop along the Neuse River paddle trail.

Triangle Land Conservancy protected over 500 acres of family farms in Johnston and Chatham counties, including continuing our work with prime farmland in Silk Hope, an area of northern Chatham County with a rich farming history. This area has been targeted as a priority farmland protection area in Chatham County's Farmland Protection Plan which was developed in partnership between TLC and the Chatham County Board of Commissioners. Conservation easements benefit not only the quality of soils and water; they also help protect the family farm and agriculture which remains our state's single largest economic driver.

The Irvin Nature Preserve and Farm in Orange County continues to showcase how conservation can serve as a catalyst in meeting social needs. By opening agriculture fields to two community-based non-profit organizations—Orange County Partnership for Young Children and Interfaith Food Shuttle—fresh, healthy food was grown on Irvin Nature Preserve and Farm and distributed to families in need. Our third partner at Irvin, Learning Outside, provides early environmental education to our youngest citizens, helping them to connect with nature.



Our work this year to preserve wildlife habitat included restoring native piedmont prairies at Temple Flat Rock in Wake County and Horton Grove Nature Preserve in Durham County, and a significant forest restoration project in White Pines Nature Pre-

serve in Chatham County. White Pines, parts of which include a former loblolly pine plantation, is home to a regionally rare stand of white pine trees, presumed to be vestiges from the last ice age. When TLC noticed the white pine population was showing signs of decline and younger white pines were being eaten by the growing deer population, we launched a restoration project to plant approximately 1,900 white pine seedlings and also allow a native oak-hickory forest to re-emerge.

Of course, without the annual support of individual donors, corporations, foundations and granting agencies, these multi-value projects would not be possible. Your financial contributions helped TLC protect nearly 800 acres this year. Your support allows us to offer hikes and outings and keeps our five nature preserves open year-round and free to the public.

A major transition occurred in 2011–2012 with the departure of Kevin Brice whose leadership had positioned TLC on the leading edge of community conservation. We had the pleasure of working on many projects with Kevin over the years—from the successful completion of the \$5.5 million Our Water, Our Land campaign to protecting the 613-acre Brumley Forest in Orange County. Kevin left TLC well poised to chart the path for conservation for our next 30 years, and beyond.

Charting that path forward and creating a business model that recognizes the new realities of land protection is Chad Jemison, TLC's new executive director. Chad is a veteran in the environmental field, most recently working with Scenic Hudson Land Trust in New York. Prior to that experience he headed the Huyck Preserve and Biological Research Station, also in New York. He brings to TLC both the vision and on-the-ground skills necessary for increasing the capacity of our organization and the pace of land protection for the benefit of all Triangle residents. We know you will enjoy working with Chad and will be energized by his enthusiasm for the future of TLC.

On behalf of TLC's Board of Directors and staff, thank you for your commitment to local conservation and support of Triangle Land Conservancy.

ANNE STODDARD
IMMEDIATE PAST CHAIR,
TLC BOARD OF DIRECTORS

LARRY TOMBAUGH
CHAIR, TLC BOARD OF DIRECTORS

PROTECTING WORKING FARM LANDS: For Local Food, Water & Quality of Life

North Carolina has a strong, deeply-rooted history in agriculture—it remains our state’s single largest economic driver. Roughly 85% of North Carolina’s farms are small family farms, and Triangle Land Conservancy wants to ensure those farms remain working farms for future generations.

Through the use of conservation easements, which protect land and water quality, TLC can also help ease the pressure farmers may feel from encroaching development. By partnering with local farmers, TLC can protect land and water while ensuring our region can grow fresh, local food for generations to come.

During 2011–2012, Triangle Land Conservancy protected farms in Johnston and Chatham counties, including continuing our work to protect 1,500 acres of prime farmland in Silk Hope, an area of northern Chatham County with a rich farming history. This area has been targeted as a priority farmland protection area in Chatham County’s Farmland Protection Plan.

Holding Family Farm, Johnston County



TLC has been working with the Holding Family since 2003 to place working lands conservation easements over their family farm in Johnston County along Buffalo Creek. This year, the Holdings donated two additional conservation easements, protecting approximately 120 acres. The protected tracts adjoin Buffalo Creek watershed, a major tributary to the Little River (one of the most ecologically significant streams in the Triangle) and includes a portion of the 100-year floodplain. A majority of the property is forested, and the agricultural fields are planted in a rotation of tobacco and soybeans. This easement protects local water resources and food supply, and also provides important wildlife habitat and preserves the rural character of the landscape. Protection of this property will bring the total area protected with the Holding family to over 900 acres.

Cohen Farm, Chatham County



Murray and Esta Cohen firmly believe that “if you take care of the land, the land will take care of you.” In 1986, they hosted their first of many farm tours and it continues to be a place for beginner farmers to learn about sustainable

and organic farming. On this land, which has been in production for 40 years in Silk Hope, the Cohens have produced beef, pork and eggs for local restaurants, farmer’s markets and Community Sponsored Agriculture, as well as organic hay and grain. Cohen Farm also includes forest, certified organic pastureland, a pond and an ephemeral stream.

In 2012, TLC closed on the 102-acre Cohen Farm conservation easement. The easement protects forest, certified organic pastureland, over 100 acres of prime soils, and an historic homestead from the 1800s. The easement was purchased through bargain sale with funds provided by the NC Agricultural Development and Farmland Preservation Trust Fund and the USDA’s Farm and Ranchland Protection Program.



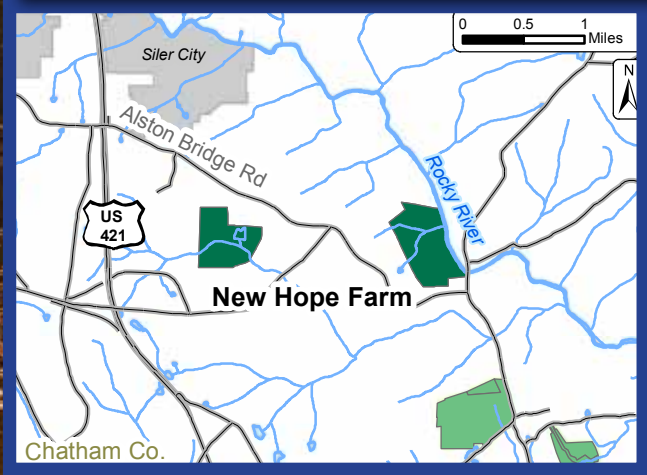
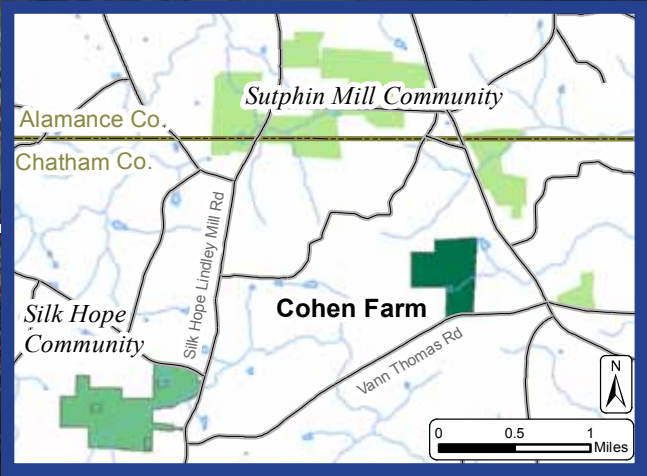
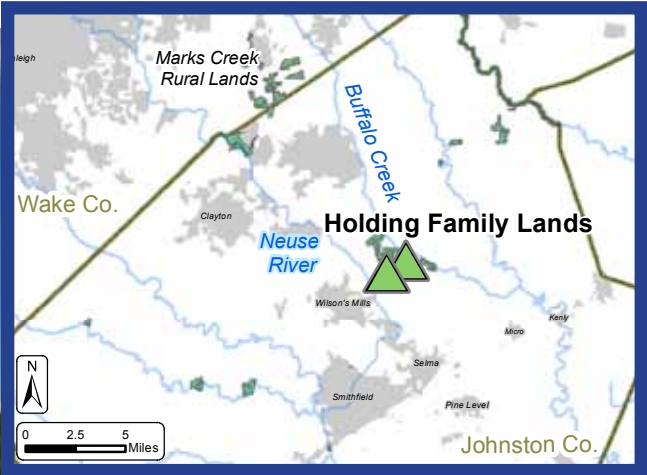
New Hope Farm, Chatham County



John and Carol Dykers, owners of New Hope Farm, have long understood the value of protecting water and soil quality on their 280-acre farm. Located just outside Siler City, New Hope Farm is a long-time partner of TLC and the Chatham Soil and Water Conservation District and has participated in many land and water conservation projects, winning awards along the way. Their farm has also been at the forefront of antibiotic-free beef production since the mid-1960s and provides a base of operations for one of North Carolina’s first direct marketing beef programs.

In 2011, TLC, in partnership with the Chatham Soil and Water Conservation District, closed on two conservation easements on New Hope Farm. These easements provide a 300-foot water quality buffer over 15 acres along the Rocky River, protecting almost 3,800 linear feet of stream and river, while protecting prime soils, additional streams, and wetlands on the remaining 265 acres. This stretch of the Rocky River is Nationally Significant Aquatic Habitat, and contains

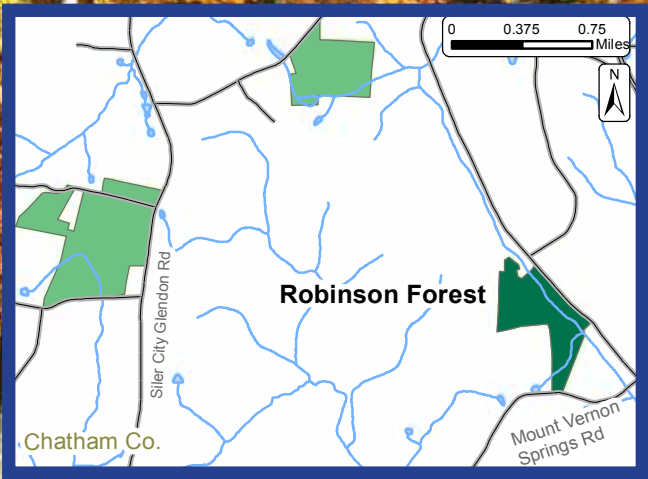
TLC's Public Benefits



the Rocky River Basalt Bluffs and Levees, a Nationally Significant Natural Heritage Area.

Funding for this project was provided by the NC Agricultural Development and Farmland Preservation Trust Fund and the USDA Grassland

Reserve Program. Additional funds for transaction costs were provided by the NC Foundation for Soil and Water Conservation and a grant from Walmart’s Farmland Preservation program, as well as the Dykers themselves.



IMPROVING AND PROTECTING THE TRIANGLE'S WATER QUALITY AND SUPPLY

Safeguarding water quality has always been a central focus of Triangle Land Conservancy's mission. Since 1983, TLC has protected land along key streams and reservoirs to keep drinking water clean for our growing population and economy. These lands create a buffer between developed areas and waterways, and serve as a natural filter, absorbing pollutants before they reach the water supply.

TLC is an active leader in water quality efforts, including the Upper Neuse Clean Water Initiative which focuses on conserving the watershed for Raleigh's drinking water supply.

In 2011–2012, TLC completed five projects that will protect our water for generations to come.

Steep Hill Creek Bottomlands, MacNair's Country Acres, Wake County

MacNair's Country Acres is located in one of the last remaining rural areas of the Swift Creek Watershed. The urban farm, the passionate vision of Caroline MacNair Carl, has long been an institution in the equestrian community and serves as a resource for youth programs, agricultural extension education and equestrian recreation.



In the fall of 2011, Caroline donated a 39-acre conservation easement on Steep Hill Creek Bottomlands in Wake County, protecting 24 acres of floodplain forest and over one mile of Steep Hill Creek and unnamed tributaries that feed into Swift Creek and Lake Benson. [Note: Sadly, Caroline passed away in the fall of 2012. She bequeathed full ownership of this property to TLC.] Lake Benson serves as an auxiliary drinking water supply for the City of Raleigh.

The property connects with North Carolina State University agricultural lands and Yates Mill Pond protected land to create a three-mile continuous riparian corridor. This corridor preserves water quality and helps to enhance the Yates Mill Pond and Swift Creek Bottomland Forest Significant Natural Heritage Areas.

Robinson Forest, Chatham County

Tick Creek in western Chatham County is on the NC Division of Water Quality's list of impaired streams and provides habitat to two rare aquatic species, the Carolina Creekshell and Creeper. Robinson Forest, owned by Charles and Kathryn Robinson, includes almost 4,000 feet of tributary streams that drain into Tick Creek, a main tributary of the Rocky River. In 2011, TLC received a 94-acre conservation easement from the Robinsons to protect over 1.3 miles of tributary streams that drain into Tick Creek, a major tributary to the Rocky River. Stream buffers along the property's perennial and ephemeral channels will help protect water quality in this very sensitive stream corridor. Transaction costs for the project were funded through the Clean Water Management Trust Fund.

New Hope Creek—Duke Forest Tract, Orange County

Through a bargain sale, TLC purchased a 25-acre conservation easement on a tract of land bordering TLC's Johnston Mill Nature Preserve in Orange County. The conservation easement was purchased from Duke University as part of an agreement that helped Duke acquire the larger 60 acre property. The Duke Forest Conservation Easement protects over 1,100 feet of tributary streams that drain into New Hope Creek, a TLC priority area and major tributary to Jordan Lake. Conservation of this land will help protect water quality in this very sensitive stream corridor. Transaction and acquisition costs for the project were funded through the Clean Water Management Trust Fund.

This acquisition is a significant event for Duke University. This tract of land is part of Duke Forest's continuing commitment to protecting natural resources, and is the first of its 7,050 acres to be placed under conservation easement.

**Bend in the River and Cattail Branch Farms,
Johnston County**



In 2011, John W. Narron donated conservation easements on two Johnston County farms that have been in his family for generations. Both farms are on the Little River, south of Wendell. The Narron Farm projects are the first TLC conservation easements along the Little River in Johnston County. The Little River is considered one of the cleanest and most ecologically important streams in the Triangle. It supports the federally endangered Dwarfwedge mussel and Tar River Spineymussel, as well as several other rare or threatened aquatic species. Johnston County has designated the Little River watershed from the Wake/Johnston county line to NC Highway 42 as an Environmentally Sensitive Watershed.

The NC Natural Heritage Program has designated this section of the Little River as having National Significance, the highest level of significance attributed to a natural area, and has designated an area to the southwest of this easement as Little River Galax Bluffs because it contains locally uncommon galax.

In addition to Mr. Narron's generosity, funding for this project was provided by mini-grants from the Clean Water Management Trust Fund, by an Environmental Enhancement Grant from the NC Attorney General's Office, and by a grant from Johnston County.

**Neuse River Cypress Swamp,
Johnston County**



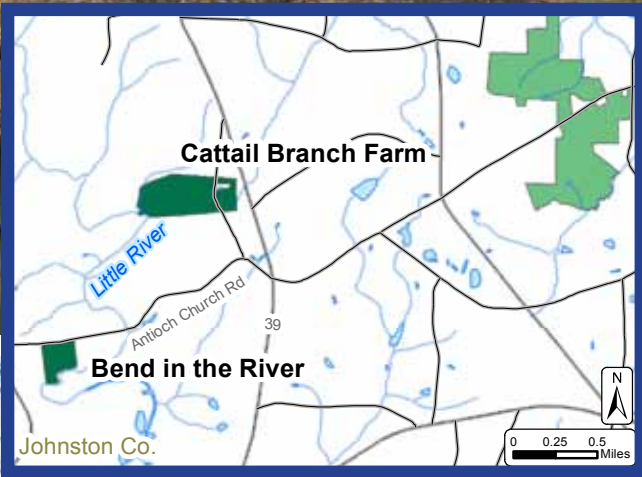
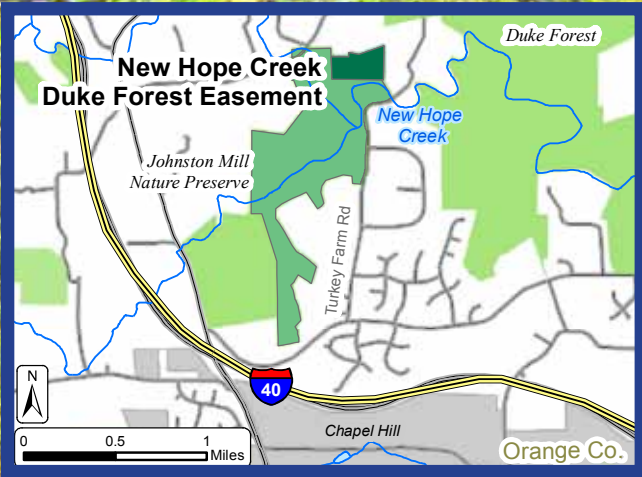
This 19-acre parcel, donated outright by First Citizens Bank, sits on the banks of the Neuse River just two miles from the heart of downtown Smithfield, in Johnston County. With 1,200 feet of river frontage, this property protects water quality and could provide a critical link for a future segment of the Mountains-To-Sea Trail, as well as a potential stop along the Neuse River paddle trail. The Neuse River Cypress Swamp property protects about 17 acres of wetlands and is home to a swampy area dotted with old growth bald cypress trees and numerous wetland plants such as broad-leaf arrowhead. The swamp provides habitat for waterfowl such as mallard and wood ducks, and the property has been a nesting site for bald eagles. Transaction costs for the donation of the property were covered by the Clean Water Management Trust Fund.

LAND CONSERVATION 2011–2012

Site	Acres	Type	County	Benefits
Bend in the River (Narron)	27	TLC easement	Johnston	Water, Food, Wildlife
Cattail Branch Farm (Narron)	82	TLC easement	Johnston	Water, Food, Wildlife
Holding Family Lands	48	TLC easement	Johnston	Water, Farm, Wildlife
Cohen Farm	102	TLC easement	Chatham	Water, Food, Wildlife, Connecting People with Nature
Steep Hill Creek Bottomlands (MacNair)	39	TLC easement	Wake	Water, Wildlife, Connecting People with Nature
New Hope Farm (Dykers Homeplace)	119	TLC easement	Chatham	Water, Food, Wildlife
New Hope Farm (Dykers Pretty Valley)	159	TLC easement	Chatham	Water, Food, Wildlife
Holding Family Lands (Woodard Farm 3)	79	TLC easement	Johnston	Water, Food, Wildlife
New Hope Creek —Duke Forest Easement (Kirkland)	23	TLC easement	Orange	Water, Wildlife, Connecting People with Nature
Robinson Forest Conservation Easement	96	TLC easement	Chatham	Water, Wildlife
Neuse River Cypress Swamp (First Citizens)	19	TLC-owned	Johnston	Water, Connecting People with Nature, Wildlife

2011–2012 acres conserved 793

Total acres conserved 15,601(as of June 30, 2012)



PRESERVING WILDLIFE HABITAT AND BIODIVERSITY

A vibrant and diverse local wildlife population is critical to the health of our region. Triangle Land Conservancy works with landowners to protect wildlife habitat to give native plants, animals, and the local ecosystem a place to thrive. In our nature preserves, TLC encourages healthy wildlife habitat, from simple stewardship practices such as removing invasive species, to more complex preservation and restoration projects that help return land to its native state and improve biodiversity.

Restoring the Past to Preserve the Future

White Pines Nature Preserve Preservation and Restoration Project

TLC's White Pines Nature Preserve is home to a regionally rare stand of white pine trees: this is the only population of white pines to grow naturally in North Carolina east of the mountains. Experts believe these white pines are a remnant of the last ice age, when this area was filled with colder climate species like spruce, hemlock and fir, as well as white pine. As the planet warmed, these species receded, except the white pines, which managed to survive in the unique area that is now in and around the White Pines Nature Preserve.

However, the white pine population is aging and showing signs of decline with increased competition from loblolly pine that was planted when the preserve was a paper plantation decades ago. In 2012, TLC launched a preservation and restoration project to plant approximately 1,900 white pine seedlings, which are derived from the existing white pines in White Pines Nature Preserve, to encourage the re-emergence of a native oak-hickory forest.



Native Piedmont Prairie Restoration

At one time our piedmont region was dotted with prairies which provided habitat for a variety of birds, animals, plants and insects. Over time, as prairies turned into fields for crops and livestock, biodiversity dwindled. At TLC's Temple Flat Rock Nature Preserve in Wake County, and Horton Grove Nature Preserve in Durham, old fields are being restored to native piedmont prairie and species are slowly returning. Through native seed plantings and a series of prescribed burns (which mimic natural wildfires that encourage seed dispersal and reduce competition from woody vegetation), TLC is bringing back wildflowers and warm season grasses such as little bluestem. With the return of these native plants both specialized insects and birds such as the bobwhite quail, eastern meadowlark and grasshopper sparrow are returning to these sites.





CONNECTING PEOPLE TO NATURE

TLC provides places for people to rejuvenate in nature and to explore our lands—through greenways, waterways, trails and nature preserves. We host hikes, community events and educational outings, and we encourage exploration through our Backyard Adventure series.

Our Nature Preserves

At the close of 2011–2012, TLC was poised to open our fifth public nature preserve: Horton Grove in Durham County. Horton Grove joins White Pines in Chatham County, Johnston Mill in Orange County, Swift Creek Bluffs in Wake County, and Flower Hill in Johnston County. All preserves offer miles of trails for exploration and recreation, are open dawn till dusk year-round, and are free of charge.

Our Outings and Events

Each year TLC hosts outings and events in our nature preserves and on other conserved properties. Many outings were designed especially for children and their parents. From moon-lit owl hikes to singles-only canoe trips down the Deep River to birding adventures, there was something for everyone.

Our Partners at TLC's J. Logan and Elinor Moore Irvin Farm and Nature Preserve

Irvin Farm and Nature Preserve, a 269-acre mix of forest and farmland in Orange County, is a living legacy of Logan Irvin, a founding board member of TLC, and his wife, Elinor. However, the J. Logan and Elinor Moore Irvin Farm and Nature Preserve not only filters water on its way to University Lake and provides a large wildlife habitat, but it also connects children and adults to nature and provides locally grown food.

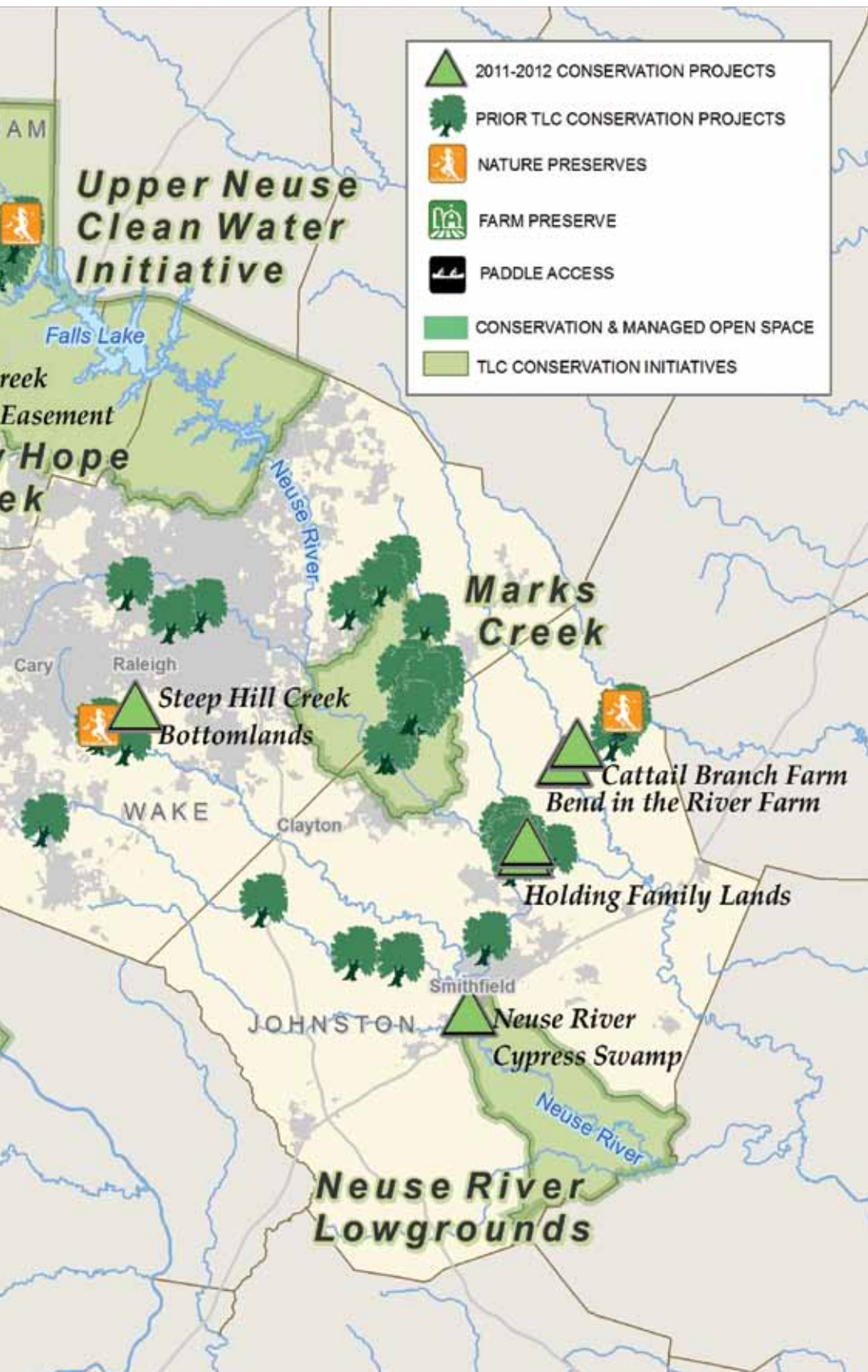
Learning Outside has hosted environmental education camps, workshops and other events at the preserve since 2009. This entirely outdoor program offers students the opportunity to interact with nature in meaningful ways and in diverse natural habitats. It also provides scholarships for children who would otherwise not have these quality experiences in nature.

Interfaith Food Shuttle uses the preserve's good agricultural soil to grow fresh food for those in our community in need of fresh healthy food. With funding from Blue Cross Blue Shield of North Carolina Foundation and the Highland Vineyards Foundation, the Healthy Choices Garden grows nutritious food for local families.

Orange County Partnership for Young Children has created a unique resource for Orange County's burgeoning Karen and Burmese refugee population. Transplanting Traditions offers garden space to these families to grow fresh food that reminds them of home.









VOLUNTEERS

Every year volunteers play a key role in fulfilling TLC's mission—from monitoring conserved land, to building trails or assisting in restoration projects. This year was no exception. If you are interested in becoming a volunteer with TLC, please see our website or email us at info@triangleland.org.

TLC Trail Crew: Volunteers assist with stewardship of TLC properties by providing many types of physical support in the field, from building kiosks to removing invasive plant species, or building and maintaining trails and cleaning up streams.

TLC Site Stewards: With 16,000 acres under conservation, TLC needs volunteer help to monitor the land. Site Stewards assist in stewardship of TLC properties by walking the trails and boundaries of our preserves, doing light maintenance during these walks, and reporting on conditions to TLC's Stewardship staff.

TLC Conservation Corps: Each week this steadfast and dedicated group helps steward and improve the physical and biological components of TLC's nature preserves by helping with trail construction and maintenance, invasive species monitoring and control, basic construction and woodworking projects, general landscaping, property and equipment maintenance, and garden construction and management.

GROUND SUPPORT: TLC Members

At our core, Triangle Land Conservancy is a local, grassroots organization. Almost 30 years ago, our founders came together to dedicate themselves to protecting open space and the natural environment in the face of a rapidly growing Triangle. Today, contributors continue this dedication to ensure the Triangle region remains a healthy and vibrant place to live and work.

In 2011–2012, your generosity helped TLC to protect almost 800 acres, even as public funding sources for conservation have become more limited. Together, we are building upon a great legacy of local conservation and charting a path for the future; a future with local waterways protected for clean drinking water, local farms that provide food for our table, and beautiful natural areas for wildlife and discovery.

Every day, your gifts to TLC advance our mission. Thank you! Without your commitment, our work would not be possible. We also encourage you to consider how you might continue that legacy with a planned gift to TLC as a member of the Heritage Society. For more information, contact our Development Office at development@triangleland.org.

TLC Stewardship Advisory Council – Formed in the summer of 2012, this volunteer group of professionals provide independent, expert advice and guidance to TLC on all matters related to the management, protection, and preservation of properties for which the Triangle Land Conservancy is responsible. Their names and positions are listed on the back page of this Annual Report.



TLC STEWARD PROGRAM

We use the word steward a lot at Triangle Land Conservancy. From being a good steward, or caretaker, of our community's natural resources to stewarding, or caring, for the land we've protected. And being mindful of how we steward, or use, donations and funding that help us carry out our mission.

So it seems fitting that our monthly giving program is called the TLC Steward program. A growing number of our 3,000 members and friends have decided to join by making a monthly credit card gift of \$10 or more. Those TLC Steward members are making an important impact on local conservation through their giving and demonstrating their commitment to TLC by providing a reliable source of monthly support.

Becoming a TLC Steward provides greater flexibility, spreading your Annual Fund gift throughout the year, and can be particularly appealing for those interested in stepping-up their financial support of TLC. We encourage you to discover more about the program by visiting our website or contacting our Development Staff at 919-908-8809, ext. 7001.

HERITAGE SOCIETY: Leaving a Conservation Legacy Through Planned Giving

The Irvin Nature Preserve is a model for what conservation can be by putting land to use in new ways—ways that create even greater community impact. But those programs and partnerships would not be possible without the generosity of longtime TLC member and friend Elinor Moore Irvin, who left that land to TLC as part of a larger gift through her estate.

Planned gifts are a wonderful way to carry on your legacy and commitment to TLC and its mission. Those who make planned gifts to TLC become members of the *Heritage Society*, which recognizes their dedication to protecting our land for future generations.

For more information or to notify TLC of planned giving provisions you have already made, please contact our Development Staff at 919-908-8809, ext. 7001.



Treasurer's Report

The ongoing economic recession made fiscal 2012 another financially challenging year for TLC. There have been many changes in how conservation is and will be funded going forward. State conservation funding continues to decrease and support from foundations has become increasingly competitive. TLC recognizes that the funding landscape has changed and has responded by implementing a long term strategy to adapt to these changes.

Fortunately, TLC's membership continues to give generously in support of our mission. Contributions from individual members represented close to 42% of our total FY12 revenue. TLC continues to show its strength programmatically with 74% of its total expenses funding program services. Despite the challenges of the past several years, TLC has managed to maintain stewardship and legal defense endowments in excess of \$1M, a testament to TLC's commitment and dedication to support its conservation activities for the long term. The Land Opportunity Fund, created by the OWOL Capital Campaign, remains strong with over \$3M available to support land and easement acquisitions.

With signs of an improving economy, we are hopeful that the most challenging years are behind us. Together with a new strategy and outreach to new allies in the community, we are refocused on safeguarding clean water, protecting wildlife habitat and local farms and connecting all Triangle residents back to nature. The Board of Directors and the Leadership Team remain committed to the long term sustainability of TLC, for our members today and in generations to come.

Michael Mankowski
Board Treasurer

Financial Report

OPERATING & PROGRAM ACTIVITY, EXCLUDING LAND TRANSACTIONS

for fiscal years ending June 30th

FY 2011 FY 2012

Individual Contributions	\$491,953	\$526,082
Workplace Giving	\$46,029	\$22,306
Foundation and Corporate Support	\$297,678	\$221,656
Governmental Support	\$303,138	\$268,060
Program Revenue	\$106,511	\$110,720
Interest Income	\$47,027	\$40,037
Income from Community Foundation	\$26,807	\$25,102
Total Operating & Program Revenue	\$1,319,143	\$1,213,963

Program Service Expense:

- Conservation Strategies	\$413,578	\$361,908
- Stewardship of Land	\$450,933	\$386,637
- Communications	\$180,018	\$191,973
Subtotal Program Service Expense	\$1,044,529	\$940,518

77%

74%

Supporting Service Expense:

- Management & General	\$145,977	\$152,339
- Fundraising & Development	\$162,320	\$179,148
- Subtotal Supporting Service Expense	\$308,297	\$331,487
Total Operating and Program Expenses	\$1,352,826	\$1,272,005
Surplus/(Deficit)	\$(33,683)	\$(58,042)

LAND CONSERVATION ACTIVITIES

FY 2011

FY 2012

Gifts of Land	\$7,821,056	\$3,407,500
Government Grants for Land & Easement Acquisition	\$2,199,812	\$1,136,648
Purchases of Conservation Land & Easements	\$1,084,166	\$1,130,500

TLC receives contributions and government support for the purchase of conservation lands and easements. This restricted revenue is not available for TLC Operations.

STEWARDSHIP AND MANAGEMENT OF OWNED

LAND AND EASEMENTS—ENDOWED FUNDS

FY 2011

FY 2012

Stewardship Funds held at Community Foundations (1)	\$572,822	\$562,626
Stewardship Endowment	\$369,758	\$441,626
Restricted for Legal Defense	\$138,825	\$160,622
	\$1,081,405	\$1,164,874

TLC's responsibility for conserved land does not end when it acquires that land. In fact, it is just beginning. TLC is responsible for stewarding and managing its land and easements to ensure their conservation values are protected in perpetuity. TLC's endowed funds provide the long-term support for the stewardship of its conservation land and easements.

ASSET, LIABILITY AND NET ASSET SUMMARY

FY 2011

FY 2012

Conservation Land and Easements	\$77,026,733	\$81,564,733
Cash and equivalents - Land Opportunity Fund	\$2,570,472	\$3,055,532
Cash and equivalents - other	\$478,287	\$274,172
Investments	\$611,190	\$614,354
Pledges Receivable	\$809,647	\$388,331
Government and Foundation Grants Receivable	\$559,138	\$328,531
Building and Equipment	\$523,662	\$511,795
Prepaid Expenses	\$39,392	\$27,321

Total Assets **\$82,618,521** **\$86,764,769**

Accounts payable and accrued liabilities **\$163,449** **\$105,251**

Total Net Assets **\$82,455,072** **\$86,659,518**

Total Liabilities and Net Assets **\$82,618,521** **\$86,764,769**

Note: The financial results shown above are derived from Triangle Land Conservancy's audited financial statements for the years ended June 30, 2012 and 2011, which contain an unqualified audit opinion. The complete audited financial statements for TLC can be obtained by contacting Chad Jemison at 919-833-3662.

(1) Funds held at community foundations are considered 'agency funds' and are not reflected on TLC's balance sheet as an asset

We are grateful to all those who give of their time and money to TLC.

The following recognizes contributions during the 2011–2012 fiscal year (July 1, 2011–June 30, 2012). This list includes River Society members who give unrestricted support at the \$1,000 and up level. Also included are those who have made gifts to restricted funds or payments to outstanding OWOL campaign pledges. We thank you for your support!

We have worked hard to ensure that names and gift levels are correct. If you find an error, or if you have any comments, please call the development office at 919-908-8809 ext. 7001, or email development@triangleland.org.

(Please note that TLC greatly appreciates those who give through workplace giving campaigns. Please let us know if you are giving this way so that we can thank you!)

Donors of Conservation Easements or Land

Esta and Murray Cohen
Duke University
Carol and John Dykers
First Citizens Bank
The Holding Family
Caroline MacNair Carl
John Narron
Kathryn and Charles Robinson

\$50,000 + (Individuals and Organizations)

Conservation Trust for North Carolina
Estate of William Joslin
NC Department of Agriculture
NC DENR - Clean Water Management Trust Fund
Warner Foundation

\$25,000–\$49,999 (Individuals and Organizations)

Anonymous
Pam and Brad Hemminger †
F.M. Kirby Foundation, Inc.
Highland Vineyard Foundation
Lee-Moore Capital Company
MacNair's Country Acres
SOUL Fund
State of North Carolina Department of Justice
Wal-Mart Foundation
Z. Smith Reynolds Foundation

\$10,000–\$24,999 (Individuals and Organizations)

Rosalind and J. Adam Abram
Marcia Angle and Mark Trustin
Aveda Institute Chapel Hill
Bertsch Family Charitable Foundation
Chatham SWCD

Esta and Murray Cohen
Carol and John Dykers
E & F Properties
EarthShare North Carolina †
Ruth and Stephen Grant
Bet and Sandy McClamroch †
NC DENR - Forest Resources Division
Anna and William Ragland
Susan and Charles Re Corr
Cathy Pascal and Ron Strom
Triangle Community Foundation †
Wells Fargo Foundation

\$5,000–\$9,999 (Individuals and Organizations)

Libby and Lee Buck
Centrex Properties
Kent Davis
Grace Jones Richardson Trust
Bobbi and Matt Hapgood
Olivia Holding
Susan Fellner and T.H. Maren
Caroline and Danny Kadis
Ruth Mary and Horst Meyer
Elliott and Lloyd Nelson
Prentice Foundation
Juliann Tenney and Bill Reppy
Kathryn and Charles Robinson
Jenny Parker and Peter Rosenberg
R. Peyton Woodson III

\$2,500 - \$4,999 (Individuals and Organizations)

Anonymous
Susan F. Beischer
Katy and Preston Brown
Mary Jane and Doug Bryant
Gail Boyarsky and Walter Fowler †
Carole and Frank Gailor
HagerSmith Design, P.A.

Wendy F. Greene-Helms and Russell Helms
Mary and Ronald Helms
Mary and Jonathan Howes †
IBM Matching Grants Program
Mary Joslin †
Carolyn Leith
Jennifer D'Arcy Maher †
Laurin Massengale
David McKay
Network for Good
Page Richardson
Kathleen and Todd Shapley-Quinn
Lisa Jones and Keith Smith
United Way of the Greater Triangle
Wells Fargo Advisors, LLC

\$1,000–\$2,499 (Individuals)

Anonymous
Ann and Lex Alexander
Kay and James Allen †
Liz Arias
Sandra and John Atkins
Sindy and Brad Barker
Marcea and Paul Barringer
Karen and Joe Bearden
Nancy Tannenbaum and John Becton
Rachel and Alec Bethune
Gloria Blythe
Mary Mac and Tom Bradshaw
Mary and Kevin Brice
Irene and Alan Briggaman
Marisa and Josh Bryant
Stacey and John Burkert
Monica Kraft and Chuck Cairns
Tracy Mancini and Norris Cotton
Stephanie Curtis and Ronald Swanstrom
Liz and Bob Dean †
Mignon and Arthur DeBerry
Bethany and Jason Dickson
Shirley Drechsel and Wayne Vaughn
Joan and Ed Eastman
Julia Elsee †
Thomas Emmel
Jennifer Feldman and Ben Landman
Kent Fiala
Gail Freeman
Jennifer and Eric Ginsburg
Ruth and Stephen Grant
Bonnie Springer and Xan Gregg
Roxanne and Owen Gwyn
Nancy and Donald Grigg
Maria Stalnaker and Robert Haith
Alycia Hassett
Stella Boswell and Craig Heiny

Ford and Richard Hibbits †
Sara Hill
Carolyn Briggs and Christopher Hitt
Jean Hodder
Stephanie Bass and Bill Holman †
Alice and George Horton
Gladys Otten Fussler and Herman Howe
Hannelore and Konrad Jarausch
Alison Hill and Tandy Jones
Nell Joslin
Claudia and Bobby Kadis
Margaret and Tom Keller
Betsy and Bryan Kemper
Thomas S. Kenan, III
Nannerl and Robert Keohane
Tom Krakauer †
Cathy and Randy Lambe †
Ayden R. Lee, Jr.
Betsy and Steve Levitas
Caroline and Paul Lindsay
Anne Loeb
Sarah Logan
Skip and Lisa London
Jean and Michael Mankowski
Cathy Murphy and John Manuel †
Harriet and D.G. Martin
Alexander Massengale
Betty and Jeff Masten
Susan and Robert McClanahan †
Barbara McFayden
Janis McFarland and Rich McLaughlin
Stephanie and John Mitchell
Chuck and Laura Neely
Chris and Bob Nutter
Tess and William O'Brien, Jr. †
Regina and Ted Oliver
Alex Moore and Dean Painter
Peg Parker †
Carolyn and Wade Penny †
Joel Mattox and Karen Perizzolo
Peter and Ona Pickens
Ms. Jane B. Preyer
Betsy and John Pringle
Beatrice and Leonard Prosnitz
Linda Raftery and Phil Spiro
Kathleen Baker and Jesper Rasmussen
Gail and John Ray
Susan Reimer †
Lynn Richardson †
Thomas Roberts
Laura and Matthew Roe
Andrea Rohrbacher †
Elizabeth and David Rooks
Lori and Tim Rowe
Erika Samoff and Todd Ochoa
Cece and Peter Scott
Barbara and Jonathan Sheline

Eve and Sherwood Smith
 Pam Troutman and James
 Smith †
 Judith Snyderman
 Joyce and Fred Sparling †
 Cindy Spuria
 Sylvia and Don Stanat †
 Kari Hamel and Richard Stanford
 Francine and Don Stephenson †
 Anne Stoddard and Ron Gal-
 lagher
 Anne and Fred Stratton
 Walter Stults
 Annie and Patrick Sullivan
 Lisa Davenport and John W.
 Terborgh †
 Nancy and Larry Tombaugh
 Betty Twiggs
 Margaret and Dean Urban
 Eleanor and Simon Warner
 Laura and Drayton Virkler
 Jennifer and Brian Vosburgh
 Nancy and Monty White †
 Ashley and John Wilson
 Cynthia Shimer and Eric Wiebe

\$1,000–\$2,499 (Organizations)

Anonymous
 Adele and Willard Gidwitz Family
 Foundation

Ann C. & C. Hamilton Sloan
 Foundation
 Aqua Pennsylvania, Inc.
 Aveda Corporation
 Four Oaks Bank & Trust Co.
 GlaxoSmithKline Matching Gift
 Program
 IBM Matching Grants Program
 In Situ Studio
 Lip Service Contemporary
 Catering
 Manning, Fulton and Skinner,
 P.A.
 NC DENR - Land Resources
 Division
 Renaissance Charitable Founda-
 tion, Inc.
 S & C Harvest Foundation, Inc.
 Schwab Charitable Fund
 Town of Carrboro
 Toyota 100 Cars for Good

\$500–\$999 (Individuals)

Anonymous
 Ann and Dev Anderson
 Ellen and Thomas Bacon
 Wendy Banning
 Natalie and Stacy Barbour †
 Tony Blanford
 Phil Blank

Cara Stackpoole and Gordon Bolt
 Leigh and William Bordley
 Marilyn and John Brantley
 Norman Budnitz
 Lisa and James Burke
 Christina and Jason Burke
 Peter Calingaert
 John Clamp †
 Jean and Art Cooper
 Marla Dorrel and Gary Craven
 Maia and Mark Derewicz
 Nancy and William Dille
 Jean Spooner and Robert Fisher
 Dana Folley
 Ashley Frost
 Lallie and David Godschalk †
 Karen and Charles Goss
 Marie and Samuel Hammond
 Eric Hawkins †
 Virginia Hester
 Irwin Holmes
 Jefferson Holt
 Nancy and Sig Hutchinson
 Barbara Harvey and Keith Jensen
 Betty Kenan
 Margaret Leigh
 Dell Little
 Julia and Robert Mackintosh
 April McGregor
 Dexter Morris
 Amy and Peter Mucha
 Chris and Mitch Mumma
 Joelle Permutt and Christopher
 Mumford
 Robin Jennings and William
 Mundt
 Sally Gewalt and John Petranka
 Lisa Carmichael and John
 Preisser
 Heather and Bryan Rainville
 Harriett and Geoff Sayre-McCord
 Pat and Don Scott
 Lia Smith and Joseph Franek
 David Stephan
 Karen Sullivan
 Carolyn Van Sant
 Sarah and Ben Vierra
 Jeanine and Steve Voller
 Ken Walsh
 Anna Ho and Bob Whalen
 Rosalyn and Kenneth Winter

\$500–\$999 (Organizations)

Great Outdoor Provision Co. †
 Just Give
 Lockridge Community As-
 sociation
 The Stoddard Group
 Unitarian Universalist Fellowship
 of Raleigh

\$250–\$499 (Individuals)

Anonymous
 Greg Abashian



Blanche and Zack Bacon
 Luanne and Eric Bannan
 Ashley Barnes
 Rachel Beck
 Nellie Hansen and Ron Benson
 Chris and Bob Berndt †
 William and Dorothy Bevan
 Shirley Billings
 Donna and John Blackmer
 Anne Blackshaw and Timothy
 McKee
 Patricia and William Blau
 Kathleen Bottomley
 Liessa and Russell Bowen
 Susan Bowers
 Blair Bowers
 Rose and Saul Boyarsky
 Gail and Tommy Bridges †
 Eleanor and Bob Broadus
 Millie Brobston and Ronald
 Garcia
 Patricia Brown
 Shannon Bueker
 Pamela and William Camp
 David Connelly †
 Carolyn and Robert Connor
 Jennifer and Doug Daniels
 Gail and Amos Dawson †
 Mary Dawson †
 Deborah DeMott
 Elizabeth and Juan Garcia
 Dominguez
 Pamela Dominick
 Amy Elinoff
 Susan Lamb and Kent Fawcett
 Howard Fitts
 Susan Fowler and Lawrence
 Smith
 William Freund
 Angie Frizzell



† Denotes first gift to TLC was made at least 20 years ago.

Alexa and Peter Gerend
 Stacy and Jeff Glass
 Theresa and Luke Graysmith
 Lynn Heinrichs and Jan Grossman
 Carol Gunther-Mohr and Robert Markunas
 Elizabeth Harris
 Robert Harris
 Sherry Hrynnewych
 Holli Kearns
 Barbara and Don Kennedy
 Ellen Cassilly and Frank Konhaus
 Suzanne and Gary Krill
 Carol Lassiter
 Katherine and Sam Leaman
 Matthew Lee
 Diane and Eugene Linfors
 Elizabeth Wintermute and John Little
 Gisele Long
 Lu Lu
 Livy and Dick Ludington
 Erik Mazzone

Chrissy Pearson
 Diane and Jeffrey Pettus
 Charlotte and John Presley †
 Lisa and David Price
 Nancy and Allen Proia
 Betty Rapp †
 Jeannine and Mitchel Reese
 Patti Reindle
 Surrinda and Michael Roberson
 Tara and Peter Rubinas
 Pearl and John Salmeron
 Catherine Bollinger and Thomas Scheitllin
 Sarah and Jon Scott
 Monica and Richard Segovia-Welsh
 Nellie Shipley
 Katharine and John Silvasi
 Forrest Smith
 Liz and John Snyder
 Cynthia and Steve Sollod †
 Mark Soticheck
 Jo-Anna and Thomas Spector †

Jana and Kirk Wagenseller
 Robin Wagoner
 Kate Scholberg and Christopher Walter
 Nellie Waltner †
 Susan and Randall Ward
 Deborah Dean and Tom Wenger
 Elizabeth Wildsmith and Samuel Field
 Margaret Stetson and Bruce Wilks
 Betty Williamson
 Maria Rita Villari and Anthony Wrobel
 Rosemary and Smedes York †

\$250–\$499 (Organizations)

Alphin Design Build
 Kitchen Media, Inc.
 Orange County Environment & Resource Conservation
 Progress Energy †
 Teagle Foundation Matching Gift Program
 Town of Chapel Hill

\$1–\$249 (Individuals)

Anonymous
 Joanne Abel and Rama Mills †
 Lucy Adams
 Lyle Addley-Warrick
 Jeff Adolphsen
 Howard Adriance
 Mary and Robert Ahlert
 Margaret and T.R. Ainsley
 Robert Ajax
 Virginia Aldige
 Melanie Allen
 Ethelene Allen †
 Kelly Allen
 Jaymi and Jason Allen
 Susan and Howard Allen
 Jane Almon
 George Altschuller
 Kent and William Alves
 Emily Ander
 Libby Webb and Gary Ander
 Leigha Anderson
 Nancy Easterling and Charles Anderson
 Elizabeth Anderson †
 Hannah and Richard Andrews
 Sara and Ross Andrews
 Norma Harrell and Thomas Andrews
 Joy Lewis and Fred Annand
 Don Anthony
 Robert Anthony
 Lottie Applewhite
 Sylvia and Edward Arnett
 Karen Ashbury
 Sissy and Charles Ashby
 Laura Heyneman and Owen Astrachan

Kathryn and George Auman
 Barbara and Jim Avery †
 Arthur Axelbank
 Katherine Baer
 Miriam Baer
 Martha Baird †
 Sara and Helmy Baligh
 Lois Ballen
 Ruth and Anthony Baragona
 Cissy McKissick and David Barber
 Shannon St. John and Leo Barber
 Martha and John Barefoot
 Laura Morss-Barnett and Andrew Barnett
 Christine and William Barnett
 Elaine and Bill Barney
 Jane Barringer †
 Katy and Tucker Bartlett
 Nancy Bartlett and Paul Bartlett
 Joanne Barton
 Judith and Allen Barton
 Maryann and Charles Bassett
 Dale Batchelor and John Thomas
 Tonya Whitley-Beam and Drew Beam
 Keith Beamon †
 Charles Bean
 Susan Beaty
 Leandra Bedini
 Sue and Bob Behringer
 Judy Whisnant and John Bell
 Laura and William Benedict
 Sylvia Bennett
 Katherine and Kenneth Berger
 Lisa and Bob Berger
 Nina Verin and Mark Berman
 Julia and William Berry
 Scott Besthorn
 Dolores Bilangi
 Caelia Bingham and Andrew Bingham
 Linda and David Birnbaum
 Bridget Bishop and Walt Cardwell
 Bernard and Charles Blanchard †
 Molly and David Bland †
 DonAnne and Ron Blankenship
 Holly and Bill Blanton
 Patricia Blanton and Bob McConaughy
 Elizabeth Blue
 Ruth and Jacob Blum
 John Blythe
 Rebecca and John Board
 Agna Boass
 Susan and John Bobinyec †
 Jeanne and Brian Boehlecke †
 Jean and Bill Bohs
 Ruth Leight and Charlie Bolton †
 Audrey Booth †
 Elizabeth and Martin Borden
 Rita and James Borden
 Sorry and Henry Bowers
 Glenn Bowles



Melissa McCullough
 Janine and John McGee
 April and Marcus McGinnis
 R.R. McGough
 Julia and Michael McVaugh
 Charlotte Mitchell
 Julie Moore †
 Maria and Joseph Morrone
 Meredith Moseley
 Bill Mullen
 Margaret Newbold
 Catherine Starkweather and Dan Oldman †
 Karri and Edward Olefirowicz
 Susan Olive
 Cynthia Payne

Jenna Staples
 Maxine and Alan Stern †
 Carolyn and Shaler Stidham
 Paul Stout
 Krista Bremer and Ismail Suayah
 Paul Sun †
 Joe Tarlton
 Dale Threatt-Taylor and Barrington Taylor
 Elizabeth and Trevor Thompson
 Tammy and James Triglanos
 Katherine Turlington
 Sara and Robert Twiss
 Charlie Van der Horst
 Jean and Marius Van Zyl
 Lee and Bruce Vrana

B.J. and Bill Boyarsky †
 Kathy and Allen Boyer †
 Rachel Bradshaw
 Anne Margaret and Richard
 Braham †
 Beverly Branaman
 Jo Ellen Brandmeyer
 Yvonne Brannon and William
 Clifford
 Patti and Bill Brideson †
 George Brine
 Jane Brinkley
 Beth and Stephen Brissette
 Natalie Britt
 Ruth Bromer
 David Brooks
 Elizabeth Broome
 James Brosnan
 Margaret Brown
 Regan and Robert Brown
 Carol and Talmage Brown
 Louise and Charles Bryan
 Jennifer and Joe Bryan
 Tom Bryan
 Sarah Goddin and Scott Bryan †
 Jill and Al Bryant
 Kathie and Ed Bryson
 Kori Flower and Thomas Bucheit
 Barbara Buckley and Scott
 Randell
 Jean Buckwalter †
 Charles Bugg
 Bronson Bullock
 Kathy and Gary Bulman
 Earline and Phil Bunn
 Patricia and David Burgess
 Kelly and David Burkhardt
 William Burlingame
 Celeste Burns and Alexander
 Johnson
 Joan and Maurice Bursey
 Harry Cable
 Stephanie Cain
 Claude Caldwell
 Lee Calhoun
 George Callaway
 Janet and Don Campbell
 Janet Campbell †
 Beth Jukes and Janet Campbell
 Priscilla Canady
 Marjorie and Richard Cannity †
 Lydia Wegman and Robert
 Cantwell
 Diana and Michael Caplow
 Angelo Capparella
 Linda and Philip Carl
 Leslie Ratliff and Johnathan Carr
 Susan and Thomas Carson
 Thomas Carson
 Ann and Derb Carter
 Susan and Charles Carter
 Becky Carver
 Claire and Henry Castner
 Ayer Chamberlin



Betty Chaika-Hawkins †
 Marianna and Lloyd Chambless †
 Margaret and Stephen Chandler
 Eliska Chanlett †
 Barbara and John Chapman
 Julie Chappell
 Linda Chappell
 Jean and Arthur Chard †
 Lani Frazier and Michael Chaves
 Nancy and Neal Cheek †
 John Cheesborough
 Dorothy Chin
 Ellica Church
 Ruth Clark
 Mike Gantt and Alan Clark †
 Kathryn and Chris Clarke
 Martha Ann Keels and Dennis
 Clements
 Laura Wenzel and Jeffrey Cobb
 Charles Coble
 Jane Kendall and Ran Coble †
 Margaret and Jeffrey Cohen
 Ellen and David Cohen
 William Colebrook
 Jen Colletti
 Sheila Collins
 Shirley and Ivor Collins
 Francesca and Rudolf Colloredo-
 Mansfield
 Judith Kramer and Lloyd
 Comstock
 Roberta and E.G. Cone
 Christy and David Connell
 Mary Beth Tobin and John
 Connors †
 Rebecca Cook
 Elaine and John Cooke †
 Jacob Cooley
 Linda Cooper
 Jean and B.J. Copeland
 Sue and Rick Copland
 Nancy Cormany
 Paula Cothren
 Laura and John Cotterman
 Kathryn Coulter
 Jessica and Jeff Coutu †

Cathy and Ray Covington
 Heather and Burton Craigie
 Lisa Creasman
 Carmen and Charles Creech †
 Laurie Dunn and Crawford
 Crenshaw †
 Linda and Earl Creutzburg
 Asta Crowe †
 Jennifer and Bill Cure
 Gail Curry
 Betsey Granada and Elisabeth
 Curtis
 Rufus Dalton †
 Rebecca Dameron
 M. Joanne and James Damon
 Judy Morgan-Davis and Robert
 Davis
 Amy and Matt Dean
 Judith Dearlove
 Barbara and Allen Dearry
 Carol Hogue and Gordon
 DeFries
 Laurel Degernes
 Ann and Robert DeMaine †
 Kathleen Yasui-Der and Chan-
 ning Der
 Anne and Jeff Derby
 Susan Deter
 Monica Diakidis-Wright
 Marion and Howard Diamond
 William Dickerson
 Laura and Michael Dickinson
 Patricia Dickinson
 Barbara Dickinson
 Ann and Francis DiGiano
 Nina Frankel and David Guiseppe
 Emmanuel Diliberto
 Leslie Dillon
 Kate Dixon and Dan Wilkinson †
 Nina and Arthur Dodd †
 Vivian and Michael Doelling †
 Alberta Dolan
 Scott and Barbara Dolittle
 John Dorney
 Anna Lee Dorsett
 Siv and Ted Dossett

Kathy and Graham Douglass
 Daryl Walker and William Dow
 Nancy Daukas and Eric Downing
 Ann and Max Drake
 Sylvia Becker-Dreps and Chris
 Dreps
 Sunita and Bastiaan Driehuys
 Tracey Dryden
 Melanie and Michael Dubs
 Kathleen Duval
 Elise Eads †
 Ralph Earle
 Renee Gledhill-Earlley and Larry
 Earley †
 Sally Earnest
 Jean and John Earnhardt
 Lindsay Easley
 Muriel Easterling †
 David Eck
 Marjorie Eckels †
 Fred Edie
 Jennifer Edmonds
 Gayle and William Edwards
 Margaret and Robert Ehle †
 Marcia Eickmeier and Larry
 Watkins †
 Sue Eldon
 Charlotte and Thomas Elleman †
 Nora and Steven Esthimer
 Susan and Allan Eure
 Jane Evans
 Laura and Vann Evans
 Gary Evans
 Audrey Evarts
 Mary Lou Eycke †
 Nina and Bill Falconer †
 Roberta Weinberg and Alan
 Fanning
 Margaret and Pierre Farmer
 Margaret Fegers
 John Fein
 Steven Feingold
 Mary Boat and Paul Feldblum
 Susan Fields
 Renee Fink
 Paul Finkel

† Denotes first gift to TLC was made at least 20 years ago.



Diane and Nelson Henderson
 Nancy Scott and David Henderson
 Kala Herlands
 Karin and George Hess
 Nancy and Joe Hewitt
 Teresa Hice
 Carol Hinnant
 Jan and Robert Hinson
 Loren Hintz
 Joan and Richard Hiskey †
 Margaret and Richard Hodel †
 John Hodges-Copple
 Robert Hodgins
 Dongmei and Ronald Hodgson
 Jan and Jim Holland
 Deborah and David Holland †
 Irving Holley
 Meredythe Holmes
 Tyler Holmes
 Charlotte and Andrew Holton
 Sylvia and Abraham Holtzman †
 Mary and Aaron Honeycutt
 Jane Hoppin
 Penelope and William Hornsby †
 Barry Howard
 Sara Miller and David Howell
 Ann and W. Dennis Howells
 Stephen Hren
 David Lindquist and Paul Hrusovsky
 Sylvia and Paul Hubbard
 Cornelia and Isham Hudson
 Pamela and Richard Huelsman
 Pam and Tom Huff
 Barbara and Bob Hughes
 Scott Hughes
 Mary Hulett
 Mary Kay McDonald and Timothy Hull
 Kathy Hundley †
 Jane and James Hunt †
 Neal Hunt
 J. Wilson Hunter
 Margretta and Shepard Hurwitz
 Katherine Hyland
 Susan and Fred Irons
 Alicia Jackson
 David and Lael Jackson
 George Jackson †
 Sally and Robert Jackson

Sandra Fisk
 Elaine and Graham Fitzsimons
 Anne and William Flash
 Ellen and Robert Fleming
 William Flournoy
 Spence Foscue
 Isabel and George Fowler
 Daniele Armaleo and Laurie Fox
 Harriette and Larry Frank
 John Franklin
 Mary Frazer
 Diane Frazier
 Janet and Karl Freburger
 Tobin Freid and Scott Schwartz
 Barker and Cavett French
 Patricia and William Frey
 Ida Friday
 Jean and Daniel Fucella
 Joyce Gad †
 Lena Gallitano
 Jeanette and George Gann †
 Rhonda and Lyle Gardner
 Betty Garland
 Isa Cheren and William Garlick
 Virginia Garrett
 Alfred Graham Gash
 Elinor and William George
 Sandra Metz and Amy Germuth
 John Gerwin
 Nancy and Jack Gibson
 Carol and Nicholas Gilham
 Martha and Roy Girolami †
 Honre and Hillel Gitelman †
 Florry and Richard Glasser
 Jane and Geoffrey Gledhill †
 Carol and Lowell Goldsmith
 Beth Goldston and Michael Barnes
 Jimmy Goldston
 Nancy and Craufurd Goodwin
 Nancy and Roger Gorham
 Chris and Dave Gospodarek

Karl Gottschalk
 Patsy Grainger
 Emily and Bob Grant
 Judith and Lester Grant
 Uli Gratzl and Doug Little
 Jeri Gray
 Laurie Heise and John Graybeal
 Margaret Greer
 Nansi and George Gregor-Holt †
 Janice and John Gregg †
 Edward Gregory
 Marcella and Paul Grendler
 Karin and David Griffiths
 Lynn Mindel and Roger Gris-som †
 Marilyn Grolitzer and William Dupont
 Sallie and Gordon Grubb
 Linda Convisser and Bruce Guild †
 Charlotte Nelson and Wib Gulley
 Gregory Gupton
 Nancy and Norm Gustaveson †
 Elise and William Guthridge
 Nancy Guthrie
 Racquel and Daniel Guy
 Linda Guzynski
 Pauline Gwin
 Pam Timmons and Perry Haaland †
 Betsy and Joe Hackney
 Susan and Thomas Hadley
 Liza and Mike Hager
 Robinette Hahn
 Virginia and Conrad Hall
 Dolores Hall
 Henry Hall
 Maidd Hall †
 Martha Hamilton
 Leigh Ann and and Scott Hammerbacher

Azot Derecho and Bradley Hammill
 Joan and Alex Harding
 Ernestine and Merel Harmel †
 Sheryl and William Harmon
 Jackie Harper
 Edward Harris
 Peggy and Robert Harris †
 Leonne and Bob Harris
 Pat Carstensen and Ed Harrison †
 Katherine Harrison
 Gayle Hartis
 Patricia and John Hartwell †
 Eleanor and Bill Hasse
 Eleanor Hawkins
 Lark Hayes
 Bobb Head
 Kerry Hazen
 Mary Humphrey and Mark Healy
 Kay Edgar and Robert Healy †
 Jennifer Leigh Crouse Heartway
 and Perrin Hammond
 Heartway
 Margaret Heath
 Betty Sanders and Milton Heath
 Berl Heffner
 Gordon Whitaker and Bob Hellwig †
 Margaret Helton and Terry Noah



Robin and Barry Jacobs
 Wendy Jacobs and Michael Meredith
 Steph and Andrew Jeffries
 Maria Hitt and David Jenkins
 Penelope and Eric Jensen †
 Heather and David Jester
 Maureen Johnson
 Lauren Johnson
 Susan Chen and Alan Johnson †
 Mary Roberson and Mark Johnson
 Cindy and Ron Johnson
 Ellen and Charles Johnson †
 Sally and Alan Johnston
 Micheal Jokinen
 David Jones
 Mary and James Jones
 William Jones †
 L. Merritt Jones
 Kathy Gest and Mel Jones
 Rodney Jones
 Van Jones
 Marcia and W. Burns Jones
 Irene and Robert Jordan
 Melanie and Scott Joy
 Annette Jurgelski
 Bree Kalb †
 Marti Kane
 Mary and Raymond Karnes
 Michele Karwoski
 Marian and David Katzin
 Charles Keith †
 Amy Kellum
 Ellen and Jim Kelly
 Karen Long and Arlon Kemple
 Caroline Sikorsky and Ann Kendall
 June and Mark Kennedy †
 John Kent †
 Carol Rae and John Kepler
 Sheila Kerrigan and Steve Clarke
 Kathleen Kidd †
 Charles Kidder
 Neal Kightlinger
 Lynn Wilson and Paul Killough †
 Carol Kirkland and Lee Mortenson
 Rosa and Larkin Kirkman †
 Amy and Todd Klaenhammer †
 Ruth and Edmund Klemmer
 Mary Ann Chap and Nancy Knepekens
 Mark Knelson
 Gene Knight
 Barbara and William Koch
 Patricia Kohler
 Valerie Komives
 Jane and Phil Korest †
 Peggy and Chuck Korte
 Jenny Kotora-Lynch
 Deborah Kozlowski and David Lindbo
 Sue and Tom Kres

Steve Kroeger †
 Hans Krusa
 Jutta Kuenzler †
 Christina Kunick
 Elizabeth Moore and Rick Kunst †
 Kelly and David Kurz
 Ralph LaForge
 Linda and Thomas Lahre †
 Edward LaMay
 Faye and Ross Lampe
 Amelia and Richard Lane
 John Lang †
 Kathleen Langfield
 Paula and Dennis LaPoint
 Nancy and Timothy LaPointe
 Anne Minnotte and Tyre Lasitter †
 Susan and Wingate Lassiter †
 Robert Lathlaen
 Charles Latimer †
 Samuel Laurie
 Lydia Lavelle
 Brent Lawrence
 Elizabeth and Joseph Lawrence
 Beth and Lewis Lawrence
 Suzy Lawrence
 Joan Learner
 Maria Lee
 Edwin Lee
 Harry LeGrand †
 Mary and Thomas Lehman
 Nancy and Phil Leinbach
 Diane Lennox
 Janie and Bruce Leonard †
 Risa Hiller and Ed Levin †
 Sondra Panico and Stuart Levin
 Liz and Ron Levine
 Diana and Stanley Levy †
 Nerys Levy
 Rachel and David Lewis
 Amy Lewis
 Marie and Ralph Liebelt
 Cindy Lincoln
 Marjorie and Quentin Lindsey
 Elsa Liner
 Lewis Lipsitz
 Meghan Lobsinger
 Nicole and Guy Loeffler
 Stephanie London and Matthew Longnecker
 Elaine and Randall Love
 Bonny Moellenbrock and Michael Lowry †
 Melissa and Josh Lozoff
 Nancy and Renee Luberoff
 Caroline Luckett
 Carol Gallione and Paul Luebke
 Gerry and Jim Luginbuhl
 Victoria Kapreilian and Jonathan Luis
 Anne and Chris Lutes
 Sherry and Brooks Lutterloh
 Rebecca Mabe
 Ann and Ray Mack

Julia Mack
 Amy Mackintosh and Tom Kagan †
 Alan Magid
 Lynn Maguire and Alec Himwich †
 Michele and Brad Makrucki
 Claudia Mangel
 Peggy and Walter Mangler
 Diane and Phillip Manning
 Melinda Marcus
 Mary Markert
 Zerneena Marshall
 Judy Martell
 Nancy and Barclay Martin †
 Betty and Dave Martin
 Margaret and Wayne Martin
 Mary Martorella
 Brooke Triplett and Phil Massaro
 Linda and Clifford Mather
 Susan and Bill Mattern
 Albert Maxwell
 Elizabeth and James Maxwell
 Rebecca and Nicholas Mayhew
 Glenna Maynus
 Susan Mazzara
 Elizabeth McArthur
 John McBrayer
 Margaret and Richard McCann †
 Darlynn McCarter and Russell Kozerski
 Debbie and David McCarthy †

Camille and Alexander McGeachy
 John McGowan
 Richardson McKelvie
 Claude McKinney
 Margaret and Ross McKinney
 Sharon Day and Joanie McLean
 Kathryn and Michael McMahon
 Aubrey McManus
 Kim and Steve McNeary
 Mary Louise Welby and Robert McNeil †
 Margaret McPherson †
 Scott McRae †
 Ellen McRae †
 Julie McVay
 Ruth and Jim Mead †
 Melinda Meade †
 Anne McLaurin and Charles Meeker
 Kathryn Moss and Robert Merriam †
 Ann and Eugen Merzbacher †
 Mary and Paul Meyer
 Adam Meyer
 Marian and Anthony Meyer
 Sandra and Tom Meyer
 Gwen Murphy and Lloyd Michener
 Catherine and Carlton Midyette †
 Sally Migliore and Andrew Meyer



Julie McClintock
 Judy and Dan McConnell
 Langley Thomson and Roger McDorman
 Theo McCormick
 Patti and Jerry McCrain †
 Claire McCullough †
 Jeannette and William McCullough
 Linda and Thomas McCurdy †
 Jean and Cary McDonald
 Vangie Foshee and William McDonnell †
 Kay McGaw

Charles Millard †
 Brent Miller
 Sylvia and Robert Miller
 Theresa and George Miller
 Beverly Miller
 Jean Gross and Donald Miller
 Barbara and Charles Milone
 Dorothy and Kent Miner †
 Elizabeth and Jason Misner
 Paul Mobus †
 Kathleen Mohar
 Nelda and James Mold
 Joan and Gustavo Montana
 Sally and Rhett Moody

† Denotes first gift to TLC was made at least 20 years ago.

Linda Sanders and Matthew Moore
 Victoria and Richard Moore
 Elizabeth Moore
 Susan Moore
 Michelle and Chris Moorman
 Kathryn and Rua Mordecai
 Karen Hassett and Keith Morgan †
 Jack Morisey
 Becky and T.C. Morphis
 Ann Chamberlin and Charles Morrison
 Pamela Morse
 Beverly and David Moser †
 Ann and Alexander Motten
 Nell and Fred Mowry †
 Mary Mudd
 Beverly and Bob Murdock
 Judy Murray
 Susan Myers
 Michele Myers
 Sarah Myers
 Mary and David Neal
 Leann Nelson
 Bonnie Nevel and Richard Newell
 Norbert Nevid †
 George Newton
 Marilyn Butler and Rob Nichols
 Margot and Larry Nicholson
 Sheila and Bruce Nicklas
 Anna and Ben Niemetz †
 Karen Kluttz and Charles Nintzel
 Elaine and G. Joseph Norwood
 Denise and Peter Nowak
 Sara Oggel
 Mary Norris and Patrick Oglesby
 Martha and Charles Oldham
 Eve and B.B. Olive †
 MaryEllen and Michael Olson
 Katherine O'Malley
 Helen Drivas and Thomas O'Neal †
 Peggy O'Neil-Ross
 Connie and Richard Orander †
 Alison and James O'Reilly
 Oliver Orr
 Patricia Lester and Jerry Oster
 Beth Owen
 Richards Owens
 Janet and Charles Paddock
 Rusty Painter
 Janice Palmer
 Kathleen and Gary Palmer
 Nan Pardington
 Jean Parish
 Samantha and Nicholas Parker
 Mary Parker †
 Carolyn Parker
 Phyllis and Knowles Parker
 Carol and Charles Parron †
 Adaline and Ernest Pasour
 Virginia Pasour
 Pamela and James Pate

Mary Pate
 Patricia and Michael Patetta
 Jill and John Paul
 Julie and Paul Mack
 Beth and Greg Payne
 Linda and Sam Pearsall
 Brenda Pearson
 Lucia Peel
 Carolyn and Stanley Peele †

Paul Popish
 Debbie Powell †
 Suzanne and Bill Powers
 Diane and Mark Pozefsky
 Arthur Prange †
 Donna Prather
 Cheryl and Jefferson Prather
 Trevor Presler
 Martin Presler-Marshall

Warren Resley
 Victor Rhodes
 Sue and Richard Richardson †
 Ann and Edward Rick
 Catherine and William Rideout
 Lisa Riegel
 Catherine Riggs †
 Linda and Alan Rimer
 Ann Ringland
 Lisa and Carl Rist
 Carol and Karsten Rist
 Jeanne Robbins
 Ruth and Russell Roberson
 Marcia and Ednace Roberts
 Brande Roberts
 Sara Robertson and John Blanton
 Eliza and Dav Robertson*
 Diana and Heman Robinson
 Nancy Robinson
 Irene Rockwell
 Charlotte Jones-Roe and Charles Roe
 Richard Rogers
 Kathy Roggenkamp
 Sally Rohrdanz
 Gloria and Jim Rolls
 Cherie Rosemond and David Woodmansee
 Mitch Rosen
 Theresa Rosenberg †
 Mary Anne and Julian Rosenman
 Cynthia and Alexander Ross †
 Mary Ross
 Virginia and Russell Rowlett †
 Thomas Ruckdeschel
 Alison Roxby and Brian Rulifson
 Nancy Dole and John Runkle †
 Stephanie and Peter Ruzsa †
 Hildegard Ryals †
 Nancy and Hal Safritz
 Sherry Salyer
 Larry Sams
 Greg Sanchez
 Dale and Robert Sandler
 Molly and Timothy Sanford
 Sarah Sasser †
 Harriet Sato
 Debra and Ricky Savage
 Martha and Alexander Sawtschenko
 Anne Sayers
 Anne Scaff
 Jane Ellen Simmons and Roel Schaaper
 Susan Lupton and Robert Schall
 Kathleen Scharl
 Elizabeth Scherrer
 Lao Rupert and Steve Schewel
 Carol Schlim
 Karamarie Fecho and Charles Schmitt
 Karen and Reto Schneider
 Chad Schoen



Robert Peet †
 Carol Ann McCormick and Mark Peifer †
 Carol Pekar
 Bernadette Pelissier and Vann Bennett
 Nancy and Peter Perrault
 Barbara and Robert Perez
 Karl Peterson
 Jan Diamond and Todd Peterson
 Judith and David Peterson †
 Larry Petrovick
 Doug Pfizenmaier
 Jean and Robert Phay †
 Jean and Dick Phillips
 Judith and John Philpot
 Judy and James Pick
 Fair and David Pickel
 Bepi Pinner
 Betty Pipes
 Marilyn and Stephen Pizer
 Carolyn Plummer
 Stephen Pomeroy
 J. Gregory Poole III

Andrew Preston
 Nancy and Edwin Preston †
 Harriet and William Procter †
 Elizabeth and James Pullman
 Lori and Bobby Purcell
 Susan and Bob Purdy
 Merry and Robert Rabb †
 Trish and Lee Rafalow
 Wes and Trent Ragland
 Adora and George Ragsdale
 Colin Ramage
 Susan and Vikram Rao
 Bryna and Greg Rapp
 Caroline Ray
 Sherry Essig and Warren Raybould
 Karen Reed
 Karla Reed
 Roberta and Morgan Reed
 Peg and Phillip Rees
 Susan Regier
 Margie Reid
 Margaret O'Shaughnessy and Edmund Reiss

† Denotes first gift to TLC was made at least 20 years ago.

Elley Scholper
 Brenda Berlin and Kevin
 Schulman
 Iris Schwitzer
 Anne Geer and David Scott
 Ellen Scouten †
 Georgiana and Richard Searles
 Libby and Larry Searles-Bohs †
 Kathy and Sandy Seaton †
 Margaret and Matthew Segal
 Ann Matrone and Alan Seiferheld
 Philip Semanchuk
 Nancy Miller-Serozi and Mike
 Serozi
 Joshua Setzer
 Anne Smith and Woody Seymour
 Pearl and Robert Seymour
 Maria and John Shain
 Barbara Shaw †
 John Shaw †
 Holly Reid and Richard Shaw
 Francine Durso and Ted Shear †
 Kirk Shearin
 Marywinne Sherwood
 Susan Short
 Emilie and Carl Sigel
 Susan Silva
 Kevin Silva
 Stephanie Simon and Chuck
 Solomon
 Michael Singer
 Eva and Claude Sitton †
 Jill Skidmore
 Sara Skinner
 Martha Sledge
 Miriam and Lawrence Slifkin †
 Anne Slifkin and Mike Freemark

Naomi Slifkin
 Julie and Chris Slocum
 Susie and Milton Small †
 Clyde Smith †
 Charlotte and Scott Smith
 Edna and Earl Smith
 Wendy and Gilbert Smith
 Gretchen Smith
 Mark Smith
 Chris Snow
 Delilah and David Snow
 Phyllis and Lee Sockwell
 Sue-Ann Solem
 Julie Eastman and Mike Sollins
 Eileen and Jeffrey Soo
 Robert Sowa
 Marilyn and Joseph Sparling
 Ann Sparrow
 Pat and Bob Spearman †
 Brant Sprunger
 Dirk Spruyt
 Catherine and Thomas Stabler
 Jackie Staeheli
 Allison and Connor Stafford
 Amy and Vann Stancil
 Claire Lorch and Fred Stang
 Irma Stein †
 Anna and Josh Stein
 Jeannette and Roy Stein
 Jane and Adam Stein
 Joy Steinberg
 John Stelling
 Karin and George Stephens
 John Stephens
 Ellen Longino and Russell
 Stephenson
 Jean Stewart

Sarah Stitsinger
 Randy Stokes †
 Cynthia Stratton
 Susan Slatkoff and Ronald
 Strauss
 Libby and John Stucky
 Jennifer Stutzman
 Barbara and Gray Styers
 Jane Suber
 Jim Suiter
 Rema and Ed Summers
 Janice and Edward Swab †
 Louise Romanow and Bill
 Swallow
 Terri and David Swanson †
 William Swindaman †
 Juanita Shearer-Swink and
 Rodney Swink †
 Nancy Tannenbaum
 Mary and Richard Taub
 Barbara Taylor
 Abigail and Joel Tepper
 Linda and Daniel Textoris
 Clarke Thacher †
 Thrya Rauch and James Thiem †
 Barbara Hunter and Erik Thomas
 Anne and Stuart Thompson
 Nina Threatt
 Erica Friedman and Leslie Tobin
 Joanne Todd †
 Pam and Fred Toms †
 Tracy Traer †
 Emily Herbert and Jacob Traverse
 Ginger Travis
 Lucy Harber and John Tullo
 Wanda and John Tyrell †
 Martha and Ruel Tyson

Julie and David Uehling
 Kim Church and Anthony Ulinski
 Ann and David Umbach
 Betsy Underwood †
 Karen Untz
 Robert Upchurch
 Ingeborg and Bruno Urban
 Milada Vachudova and Chad
 Bryant
 Lisa Valdivia
 Gwen and Jon Van Ark
 Paulette Van de Zande
 Anne-Marie and John Vanaman
 Barbara and John Vandenbergh †
 Gail and Reed VanMatre
 Kuruvilla and Magrith Verghese
 Page and James Vernon
 Meredith Vey and Jose Lara
 Patricia and Patrick Vincent
 Jane and Steve Vogel
 Jean Vollrath
 Teresa and Mark Wagner †
 Margaret and Geoffrey
 Wainwright
 Jane and Richard Walker
 Betty Gunz and Joseph Wall
 Jerri and Lewis Wallace †
 Patrick Wallace
 Ann and Justin Waller
 Diana Walstad
 Carol and Brad Walters
 Zhiheng Wang and Yurong Liu
 Tanyss Mason-Ward and Jon
 Ward
 Seth Warner
 Karen Fisher and Robert
 Warren †





Arameta and Roger Warren
 Marsha and David Warren
 Liling and Douglas Warren
 Michele and David Warshauer
 Jean Waterbury
 Elizabeth Watson
 Isabelle Webb
 Karen and Kent Weeks
 Clarice and Richard Weinberg
 David Welch
 Karen and Richard Wells
 Darlene and Don Wells
 Lori Etter and Jeff Welty
 Sara and Ronald Wenda
 Linda Rudd and Thomas
 Wentworth †
 Dennis Werner
 Helen Wettach †
 Emily Wexler
 Nancy Whinham
 Joan and Kinnard White
 Michi Vojta and Bruce White
 Carolyn and Peter White †
 Ludie and Fred White
 Christoher Wienert
 Bev and Jim Wiggins
 Barbara and Sam Wilburn
 Minna and Haven Wiley †
 Wilkes Family
 Fleeta Wilkinson
 Judi and David Wilkinson
 Mary Williams

Katherine Williams
 Margaret and John Williams
 Charlotte and Shawn Williams
 Louise Williams
 Diane and Robert Willis
 Peggy and Scott Wilson †
 Joanne and Kenneth Wilson
 Nancy and James Wilson †
 Karen Rindge and Reid Wilson
 Sue and N. Rouse Wilson
 Marion and John Wilson
 Agnes and Richard Winnike
 Pam and Robert Winton
 Ellen Shrader and Ed Witkin
 W. Aiken Wolfe †
 Warren Womble
 Hayley Wood
 John Wood †
 Dick Wood
 James Wood †
 Lara Hamblen and Joseph Wood
 Julia Wood and Robbie Cox
 Wayne Wood
 Annie and Bruce Woodard †
 Ann and Lewis Woodham
 L.E. Wooten
 Fabienne Worth
 Judy and Mark Wright
 Andrew Wright
 Lee Taylor and Robert Wright
 Gale and William Yeager
 Sylvia White and Ned Yellig †

Cindy and John Yoakum †
 Svetlana and Kurt Yokum
 Penny and Paul Young
 Patricia Petersen and Douglas
 Young †
 Barbara and Clifford Younger
 Susan Zarutskie
 Elizabeth and Mark Zeringue †
 Nancy and Charlie Zimmerli †
 Faith Zinner
 Anne and Robert Zucker

\$1–\$249 (Organizations)

Accipiter Galleries
 Bagwell & Bagwell, Inc.
 BD Matching Gift Program
 CA Technologies
 Capital City Garden Club
 Carolina Canoe Club
 Chapel Hill Friends Meeting
 Chapel Hill Garden Club
 Colony Woods Garden Club †
 Community United Church of
 Christ †
 Covidian Matching Gift Program
 Custom Brick Company, Inc.
 Dallas Poets Society
 Fidelity Charitable Gift Fund
 GameDinner.com, LLC
 GE Foundation
 Grass Roots Press †
 Hidden Hills Garden Club

Holocon, Inc.
 ISM-CV Triad Chapter Board
 Kontek Systems
 Lake Forest Garden Club †
 Linville Owners Association
 Monsanto Matching Gift Center
 J. S. Lane Company, LLC
 Ninth Street Bakery
 Progress Energy
 Raleigh Garden Club
 Square D Company - Schneider
 Electric

Swanson & Associates Landscape
 Architecture
 Table of Contents
 The Community Foundation of
 Western North Carolina
 The J.P. Morgan Chase Founda-
 tion
 The Sun Publishing Co., Inc.
 Trial & Error Garden Club †
 Wolverine World Wide Founda-
 tion

In-Kind Donations

HagerSmith Design, P.A.
 In Situ Studio
 Lip Service Contemporary
 Catering
 Table of Contents

† Denotes first gift to TLC was made at least 20 years ago.

Board of Directors (July 1, 2011–June 30, 2012)

Anne Stoddard, Chair (Orange)
Sig Hutchinson, Vice Chair (Wake)
Bill Holman, Secretary (Wake)
Michael Mankowski, CPA, Treasurer (Orange)
Adam Abram (Orange)
Charlie Bolton (Chatham)
Tom Bradshaw (Wake)
Stacey Burkert (Durham)
Becky Daniel (Wake)
Danny Kadis (Wake)
William "Skip" London (Chatham)
Virginia Parker (Wake)
Joan Siefert Rose (Orange)
Dale Threatt-Taylor (Wake)
Larry Tombaugh (Wake)
Laura Horton Virkler (Orange)
Larry Zucchini (Wake)

TLC Stewardship Advisory Council

John Connors, Biologist and Naturalist Center Coordinator, NC Museum of Natural Sciences
Amin Davis, Ecologist and Environmental Review Coordinator, NC Division of Parks and Recreation
Chris Moorman, Professor of Wildlife Ecology, NC State University
Jesse Perry, Director of Public Programs, NC Museum of Natural History
Mike Schafale, Ecologist for the NC Natural Heritage Program
Dean Urban, Professor of Landscape Ecology and director of the Landscape Ecology Laboratory, Nicholas School of the Environment at Duke University

Staff (July 1, 2011–June 30, 2012)

Kevin Brice - President & CEO
Alberto Alzamora - Accountant
Donnie Barnes - Land Steward
Ellica Church - Annual Giving Manager
Leigh Ann Hammerbacher - Conservation Planner
Robert (Bo) Howes - Conservation Project Manager
Tandy Jones - Director of Special Projects
Jeff Masten - Director of Conservation Strategies
Paula Mazzanti - Development Operations Manager
Aime Mitchell - Development Operations Manager

Jennifer Peterson - Communications Coordinator
Jessica Poland - Business Manager
Tabitha Roberson - Conservation Project Manager
Jon Scott - Conservation Project Manager
Walt Tysinger - Land Manager
Anne-Marie Vanaman - Director of Development & Marketing

CREDITS

Cover Photo: Deep River, by Dan McCarty
Inside Cover spread: Farm, by Jennifer Peterson
Page 1: Horton Grove, by Jennifer Peterson
Page 2: Cohen Farm, by Leigh Ann Hammerbacher
Page 3: Top - Holding Field, by George Hess
Bottom - New Hope Farm, by Sonke Johnson
Page 4: New Hope Creek, by Ty Rhudy
Page 5: Caroline MacNair Carl, by Jennifer Peterson
Page 6: Pepper and Salt, by Staff
Page 7: Top - Narron, by Jon Scott
Bottom - Cypress Swamp, by Leigh Ann Hammerbacher
Page 8: Top - Jesse Perry, by Leigh Ann Hammerbacher
Bottom Left - Bridge, by Chad Jemison
Bottom Center - Horton Grove, by Kevin Sargent
Page 9: Top Left - Irvin Farm, by Jennifer Peterson
Top Right - Irvin Jamboree, by Leigh Ann Hammerbacher
Page 12: Horton Grove MLK Work Day, by Leigh Ann Hammerbacher
Page 13: Fern, by Sonke Johnson
Page 14: Cohen Farm, by Sonke Johnson
Page 17: Top - Osprey, by Melissa Foshee
Bottom - Birding, by Jennifer Peterson
Page 18: Stream Critter, by Jennifer Peterson
Page 19: Johnston Mill, by Jennifer Peterson
Page 20: Top - Farm, by Rita Cileo
Bottom - Black Patch Farm, by Staff
Page 21: Sweet Magnolia, by Anthony Cileo
Page 22: Heron, by USFWS
Page 23: Otter, by Melissa Foshee

Page 24: Rocky River, by Frankie Clark
Page 25: Red-headed Woodpecker, by Dan McCarty
Back Cover: Field, by David Blevins

Design: Bryant Cole
Printing: www.barefootpress.com
Maps: Leigh Ann Hammerbacher





514 South Duke Street
Durham, NC 27701

NONPROFIT ORG.
US POSTAGE
PAID
RALEIGH, NC
PERMIT #2441

www.triangleland.org

