



Saving the Places You Love
ANNUAL REPORT 2004-05

Triangle Land Conservancy protects important open space—stream corridors, forests, wildlife habitat, farmland and natural areas—to help keep the Triangle region a healthy and vibrant place to live and work.





From the President

Dear Fellow TLC Members,

As we look at our land trust at the outset of 2006, we see an organization that has accomplished a lot, and yet still has a lot to achieve. Looking closer, we see an organization that is growing, continually increasing in its effectiveness, and which will rise to meet the challenges that lie ahead.

Two recent accomplishments illustrate the effectiveness of Triangle Land Conservancy.

One is the Justice Lands, a 760-acre property on the Deep River in Chatham County. TLC succeeded in negotiating a purchase of this land in 2003, for \$3 million payable over three years. Our superb staff first succeeded in securing a large grant from the NC Clean Water Management Trust Fund to meet the first payment, and then subsequent grants from the NC Natural Heritage Trust Fund to meet the final two payments.

Just recently, at the end of 2005, TLC deeded this land to the state parks division as conservation land. (State law requires that the state own any land purchased with funds from NC Natural Heritage Trust Fund.) The land may one day be a key element of a state park on the Deep River.

TLC was persistent in negotiating with the Justice family on a purchase agreement, and in the course of this there was interest expressed by the development community in the tract. Had TLC not pursued this property in a timely manner and with persistent determination, there would not be the possibility of a state park on this land.

TLC is now working with adjacent landowners to add up to 450 acres and increase the conservation impact of the Justice Lands for the water quality of the Deep River, for wildlife habitat, and for future recreation opportunities.

The other recent accomplishment I note is the purchase of the "Erwin Trace" property near New Hope Creek and Duke Forest. This is a 43-acre addition to augment the New Hope Creek corridor project on a property straddling the Durham-Orange county line, and a key tract for leveraging the conservation of an additional 60 acres in the area.

As many of you will recall from the news coverage of this project, the property was approved for residential development by Crosland Properties. After (and only after) Crosland relented to community pressure and agreed to sell the property for \$1.5 million, TLC became involved as both a donor to the purchase fund and as a catalyst, or "shuttle diplomat," interacting with four local governments to encourage them to provide the needed funding.

Triangle Land Conservancy made the difference in both of these cases. But for TLC, the Justice Lands would not exist, and the Erwin Trace purchase might not have been successful.

I must also comment on the administrative staff of the organization. Under the inspiring leadership of Kevin Brice, and as a result of the efforts of a truly highly professional staff, TLC as an organization is achieving new heights. The complexity of the conser-

vation projects TLC has been able to pull together — the Erwin Trace project with multiple government and community partners, the Horton Grove and Snow Hill projects with developer D.R. Bryan, the Justice Lands funding through the NC Natural Heritage Trust Fund — speaks volumes for the effectiveness of the staff.

Now at the beginning of 2006, we are forging ahead with exciting new initiatives in land protection — notably in the Deep River area where we can add to the White Pines property to create an even larger preserve, in the Mark's Creek area of Wake and Johnston counties, and in partnership with many communities, organizations and agencies on the Falls Lake Initiative.

The work Triangle Land Conservancy does is critically important to our greater community, in that we protect water quality, wildlife habitat, and provide a green space legacy for generations to come. I urge you to continue your support of TLC, both financially and by getting involved in volunteer efforts.

John R. McAdams

President

TLC's work on New Hope Creek helped to protect the keystone tracts of a natural corridor from Duke Forest to Jordan Lake.





New Hope Creek woodlands at the corner of Erwin and Pickett roads have been protected by TLC, a neighborhood group, and four local government partners.

TLC played a vital role in the effort to protect 106 acres of woodlands along New Hope Creek.



Conservation Priorities

NEW HOPE CREEK

Conservation focus: Working in partnership with city and county governments to protect the last few pieces of land that will fulfill the vision of the New Hope master plan for a natural trail and wildlife corridor stretching from Duke Forest to Jordan Lake.

New Hope Park

TLC typically stays out of local development issues. But the New Hope Park struggle of 2005 was far from the typical local development issue. This issue saw a partnership forged between four governments. It saw a group of neighbors willing to put their own money behind their demands. And it saw a local landowner offering a bargain price for conservation on long-sought land.

Joining the fray after the developer agreed to walk away, TLC persuaded the neighbors to raise \$200,000, fronted the group's \$200,000 commitment and administered its fundraising; negotiated with the Penny family to secure bargain sale and conservation easement options on 55 acres; and encouraged the city of Durham to participate in the partnership by paying a portion of the City's share from TLC's New Hope Creek Fund.

New Hope Park is a textbook example of what TLC calls a conservation assist. TLC's name will never appear on the property deeds, but TLC played a vital role in the effort to protect 106 acres of woodlands representing the keystone of the natural corridor along New Hope Creek.

DEEP RIVER

Conservation focus: Protecting unique natural areas for wildlife habitat and educational purposes, maintaining clean water for local communities, and working toward the goal of creating a new state park.

Justice Lands

In 2003, TLC made a daring commitment, agreeing to purchase the 760-acre Justice Lands for \$3.3 million over three years. An initial funding commitment from the NC Clean Water Management Trust Fund provided a \$1.8 million downpayment. That gave TLC two years to raise the remaining \$1.5 million. This year, TLC made good on the balance, with help from the NC Natural Heritage Trust Fund. The funding source requires the land to be owned by a state agency, so TLC has transferred ownership of the Justice Lands to the division of state parks. TLC continues for the time to manage the property. The Justice Lands could become an anchor of a future state park on the Deep River, envisioned in the state parks' New Parks for a New Century plan.

MARK'S CREEK

Conservation focus: Protection of the core of a 7,500-acre landscape of pastures, croplands, forests and wetlands, with a dual emphasis on creation of a regional park along the Mountains-to-Sea Trail connected by greenways to neighboring towns and preservation of the area's three centuries of rural tradition.

Mark's Creek Wetlands

After two years of collaboration, the Mark's Creek Initiative partners made their first conservation acquisition in 2005. The partners are TLC, the Trust for Public

A leaning sycamore shades the Deep River at the Justice Lands.



Land (TPL), and Wake County Parks, Recreation & Open Space (Wake PROS). The acquisition is a 31-acre tract off Turnipseed Road near Wendell.

The land, part of an extensive Mark's Creek wetlands complex, was acquired from a local hunting club for \$160,000. The NC Ecosystem Enhancement Program, a branch of the state Department of Environment and Natural Resources that protects streams and wetlands to mitigate damage done during road construction, funded the purchase.

Mark's Creek flows down the western side of the 31-acre property and is joined by two other streams, Gin Creek and Sandy Branch. Beaver ponds on each of the creeks flood 18 acres of the tract, creating important habitat for wintering waterfowl and a breeding ground for amphibians and turtles. The wetlands also filter pollutants, helping to keep Mark's Creek clean before it flows into the Neuse River.

LITTLE RIVER

Conservation focus: Protecting the water quality of the Little River and Little River Reservoir, as well as preserving the family farms, scenic beauty, and wildlife habitat of the river corridor. Our work in the Little River corridor ties directly into a major initiative to protect drinking water sources in the Upper Neuse River Basin.

Horton Grove & Snow Hill

Credit developer D.R. Bryan for keeping his word. Bryan Properties, his development company, began work at

Treyburn by inviting local residents and area stakeholders to several brainstorming charrettes. Many at the tables called for large-scale conservation and, true to his word, Bryan looked into the possibilities.

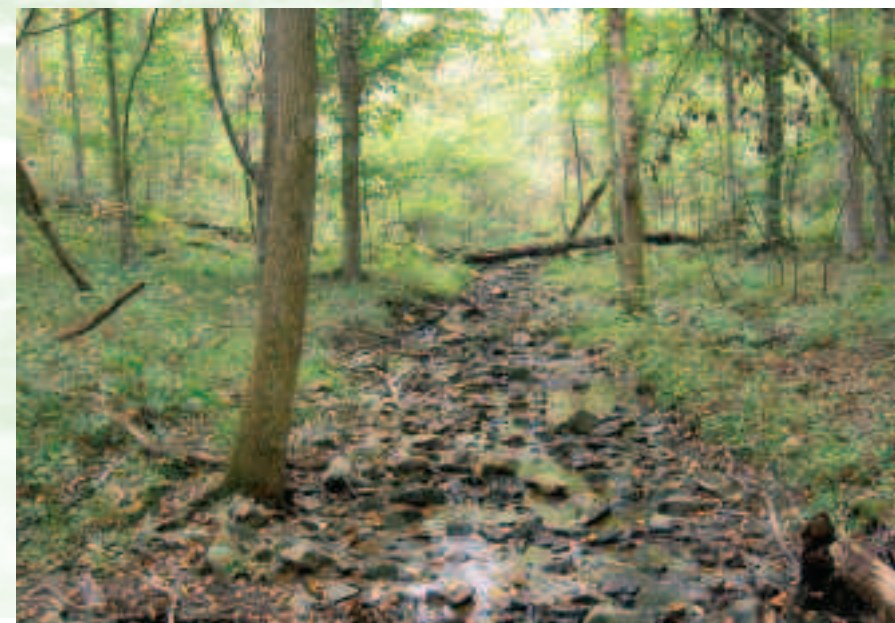
What he found was that conservation can make good business sense.

Persevering through several very complicated transactions, Bryan and his associates in late 2004 and 2005 made a series of conservation donations totaling 872 acres at two sites. At Horton Grove, in the shadow of the Stagville state historic site, Bryan donated 594 acres for a nature preserve. About one-and-a-half miles to the southwest, on Snow Hill Rd., Bryan Properties donated 170 acres in 2004, and in 2005 added a 48-acre conservation easement. Third phases of donations at both sites should wrap up in 2006.

Conservation can make good business sense.



Above: Beaver ponds on Mark's Creek and its tributaries create an extensive wetland system.



Horton Grove Preserve protects more than five miles of streams that feed into Falls Lake, keeping drinking water clean for hundreds of thousands in the Triangle.



Family Lands

HOLDING FARM

The Holding family of Johnston County continued its commitment to conservation with easement donations of 136 acres in late-2004 and 60 acres in 2005. Combined with an earlier donation, the Holdings have now protected 296 acres in a rapidly developing area near Clayton. The land, a combination of agricultural land, timberland, and natural forest, provides a water quality buffer on Buffalo Creek.

PICKARD'S MOUNTAIN

Those drivers and bicyclists who enjoy the scenic vistas along the rolling hills of central Orange County have no better friend than Dr. Charles Keith. In 1999, Dr. Keith donated a 22-acre conservation easement to TLC on a portion of his Pickard's Mountain property. The birds and animals that call Pickard's Mountain home also have no better friend than Dr. Keith. In late-2004, he added another 23 acres to his protected acreage. Combined with a neighboring conservation easement, most of the Pickard's Mountain Natural Heritage site has been conserved.



TLC's Working Lands Initiative aims to protect Chatham county farms and forests.

New Initiatives

WORKING LANDS INITIATIVE

In December 2004, the SOUL (Save Our Undeveloped Land) Fund of the Triangle Community Foundation made a three-year \$100,000 grant to TLC to increase farmland and forestland protection in Chatham County.

Work in the first year of the initiative has focused on research, planning, partnership building and outreach to farmers and forestland owners. A key result was the formation, at the request of the county commissioners, of a working lands subcommittee under the county's Agricultural Advisory Committee. The subcommittee will be looking for ways to bring funding to working lands conservation; the lack of funding has been identified as the primary impediment to more voluntary conservation by landowners.

UPPER NEUSE CLEAN WATER INITIATIVE

TLC responded to Raleigh Mayor Charles Meeker's call in his February 2005 State of the City Address for greater conservation in the Falls Lake Watershed by convening local and national conservation groups to explore collaborative approaches for water quality protection through land conservation. Reacting to signs of impending water quality troubles, not to mention the drought of 2004, Mayor Meeker in April 2005 announced a Falls Lake Initiative to protect the drinking water quality of Falls Lake through land conservation.

Since that announcement, stakeholders throughout the Upper Neuse River Basin have come together to expand the scope of the project beyond Falls Lake to all drinking water supplies in the basin.

TLC has played a role in the early technical studies and outreach planning. The goal of the technical studies is to identify priority lands for conservation. TLC will use that information to begin landowner contact and conservation negotiations. TLC's work on the initiative will focus in the Little River Priority Area. Other areas will be served by the other land trust partners, as well as local and county governments.



Photo: Frog Hollow Canoe & Kayak Services

Land conservation in the Upper Neuse will keep water clean for drinking, recreation and wildlife.

Stewardship

For TLC and all land trusts, acquiring a property or the management rights of a property is just the first step in protecting the conservation values of that land. Beyond is the long-term responsibility of preserving the ecological integrity of the land, which we accomplish through our monitoring programs. Sometimes we even work to enhance the ecological integrity of the land.

RESTORATION

Temple Flat Rock Piedmont Prairie Restoration

Before European settlement, grasslands up to 25 miles across pocked the North Carolina Piedmont. By the end of the 20th century, only a few remnants of Piedmont prairies remained, having been cultivated and planted with imported grasses for livestock by the settlers.

TLC is working to change that

A combination of mowing, herbicide spraying and a January 2005 controlled burn has created the conditions for a 17-acre former hayfield at the Temple Flat Rock preserve in Wake County to become a Piedmont prairie. Prairie grasses and wildflowers propagated for the purpose have taken root, creating habitat for the ground-nesting prairie birds like eastern meadowlark, grasshopper sparrow and Henslow's sparrow, as well as other species like grouse, quail and pheasant.

The restored Piedmont prairie at Temple Flat Rock is being born from the ash and charred vegetation that remained after the January 2005 controlled burn. .

N.C. State University botanists who helped devise the restoration plan will continue to use the project for research, performing tests to determine the most effective way to control invasive species and which seed collection methods work best, among others.

White Pines

Habitat restoration can turn conventional thinking on its head. At Temple Flat Rock, fire is good. At White Pines in Chatham County, cutting trees is good for trees.

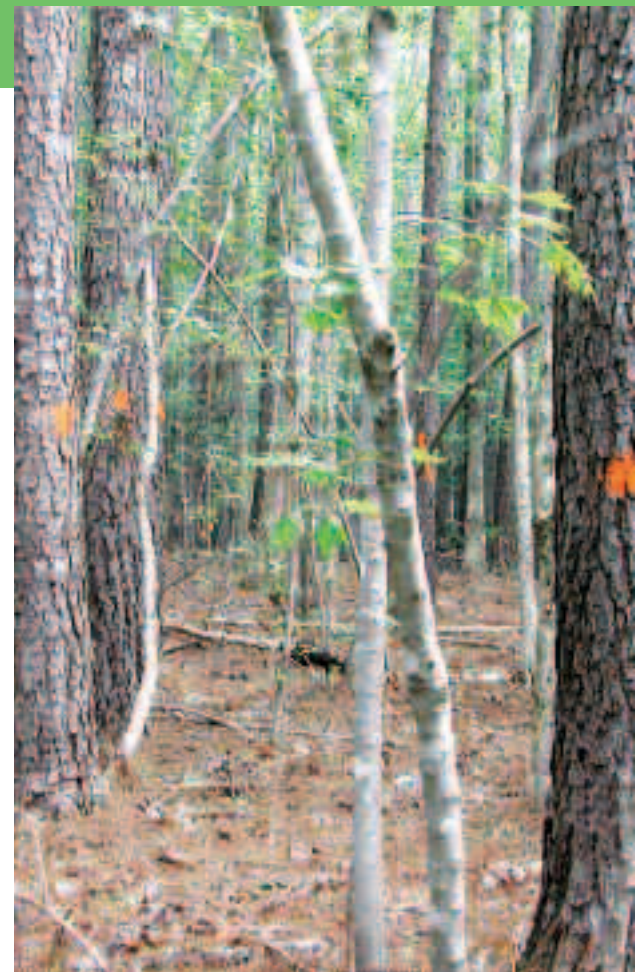
Protecting the existing stands of this nationally significant group of white pine trees — a remnant of the last ice age — and ensuring the survival of the species here are our top conservation objectives for White Pines.

To ensure the white pine's survival, TLC has undertaken a forestry project to plant up to 50,000 seedlings in the next few years. To make room for the seedlings, TLC in the fall of 2004 thinned (harvested) several stands of loblolly pines planted by a previous landowner.

When the seedlings go in the ground in the winter of 2008, the canopy cleared by the 2004 thinning will provide the perfect habitat for their development. By planting such a huge quantity, we guarantee that many trees will survive to maturity, be fruitful and multiply, thus ensuring the survival of the species here.

*Habitat restoration can
turn conventional thinking
on its head.*

Loblolly pines marked for thinning to make room for white pine seedlings. In a few years, 50,000 seedlings will be planted at the preserve, helping to ensure the white pine's survival here.

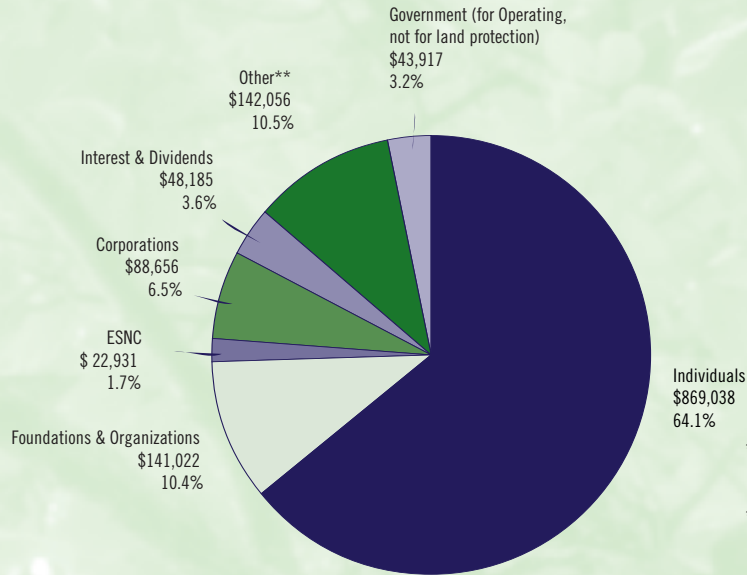


Financial Report

July 1, 2004, to June 30, 2005

Revenue

Total \$1,355,805



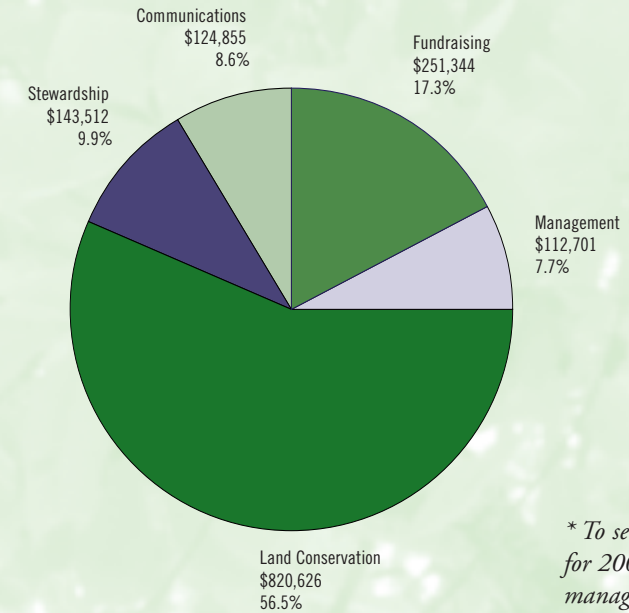
* Includes funds raised in the early stages of a campaign to build a revolving fund for land protection
 ** Includes in-kind; lease income, sales, misc; and transfer of land to other conservation owner

Additional Revenue

- Value of protected land \$8,732,901
 - Government funds leveraged for land protection \$1,335,373
- Total Revenue \$11,424,079**

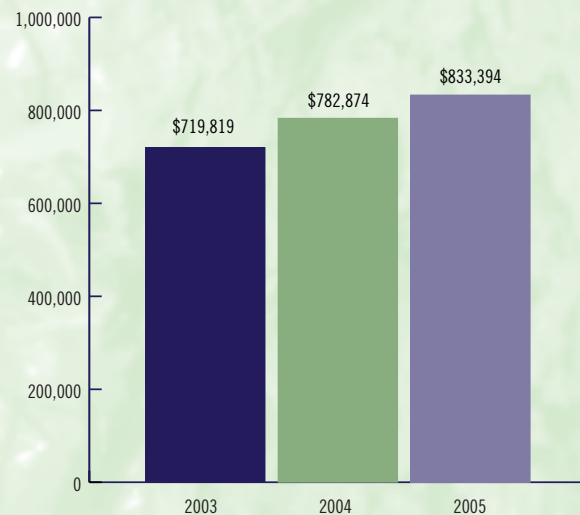
Expenses

Total \$1,453,038

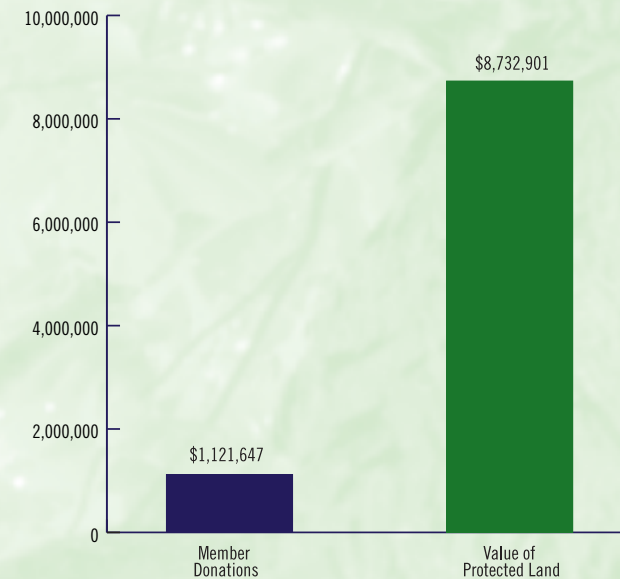


* To see a copy of TLC's audit for 2004-05, contact office manager Jessica Poland at (919) 833-3662 ext. 104.

Endowment & Board Designated Funds



Leveraging Your Donations – Value of Protected Land vs. Member Donations



Individuals, corporations, foundations & organizations who gave between July 1, 2004, and June 30, 2005, are listed by number of years they have given to TLC.

Every effort has been made to ensure that names are correct. Should there be an error, or if you have any comments or questions, please contact us at (919) 833-3662.

Donors of Land

Bryan Properties

Donors of Conservation Easements

The Holding Family
Dr. Charles Keith

River Society—Donors who gave \$1,000 or more for membership in 2004-05 (# of years membership)

Anonymous
Rosalind and J. Adam Abram (2)
Alfermann Construction Co. LLC, Matt Alfermann and Christina Cheatham (4)
Marcia Angle and Mark Trustin (5)
Arbor Realty (14)
Blanche and Zack Bacon (2)
Baja Burrito Company, Judy Murray (2)
Audie Barefoot (1)
Karen and Joe Bearden (8)
Nancy Tannenbaum and John Becton (6)
Gloria Blythe (6)
Audrey Booth (15)
Deanne and Kirk Bradley (6)
Mary Mac and Tom Bradshaw (9)
Yvonne Brannon and William Clifford (8)
Mary and Kevin Brice (8)
Irene and Alan Briggaman (8)
Jane Brown and James Protzman (11)
May and Cotton Bryan (1)
Libby and Lee Buck (1)
Carolina Canoe Club (13)
Shannon and Chris Ciapciak (3)
Cisco Systems, Inc. (5)
Frederic Dalldorf (16)
Marlene and Dick Daugherty (2)
Craig Davis Properties (1)
Kent Davis (6)
Liz and Bob Dean (17)
Hope Dearborn (1)
Kate Dixon and Dan Wilkinson (14)
Shirley Drechsel and Wayne Vaughn (12)
East West Partners Management Co. (1)
Julia Elsee (15)
William C. Ethridge Foundation, Inc. (11)
The Ettinger Foundation (1)
Ken Faircloth (1)
Fidelity Bank (1)
Kate and Thomas Fonville (1)
Four Oaks Bank & Trust Co. (15)
Gail Boyarsky and Walter Fowler (14)
John Freeman (1)

Carole and Frank Gailor (8)
Jennifer and Eric Ginsburg (3)
Barbara and James Goodman (4)
Karen and Charles Goss* (4)
Ruth and Stephen Grant (6)
Great Outdoor Provision Co. (13)
Hedgehog Holdings, LLC (1)
Mary and Ronald Helms (17)
Wendy F. Greene-Helms and Russell Helms (5)
Pamela and Brad Hemminger (12)
Joe Herzenberg (14)
Virginia Hester (7)
C. Kay Briggs and Christopher T. Hitt (7)
Alice and George Horton (6)
Mary and Jonathan Howes (9)
Nell Joslin (7)
Mary and Bill Joslin (20)
Steven Joyce (2)
Betty Kenan (1)
Nannerl and Robert Keohane (12)
Tom Krakauer (15)
Cathy and Randy Lambe (15)
Betty and Ayden Lee (15)
Carolyn Leith (13)
The Lightworker Foundation (1)
Melissa Little (1)
Jennifer Maher (14)
Harriet and D.G. Martin (2)
Tommy and Marsha Massey (3)
The John R. McAdams Company, Inc. (13)
Bet and Sandy McClamroch (17)
Susan and Robert McClanahan (5)
Sonya McKay (2)
Rogers McVaugh (10)
Ruth and Horst Meyer (5)
Betty Ann and Lovick Miller (13)
Patty and Thruston Morton (5)
Marcy Muchmore (8)
Wendy and Charlie Musser (15)
Chuck and Laura Neely (6)
O'Brien/Atkins Associates, PA (10)
Peg Parker (16)
Josie Ward Patton (2)
Carolyn and Wade Penny (11)
Susan Joyner and Bryan Peters (9)
Peter and Ona Pickens (7)
The John William Pope Foundation (1)
Prentice Foundation (4)
Liz Pullman (19)
Alfred and Suzy Purrington (10)
Bubba Rawl (1)
Gail and Mike Ray (12)
RHO, Inc. (1)
Wyndham Robertson (2)
Andrea Rohrbacher (16)
Liz and Butch Rooks (8)
Jane and David Ruffin (9)
Sallie Shuping-Russell and John Russell (2)
Hildegard Ryals (20)
Ann and Charles Sanders (3)
Harriet Sato (12)
The Mary D.B.T. Semans Foundation (1)
Kathleen and Todd Shapley-Quinn (7)
Marcee and Jay Silver (11)
Ann C. & C. Hamilton Sloan Foundation (9)
Pam Troutman and Jim Smith (21)
Eve and Sherwood Smith (16)
Judith Snyderman (6)

Sylvia and Donald Stanat (18)
Strowd Roses, Inc. (1)
Ulane and Carson Stuart (4)
Walter Stults (10)
Annie and Patrick Sullivan (5)
H. Lee Swanson (15)
Hayden and Bud Taylor (12)
Juliann Tenney and Bill Reppy (11)
Dr. Tallman Trask (8)
Ann Von Gruenigen (4)
Wake Stone Corporation (12)
Bud Wegner (1)
Nan and Burt Weiss (1)
Shirley and Charles Weiss (18)
Nancy and Monty White (18)
Mike Whitley (1)
Wild Bird Center (6)
Victoria Will and Michael Kowalski (8)
Catherine and Mason Williams (1)
Tracy and Robert Winston (1)
Darlene and Ed Woolner (1)
Clara and Gilbert Yager (20)
Rosemary and Smedes York (19)

Government

NC Clean Water Management Trust Fund
NC Department of Environment & Natural Resources, Ecosystem Enhancement Program
Natural Heritage Trust Fund
City of Durham
County of Orange, Environment & Resource Conservation Department
Wake County Parks, Recreation & Open Space

Corporations (# of years given)

Alfermann Construction Co. LLC (4)
Alphin Design Build (7)
Arbor Realty (14)
Baum Diamonds (7)
Bish Enterprises (8)
Bryan Properties (1)
Cisco Systems, Inc. (5)
Craig Davis Properties (1)
David Bibb Photography Gallery (1)
East West Partners Management Co. (1)
Entrepreneurial Assistance, Inc. (2)
Fidelity Bank (1)
Four Oaks Bank & Trust Co. (15)
Grass Roots Press (9)
Great Outdoor Provision Co. (13)
Greensboro Radiology (3)
Hedgehog Holdings, LLC (1)
Hoffman Nursery (2)
Holocon, Inc. (9)
Horse and Buggy Press (2)
Hunter Industries (8)
The John R. McAdams Company, Inc. (13)
Metasoft Systems Inc. (1)
Ninth Street Bakery (3)
O'Brien/Atkins Associates, PA (10)
Pickett-Sprouse Real Estate (2)
Quantum Environmental, Inc. (1)
RHO, Inc. (1)
The Stoddard Group (2)
The Sun Publishing Co., Inc. (3)

Wake Stone Corporation (12)
Weaver Street Realty (12)
White Oak Properties (2)
Whole Foods Market (2)
Wild Bird Center (8)
Wild Birds Unlimited (1)
Withers & Ravenel, Inc. (3)

Foundations (# of years given)

Mary Duke Biddle Foundation (8)
Dustin's Greenhouse (1)
William C. Ethridge Foundation, Inc. (11)
The Ettinger Foundation (1)
AJ Fletcher Foundation (4)
Hartfield Foundation (1)
The Lightworker Foundation (1)
The John William Pope Foundation (1)
Prentice Foundation (4)
The Mary D.B.T. Semans Foundation (1)
Ann C. & C. Hamilton Sloan Foundation (9)
Strowd Roses, Inc. (1)
Triangle Community Foundation Donor-Advised Funds (9)

Organizations (# of years given)

Carolina Canoe Club (15)
Carolina Tarwheels Bicycle Club (1)
The Chapel Hill Garden Club (10)
Colony Woods Garden Club (11)
Community United Church of Christ (13)
Conservation Trust for NC (6)
Dogwood Garden Club (9)
Duke Law School Environmental Law (1)
Earth Share of North Carolina (10)
Hills & Pines Garden Club (9)
Holly Ridge Middle School (1)
Lake Forest Garden Club, Chapel Hill (12)
NC Society Colonial Dames XVII Century (2)
New Hope Audubon Society (8)
Oakview Garden Club (18)
Pi Alpha Xi (18)
Questers-Lee Searchers #1123 (1)
Trial & Error Garden Club (8)
Wake Audubon Society (15)
The Woman's Club of Raleigh (6)

Matching gift corporations

AT&T
Bank of America
BD Technologies
Countrywide
Freudenberg Spunweb Company
GlaxoSmithKline
IBM
Moen, Inc.
Progress Energy
The Reinhold Family Foundation
The Teagle Foundation
Tyco
Wachovia

Individuals

Twenty-Three-Year Members

David & Molly Bland
Beverly and David Moser

Charlotte Jones-Roe and Charles E. Roe

Twenty-Two-Year Members

Nancy & Norm Gustavson
Irma Stein
Pearson H. Stewart

Twenty-One-Year Members

Linda Convisser and Bruce Guild
Eva and Ernest Eliel
Richard and Florry Glasser
Adrianna and Benson Kirkman
Ann and Eugene Merzbacher

Twenty-Year Members

Natalie and Stacy Barbour
Ann and Thomas Elleman
Olga and Doug Eyre
Jane and Geoffrey Gledhill
Kathy and Jon Mauney
Julie Moore
Dr. Arthur J. Prange, Jr.
Betty Rapp
Dorothy and Richard Rettig
Sue and Richard Richardson
Linda E. Rudd and Thomas R. Wentworth
Priscilla Sprunt

Nineteen-Year Members

Anonymous
Stephanie Bass and Bill Holman
Pat Carstensen and Ed Harrison
Rufus Dalton
Ann and Robert DeMaine
Muriel Easterling
Marie and Sam Hammond
Alan R. Johnson
Cathy and Randy Lambe*
Caroline and Paul Lindsay
Dell Little
Ruth and Jim Mead
Miriam Murdock
Beth and Daniel Okun
Betsy and John Pringle
Jane and Stephen Rhudy
Eva and Claude Sitton
Mr. and Mrs. Robert E. Stipe
Betsy Underwood
Marianne and Lloyd Van Tassel
Minna and Haven Wiley
Lynn Wilson & Paul M. Killough
Barbara Wishy

Eighteen-Year Members

Christine Baermann
Sindy and Brad Barker
Thomas B. Barnett
Maryellen S. Bowers
Linda and David Brown
Elizabeth and James Bryan
Marjorie and Richard Cannity
Ann and Derb Carter
Liz and Bob Dean*
Margaret and Robert Ehle
Mary Lou Eycke

Mr. Eric M. Hawkins
Kate and Robert Healy
Joan and Richard Hiskey
Deborah and David Holland
Sylvia and Abraham Holtzman
Alexander Hull
Penelope and Eric Jensen
Linda and John Lapp
Nancy and Barclay Martin
Barbara R. McIntyre
Jane and Hervey McIver
Ms. Anne Minnotte and Mr. Tyre B. Lasitter
Marlys and Earl Mitchell
Nancy and Helmut Mueller
Mr. and Mrs. William O'Brien, Jr.
Lavon B. Page
Mary and Robert Peet
Fred W. Schmidt
Barbara A. Shaw
Miriam and Lawrence Slifkin
Clyde Smith
Constance and C. Leslie Sweeney, Jr.
Pam Timmons and Perry Haaland*
Joanne L. Todd
Daryl Farrington Walker
Richard Weintraub
Mary Louise Welby and Robert C. McNeil

Seventeen-Year Members

Ethelene Allen
Betty Alt
Barbara and Jim Avery
Dede Banks and Joe Jacob
Rebecca Boston and Scott Shore
Mrs. Lesta W. Carlo
Glenna Chapin
Jean and Arthur Chard
Jean and Art Cooper
Gail and Amos Dawson
Nancy Dole and John Runkle
Caroline and Richard Donnan
Rosanne and Larry Francis
Martha and Roy Girolami
Lallie and David Godschalk
Dr. and Mrs. Frederick Heaton
Bob Hellwig and Gordon Whitaker
Nancy Hillmer
Frances and William Hollister
Myrick Howard
William C. Jones, Jr.
Jane Kendall and Ran Coble
Aspasia and Kenneth Knoerr
Aaron M. Kreem
Herb Lamb
Susan and Wingate Lassiter
Julia MacMillan
Margaret and Richard McCann
Debbie and David McCarthy*
Lynn Mindel and Roger Grissom
Marie D. Moore
Eve and B.B. Olive
Mary G. Parker
Jean and Robert Phay
Lisa and David Price
Zina and Joseph Quinn
Theodosia Ribet
Anne Fior Scott

Maxine and Alan Stern
Carolyn and Shaler Stidham
Randy Stokes
Dr. Janice Stratton
Clarice and Richard Weinberg
Vicki and Stephen Weis
Peggy and Scott Wilson
Annie and Bruce Woodard

Sixteen-Year Members

Al Alphin
Marina and Wade Barber
Keith Beamon
Chris and Bob Berndt
Libby Searles-Bohs and Larry Bohs
Eliza W. Brogden and Howard A. Partner
Signe and Eugene Brown
Janet E. Campbell
John D. Cheesborough, M.D.
Laura and John Cotterman
Jessica and Jeff Coutu
Carmen and Charles Creech
Jennifer and Bill Cure
Helen Drivas and Denny O'Neal*
Francine Durso and Ted Shear
Nina and Bill Falconer
Gabrielle C. Falk
Jeanette and George Gann
Tom and Pat Griggs
Jill and Randy Heaton
Richard Hibbits
Stephanie Horton and John Finnegan
Jane Humm
Grace and Bill Hutchins
Marian and Thomas Jerdee
Charles A. Johnson, III
Harry E. LeGrand, Jr.
Janie and Bruce Leonard
Marilyn and Merle Marxen
Thomas R. McCurdy
Elizabeth Murphy and Charles Steenbergen
Regina and Ted Oliver
Patricia H. Petersen and Douglas Young
Harriet and William Procter
Carolyn S. Ramsey
Ellen and Ken Reckhow
Catherine Riggs
Mary Russell Roberson and Mark Powell
 Johnson
Theresa Rosenberg
Nancy and Stephen Schecter
Ellen Scouten
Juanita Shearer-Swink and Rodney Swink
Francine and Don Stephenson
Janice and Edward Swab
Terri and David Swanson
Margaret Tiano
Dr. Barbara Vosk and Dr. Howard Shareff
Cindy and John Yoakum
Laura Young and George McRae*
Elizabeth and Mark Zeringue

Fifteen-Year Members

Rosanna Adams
Bill Brideson
Sarah Campbell

Mary Beth Tobin and John Connors
Betsy and Bragg Cox
Anne Dahle
Mary H. Dawson
Nina Dodd
Renee Gledhill-Earley and Larry Earley
Marjorie Eckels
Beth and Tom Everly
Sarah Goddin and Scott Bryan
Jean V. Hamilton
Blanche and Quentin Haning
Peggy and Robert Harris
Margaret and Richard Hodel
Robin and Barry Jacobs
Mary and Jim King
Anne Nelson Loeb
Grant MacNichols
Dr. Melinda Meade
Paul J. Mobus
Kathryn Moss and Robert Merriam
Sheila and Bruce Nicklas
Anna and Ben Niemitz
Karl Petersen
Mr. and Mrs. William S. Powell
Merry and Robert Rabb
Thyra Rauch and James E. Thiem
Stephanie and Peter Ruzsa
Ms. Betty Sanders and Mr. Milton Heath
Edith and Joseph Scannell
Chris and Michael Schafale
Kathy and Sandy Seaton
Lillian D. Smith
Jane A. Spanel
Mr. and Mrs. Paul Stessel
William R. Swindaman
Sondra and Jerry Van Sant
Carolyn and Peter White
Sherry and Tom Worth

Fourteen-Year Members

Joanne Abel and Rama Mills
Pat Berryman and Paul Mortensen
Bernard and Charles Blanchard
Susan and John Bobinyec
Jeanne and Brian Boehlecke
Barbara and Ken Bollen
Kathy and Allen Boyer
Dan Brennan
Debra and Stephen Brown*
Hugh Carr
David T. Connelly
Marlene and Kenneth Coulter
Laurie Dunn and Crawford Crenshaw
Joyce and Shayne Gad
Jan and John Gregg
Robert J. Harvey
Jane and James Hunt
George Jackson
Dr. Robert J. Kavlock
Amy and Todd Klaenhammer
Linda Lahre
Dr. John A. Lang
Amy Mackintosh and Tom Kagan
Mrs. Samuel D. McPherson, Jr.
Eva C. Metzger
Elizabeth Moore and Rick Kunst
Connie and Richard Orander*

Matilda and William Parker
Carol and Charles Parron
Kathy K. Partin*
Judith and David Peterson
Doug Pfitzenmaier*
Debbie Powell
Charlotte and John Presley
Milo Pyne
Susan Reimer
Celeste and Herbert Shulman
Steven and Cynthia Sollod
Joyce and Fred Sparling
Pat and Bob Spearman
Jean Spooner
Catherine Starkweather and Dan Oldman
Robert P. Teulings
Clarke Thacher
Pam and Fred Toms
Margaret Wainwright
James W. Wood, Jr.
John C. Wood

Thirteen-Year Members

Elizabeth C. Anderson
Donna Baird
Mr. and Mrs. Stephen Bambara
Virginia and Samuel Baron
Louisa S. Barry
Kenille Baumgardner
Ann and Bill Borden
Martha C. Brimm and Richard V. Clark
Louise and Charles Bryan
Kathy Buck and Ken Moore
Mrs. Charles P. Bugg
Martha and Robert Cline
Jeffrey L. Cohen
Mr. and Mrs. L. I. Cohen
Vivian and Michael Doelling
Jeanne and Edward Downing
Elsie Eads
Linda and Rufus Edmisten
Patricia Ferrara
Harriette and Larry Frank
Carol and Nicholas Gillham
Hillel and Honre Gitelman
Susan Hester
Robert Hinson
Cathy Holt
Nell and Rudolph Howell
Maureen Johnson
L. Merritt Jones, Jr.
Bree Kalb
Kathleen A. Kidd
Steve Kroeger
Elizabeth J. Lassiter
Charles Latimer*
Carolyn Leith
Jean Anne and William Leuchtenburg
Livy and Dick Ludington
Carol McCormick and Mark Peifer
Jerry McCrain
Claire McCullough
Marg McEwen
Dorothy and Lawrence McGee
Portia McKnight and Florence Hawley
Ellen McRae
Carol Miller

Norbert Nevid
Marcia and Mark O'Neal
Ruth and Leland Phelps
Alan, Nancy and Alice Proia
Victor Rhodes, Jr.
Thomas W. Ruckdeschel
Gladys and Herschel Slater
Milton and Susie Small
Sharon Spangler and Gerald B. Pottern
Jo-Anna and Thomas Spector
George T. Stronach
Amanda and Brian Strong
Jane A. Suber
Rema and Ed Summers
Evelyn and Robert Tuck
Ingeborg and Bruno Urban
Barbara and John Vandenbergh
Jerri and Lewis Wallace*
Lydia Wegman and Robert Cantwell
Norma and Richard White
George and Harriet Williams
Barbara and Clifford Younger

Twelve-Year Members

Lynn and Mark Albert
Virginia Aldige
Sue Alexander
Joy Lewis and Fred Annand
Sylvia and Edward Arnett
Sissy and Charles Ashby
Jane S. Barringer
William R. Berry, M.D.
Dorothy C. Bevan
John P. Blackburn
Florence Blakely
Lanier and Fred Blum
Rebecca and John Board
Jamie Bonner
Gail and Tommy Bridges
Priscilla Canady
Wayne Cash*
Nancy and Neal Cheek
Sue and Rick Copland
Asta Crowe
Mr. and Mrs. E. P. Cunningham
Gail and Harry Curry
Patricia and Todd Dickinson
Elizabeth Ellerbee
Rev. W. W. Finlator
Ms. Vangie Foshee and Dr. William F.
 McDonnell
Janet and Karl Freburger*
Carol Gallione and Paul Luebke
Chris and Dave Gospodarek
Karin and David Griffiths
Cynthia Grover and Greg Smith*
Dolores Hall
Maidi E. Hall
Carol C. Hamilton
Karin and George Hess
Prof. Irving B. Holley, Jr.
Maria and Adam Holtzman
Mr. and Mrs. Robert Horton
Isham B. Hudson, Jr.
Hannelore and Konrad Jarausch
Eunice and Kemp Jones
Annette and William Jurgelsky

Bev and Mike Kawalec
June and Mark Kennedy
Carol Kirkland
Barbara and William Koch
Lillian and Robert D. Larrick
Dr. Edwin B. Lee
Patricia E. Levi
Dr. Lynn A. Maguire and Mr. Alec Himwich
Phillip Manning
Albert H. Maxwell, Jr.
Elizabeth and James Maxwell
Clif McCormick
William H. McCullough
Dr. Rogers McVaugh
Judy Murray
Frances Musser
the late Mary W. Oliver
Mary Olney and Allen Glazner
Thomas Patterson
Trish and Lee Rafalow
Dr. and Mrs. Morgan G. Reed
Ann and Edward Rick
Alan and Linda Rimer
Louise Romanow and Bill Swallow
Joel Rosch
Cynthia and Al Ross
Barbara Roth
Sarah Rubin and Jim Blose
Carolyn W. Rugen
Kathleen E. Scharl
Dr. Nancy Schiebel and Dr. Max Schiebel
Carl W. Sigel
Jean and J. Wesley Spalding
Larry D. Spicer
John H. E. Stelling
Elizabeth R. Stoker
Wanda and John Tyrrell*
David E. Uehling
Nellie L. Waltnr
Marsha and David Warren
Robert B. Warren
June D. Watson
Mrs. J. Edmund Welch
Sylvia White and Ned Yellig
Edna Wilson
Laura Yordy and Eric Thies
Alice Zawadzki

Eleven-Year Members

Jeanie Arnel
Nancy and David Bamberger*
Betsy and Walter Bennett
Elizabeth Broome
Nancy Burke
Mr. and Mrs. Claude E. Caldwell
Pat and Ray Carpenter
Margaret and Stephen Chandler
Jacqueline and William Collins
Elaine and John Cooke
Sidney Cruze and Don Moffitt
Stephanie Curtis and Ronald Swanstrom
Arthur DeBerry
Barbara and Allen Dearry
Lynne and Stephen Duncan
Anne and Robert Durden
Nancy Easterling and Charles Anderson
George J. Ellis, III

Danielle and David Feinstein
Elaine and Graham Fitzsimons
Constance and David Freeman
Cavett and Barker French
Virginia and Frank French
Frances Fuller
Kirsten and Sam Gaither
Jeri Gray
Edward Gregory
Betty Gunz and Joe Wall
Elise and William Guthridge
Susan and Thomas Hadley*
Trena Griffith-Hawkins and Richard Hawkins
Maura E. High
Risa Hiller and Ed Levin
Mark Johns
Frances and Edward Johnson
Carol Rae and John Kepler
Eleanor and Frederick Kilgour
Patricia Kohler
Ronette L. Kolotkin and Steven T. Pulling
Jutta Kuenzler
Joyce LaPine
Paula LaPoint
Eugene Lehman
Leah Levine
Dr. Liz Kanof Levine and Dr. Ron Levine
Mary Kay McDonald and Timothy O. Hull
Kay McGaw
Jenny and Keith Megginson
Paul W. Meyer
Victoria and Richard Moore
Ann and Alexander Motten
Michele Myers
Alison and James O'Reilly
Oliver Orr
Mary B. Pate
Mary and Robert Peck
Mr. and Mrs. Alex Polischuk-Sawtschenko*
Donna Prather
Nancy and Edwin Preston
Dr. Thomas L. Quay
Jeanne Robbins
Ruth and Russell Roberson
Ricky E. Savage
Jane Ellen Simmons and Roel M. Schaaper
Ann M. Sink
Forrest L. Smith, III
Phyllis and Lee Sockwell
Paul Sun, Jr.
Laurie and Joel Tepper
Daniel and Linda Textoris
Pam and Robert Winton

Ten-Year Members

Jean Anderson
George L. Auman, M.D.
Rita and James Borden
Grethel M. Boyette
Patricia and David Burgess
Shirley and Ivor Collins
Roberta and E.G. Cone
Linda Y. Cooper
Elizabeth Musser Dixon
Evelyn Durmaz
Nora Esthimer*
Audrey Evarts

John Fein
Elizabeth and J. Dan Ferguson
Kim Fisher
Dr. Douglas Frederick
Emily and Bob Grant
Martha and Robert Gwyn
Betsy and Joe Hackney
Mary Beth and James Hall
Martha E. Hamilton, Ph.D.
Lark Hayes
Laurie Heise and John Graybeal
Sara Hill
Thomas D. Hogen
Carol Hogue and Gordon DeFries
Irene and Robert Jordan, Jr.
the late Dr. James E. Kempe
Marlene S. Kinney
Lydia Lavelle
Alice and Sid Levinson
Dr. Stanley B. Levy
Quentin Lindsey
Elsa Liner
Ellen Longino and Russell Stephenson
Mary L. Markert
Dr. Raymond L. Murray
Jane and Jack Naftel
James W. Newlin
Jenny and Gary Nolan
Beverly and Chuck Norwood
Becky and Thomas Oxholm
Carolyn and Stanley Peele
Dave Penrose
Jesse Perry
James W. Poole
Eloise Potter
Pearl and John Salmeron
Mr. and Mrs. Thomas Scheviak
Holly Reid and Richard Shaw
Nancy H. Sitterson
Susan Slatkoff and Ronald Strauss
George M. Smart, Jr.
Catherine and Jeff Snow
Walter Stults
Jackie Staeheli
Ngairé and Willem Van Eck
Patricia and Patrick Vincent
Lee and Bruce Vrana
Teresa and Mark Wagner
Beverly and K. Wolf Webb
Sue and Larry Yarger*

Nine-Year Members

Nell Barkley
Linda and David Birnbaum
Rita and James Borden
Betsy and Charles Briscoe
Anne and Paul Bunce
Janet M. Campbell
Marianna and Lloyd Chambliss
Charity and Desmond Cole
Natalie and David Connell
Jean Connerat and Michael Levine
Kathy Cox
Lucy Daniels
Virginia and Samuel Davis
Katherine and Thomas Dow
Linda and Alan Eakes

Marcia Eickmeier and Larry Watkins
Ann and Edward Erickson
Ms. Sheila R. Evans & Dr. Seth R. Reice
Robert B. Green
Jean and Herb Harned
Wayne L. Harper
Susan M. Hatchell
Margaret Heath
Sandra and Peter Jacobi
Micheal P. Jokinen
Jane Kniffin
Anne and Jerod Kratzer
Susan and Howard Lander
Claire Lorch and Fred Stang
Joan Magat
Karen A. Magri and Christopher Dadd
Margaret Moore
Leann Nelson
Mrs. Jane S. Norris
Janice and Richard Palmer
Margaret and Hugh Partridge
Betty A. Pipes
Sheldon J. Raiter
Mary J. Rivers
Rachel Royce
Sherri and Ken Satterwhite
Ruth and John Schwab
Leslie Scott
Nancy Scott and David Henderson
David Stephan
Kenneth O. Summerville
Beth Timson
Maria Rita Villari and Anthony Wrobel
Michael K. Wade
Jane and Richard Walker
Dr. Camille M. Warren
Carol Wilcox and Todd Folsom
Mrs. Emmons J. Williams
Nancy and Charlie Zimmerli
Anne and Robert Zucker

Eight-Year Members

John R. Alianti
Jane Almon
Michelle and Tony Avent
Gigi Wainwright-Baker and Jeff Baker
Sara and Helmy Baligh
Hoyt Bangs
Karen and Ben Barker
Sylvia Bennett
Donna and Jack Blackmer
Betsy and Fred Bowman
Yvonne Brannon and William Clifford
Marilyn and John Brantley
Martha and Brainerd Chapman
Rebecca A. Cook
Dana Copeland, M.D.
Joan Curry
Kathleen and Channing Der
Teddy and Curt Devereux
Marla Dorrel and Gary Craven
Anna Lee Dorsett
Melanie and Michael Dubs
Paul Grendler
Gwen Griswold
Rollo Handy
Barbara Harvey

Mr. Loren Douglas Hintz
Richard C. Huelsman
Dr. and Mrs. Jack Hughes
Nancy and Sig Hutchinson
Karen and David Jessee
Sheila Kerrigan and Steve Clarke
Virginia Lansing
Susan and Bill Mattern
Susan Moore and Jerry Gaertner
Dorothy Onisko
Adaline and Ernest Pasour
Mary L. Porterfield
Barbara and Robert Rich
Lisa and Carl Rist
Kathy Roggenkamp
Mrs. Paul G. Rohrdanz
Emily Hull Ryde and Bill Webster
Mary Semans
Serozi Family
Kathleen and Todd Shapley-Quinn
John W. Shaw
Daniel Singer
George A. Smith
David, Delilah and Josh Snow
Brooke Triplett and Phil Massaro*
Robert W. Upchurch*
Megan Valentine and Ivy Hoffman
Carol and Bradford Walters
Liling and Douglas Warren
William P. Watkinson
W. Aiken Wolfe, Jr.

Seven-Year Members

Greg Abashian
Robert J. Ahlert
Connie and George Atkinson
Willa W. Austin
Kathy and John Austin
Judith and Allen Barton
Dr. and Mrs. Woodrow Batten
Patricia Blanton and Bob McConnaughey
Pat and Bill Blau
Cathy Brittingham
Deborah and Blackwell Brogden
Mary and Maurice Brookhart
R. Diane Burke
Joan and Maurice Bursey
Pauletta and Bob Calhoun
Pamela and William Camp*
Christine Carlson
Susan and Thomas Carson
Susan and Charles Carter
Deb and George Christie
Helen and David Clark
Raymond Collins
Jean and B.J. Copeland
Nancy Cormany
Jan C. Diamond and Todd L. Peterson
Frank Dilorio
Ted Dossett
Naomi and Allan Eckhaus
Susan and Allan Eure
Laura and Vann Evans
Karamarie Fecho and Charles Schmitt
Howard A. Fitts
Christy and Matt Flint
Angie Frizzell

Graham Gash
Malinda and Jan Grossman
Kay and Robert Gruninger
Mimi and Jon Haebig
Frank Harmon
Ti, Nikki and Bodhi Harmony
Martha H. Harris and Lee W. Finks
Elizabeth Heffner and Jason Misner
Susan Hertz
Charlotte Hord
Sylvia and Paul Hubbard
Alicia Jackson
Sally and Alan Johnston
Barbara and Don Kennedy
Ruth and Edmund Klemmer
Ronald Klepper
Martha and Peter Klopfer
Carrie and Howard Krasnow
Kathy and Lex Larson
Lori Leachman and Peter Lange
Clara M. Lewis
Glenna Maynus*
Margaret and Ross McKinney
Patricia and William McNeil
Julia and Michael McVaugh
Dr. Julie G. McVay
Eleanor and Ken Meardon
Merle Mishel
Joan and Gustavo Montana
Kat and Doug Nicholas
The Nicholson Family*
Chris and Bob Nutter
Martha and Charles Oldham
Kathleen Palmer
Sondra Panico and Stuart J. Levin
Brenda Pearson
Lucia C. Peel
Peter and Ona Pickens
Marilyn and Stephen Pizer
Warren A. Resley
John Richardson
Alison Roxby and Brian Rulifson
Lao Rubert and Steve Schewel
Iris Schwintzer
Mary A. Scroggs
Robert and Pearl Seymour
Maria and Jon Shain
Marywinne Sherwood
Katharine Silvasi
Patricia and Lyman Smith
Ginger Travis
Phyllis and John Vandenberg
Jon Ward*
Mr. Christopher Wienert
Fred White
Anne D. Williams and John Burness
Patricia Wilson and Charles Fishman
Marie and Donald Wood
Robert S. Wright
Svetlana and Kurt Yokum

Six-Year Members

Donna and George Allison
George Alwon and David Bibb
Jennifer and Mike Armstrong
Lillian and Ted Austin
Maureen and Alan Avakian

Leonard E. Bagshawe
Nancy and Kenneth Barber
John C. Barefoot
Phyllis C. Barrett
Laura Benedict and John Morris
Caelia and Andrew Bingham
Larry Bliss
Agna Boass
Steven Borabeck
Beverly Branaman
Margaret Alice Brown
Kathleen and John Bucher
Freddie Cable
Valerie and Charles Carter
Betsy Chamberlin
Michael Chaves
Mr. Lewis A. Cheek
Charles R. Coble
Jacob Cooley
Jane Cotter
Donna Dagavarian and Geoffrey Mock
Amin K. Davis
Maia Dery and Senga Carroll
Robert C. Doherty
Robert Dowling
Karen and Owen Dunlap
Jeanette Gay Eddy
Kamela and Jeffrey Edwards
Margaret Fegers
Nina Frankel and David DiGiuseppe
Nancy Gabriel
Beth Goldston
Nancy and Edward Griffin
John T. Griffin
Bonnie Hacker
Robinette Hahn
Doris Haisley
Dr. Mary G. Hammond and Mr. John G. Hammond
Rosalie Hammond and E. Magnus Persmark
Norma Harrell and Thomas J. Andrews
Mike and Carolyn Harris
Tom Harville, Jr.
Eleanor C. Hawkins
Eleanor Heath
Ben Hitchings
Ms. Mary Phyllis Horn
Pat and Donna Huff
Marion and Harry Iverson
Nancy and Norman Johnson
Arlon Kemple and Karen Long
Judy Kincaid and Phil Lehman
Hope G. Knight
Marek B. Kossowski
Susan Lamb and Kent Fawcett
Brent Lawrence
Isabel and Bill Lawrence
Joseph T. Lawrence
Suzy Lawrence
Ramona Lawson
Diane and James Lea
Mary Jo and Thomas A. Lehman
Nerys Levy
Anne and Chris Lutes
Linda and Michael Madigan
Laura and Gary Mason
Margaret McKean

Joanie McLean and Sharon Day
Angie and John McMillan
Marian and Anthony Meyer
Amey Miller and David Kiel
Sally and Claudius Miller
Theresa and George Miller
Robert Millikan
Leonard Mole
Margaret Newbold
Elaine and G. Joseph Norwood
Cheryl Oakes
Abigail and Juan Pons
Knut Radloff*
Jeannine and Mitchell Reese
Dr. Carol Reuss
Matthew Roe
Cindy Rogers and Tom Linden
Bonny and Ian Rooze
Beth Rosenberg and Debra Markley
Ruth and Tim Ross
Woody Seymour, Jr.
Bunny and John Shillito
Diane Shugars
Ruth Smullin
Judith Snyderman
Betsy and Bill Spaulding
Dirk Spruyt
Mildred B. Thiele
Carolyn Townsend
Rosa and Rex Tucker
Seth Warner
Lorelei Watts
Karen and Kent Weeks
Karen and Richard Wells*
Leslie and Beth Mclver Wickham
Bev and Jim Wiggins
Rachel Wilfert and Robert Graham
Wilkes Family
Betty and Noah Wilson
Nancy Wilson
Virginia Young and Jonathan Wiener

Five-Year Members

Richard D. Adelman, M.D.
Miriam and John Alexander
Lottie Applewhite
Mr. and Mrs. Richard Aycrigg
Ruth and Anthony Baragona
Linda Barnett
Patricia A. Bartell
Kathleen A. Bartelmay and Roger S. Perilstein
Beatrice and Whitman Bartley
Joseph L. Bauerband, III
Sara and Duncan Beale
Josephine Bell
Virginia and Walter Benson
Katherine and Kenneth Berger
Ruth and Jacob Blum
Jean and Bill Bohs
George Brine
David R. Brooks*
Jill and Al Bryant
Kathie and Ed Bryson
Thomas E. Buchheit
Celeste Burns and Alex Johnson
Marilyn Butler and Rob Nichols
Bessie and Paul Carrington

Barbara and John Chapman
Dr. and Mrs. Henry T. Clark, Jr.
Kathryn and Chris Clarke
Sheila Collins
Gretchen S. Cooley
Bonnie and James Cox
Cara Crisler
Carolyn and Peter Curtis
Karen Damari and Andy Roth
Nancy Daukas and Eric S. Downing
Mimi and Jim Davies
John M. Dennison
Laura K. de Ramel
Azot Derecho and Bradley G. Hammill
Susan K. Deter
Barbara Dickinson
Pam and Tom Diener
Fred Dietrich
Ann and Francis DiGiano
Sunita B. Driehuys
Yvonne and Richard Duke
Beatrice Dulberg
Julie Eastman and Mike Sollins
Sue Eldon
Sherry Essig and Warren A. Raybould
John Eyles
Paul Feldblum
Natalie Fiess
Renee Fink
Tom Fiore
John Franklin
Bruce Freeman
Dr. William C. Friday
Sheri and John Gant
H. Phelps Gates, Jr.
Elinor and William George
Sally Gewalt and John Petranka
Nancy and Roger Gorham
Betty and John Gray
Margaret Greer
Perrin Hammond, III
Ann Hamner
Lucy A. Harber and John Tullo
Kathy and Richard Harrison
Gayle Hartis
Frank Heath
Berl Heffner
Diane and Nelson Henderson
Cynthia and Robert Henshaw
Dr. Kristin Herzog
Alison Hill and Tandy Jones
James Holt and Michael Randall
Allison Hubbell
Barbara and Bob Hughes
Laura Jackson
Mary and James Jones
Raymond E. Karnes
Debra Kaufman
Thomas S. Kenan, III
Ellen Kinsinger
Nancy Kneepkens and Mary Ann Chap
Rosemary and George Kolasa
Peggy and Chuck Korte
Esther Krigbaum
Laura Lawton and Eric Pritchard
Roy, Mary and Betty Lindholm
Dr. Nancy T. Livingston

Stephanie J. London and Matthew P.
Longnecker
David G. Lutz
Karen M. Lynch
Peg and Tom Madden
Ann and Hank Majestic
Michele and Brad Makrucki
Elena and Max Matthews
Darlynn McCarter
Judy and Dan McConnell*
Laurie McLennan and Alexander F. Van Nievelt
Sylvia J. McSwain
June and Robert Minton
Beverly and Bob Murdock
Gwen Murphy and Lloyd Michener
John O'Keefe*
Nancy Vaughn Owen
Diane and Jeffrey Pettus
Stephen Pomeroy
Kenneth A. Popio
Lucia and E.K. Powe
Diane Pozefsky
Langdon Prouty
Colin Ramage
Jean A. Ramsay
Mary Ramus
Andy Riddle and Emily Feidelson
Barbara C. Rodbell
Barbara and Larry Rowan
Mary and Don Ruegg
Irene and James Scatliff
Evelyn Schmidt
Elley Schopler
Sharon and Joe Seigler
Sarah and Robert Shapard
Barbara and Jonathan Sheline
Evelyn Sims
Naomi Slifkin
Judy Smallwood
Margaret Greer
William J. Smither
Rebecca and Josh Socolar
Sarah Stein
Sarah Stitsinger
Vicki and Bob Stocking
Maura Stokes
Carolyn and Sandy Stopford
Dorothy P. Stowe
Diane and Robert Stranahan
Maxine Swalin
Sandra and Steve Toler
Ann and David Umbach
Carolyn Van Sant
Page and James Vernon
Ken Walsh
Arameta and Roger Warren
Michele and David Warshauer
Jean Waterbury
Emily Wexler
Barbara and Sam Wilburn
Drs. Claire and Allen Wilcox
Sue and N. Rouse Wilson
Rosemary Wilson
Roselyn and Kenneth Winter
Fabienne A. Worth

Four-Year Members

Lucy Adams
Lynne and Scott Albert
Karen Anderson
George Altshuller
Phyllis and Robert Andrews
Christopher J. Aquino*
Katherine Ball
Marcea and Paul Barringer
Lisa Beavers and Gerald Gurevich
Leandra Bedini
Lisa and Bob Berger
Catherine E. Bollinger and Thomas E.
Scheitlin
Nancy and Charles Breeding
Judy Brice
Bonnie J. Brown
Dr. B.J. Campbell
Nancy and Howard Carter
Karen and Douglas Clark
Louise Comtois
Carolyn and W. Robert Connor*
Robert A. Davis
Gillian and Paul Debreczeny
Marion and Howard Diamond
Alberta Dolan
Mia and Scott Doron
Ryan M. Draper
Marybeth Dugan and Kenny Dalsheimer
Gary F. Evans
Anne and William Flash
Robert E. Fleming
Carolyn Gerics
Carol and Lowell Goldsmith
Jimmy Goldston
Mary and Russell Graves
Pamela J. Guest and Robert D. McCall
Carol Gunther-Mohr
Martha Guse
Michael Halligan
Kari Hamel and Richard Stanford
Jan Harris
Kimberly Hill
Elizabeth Holder
Barry Howard
Thomas A. Humphrey
Ann and Warren Ingersoll
Keith Jensen
Barbara and Bruce Jentleson
W. Burns Jones
Caroline and Danny Kadis
Neal Kightlinger
Sherry Kinlaw
Ted LaMay
Ruth Lamanna
Jo Lamm
Ann and Kevin Leibel
Jennifer S. Li and Gordon Ralph Corey
Elaine and Randall Love
Betty and Jeff Masten
Susan McBean and Bill Bezilla
Julie McClintock
Janis McFarland and Rich McLaughlin
Steve Meehan
Jeff Morrison
Pamela Morse
Dean and Kathy Naujoks

George W. Newton
Marie and Jay Novello
Tammy and Paul Parks
Bernadette Pelissier and Vann Bennett
Jodi and Glenn Preminger
Karen Pulse
Bryna and Greg Rapp
Eliza and Dav Robertson
Helen and Robert Rodman*
Gloria and Jim Rolls
Mary Ross
Lori and Tim Rowe
William Schlesinger
Chad Schoen
Alan D. Seiferheld*
Anne and H. Douglas Sessoms
Beth and Larry Sherrill
Amy and Vann Stancil
Frances and Robert Stone
Ulana and Carson Stuart
Jane and Jack Stutts
Barbara N. Taylor
Elizabeth A. Taylor
Ted and Cara Triebel
Wendy A. Visscher
Jane and Steve Vogel
Louise Walker
Laurie Weakley and Emerald Estock
Frances A. Weaver
Libby Webb and Gary Ander
Darlene and Don Wells
Cindy and Lawrence Wiedel
Edith and Sheldon Wiggins
Charlotte and Shawn Williams
Lewis Woodham
Elizabeth Lafferty Woodman
Susan E. Zarutskie

Three-Year Members

Guenevere Abernathy and Michael Lemanski
Kelly Allen
Emily Ander
Sara and Rick Apgar
Lamar Armstrong
Trevis Averett
Joanne Band and Gary Winzelberg
Andrew Barnett
Mandy Beard
Laura and David Besley
Sory and Henry Bowers
Christie and Christopher Boyce
Mr. Richard Broadwell
J. L. Skip Browder
Kimberly and Robert Bryan
Christopher Capel
Cheryl Chamblee
Sandra and Lawrence Davis
Henri T. Dawkins
William T. Dickerson
John Dorney
Michele Dubow
Martha and Kevin Dungey
Nicole Engel
Linda G. Esterling
Kent Fiala
Stephanie Finn
John Flavin

Diane Frazier
Jean and Daniel Fuccella
Alexa and Peter Gerend
Dori R. Germolec
Rob Gluck
Dorothy Goodson
John H. Grimes
Charles F. Hall, Jr.
Henry L. P. Hall
Catherine Hanchett
Lynn and Richard Hayes
Kerry Hazen
Corinne and Walter Heck
Kala Herlands
Elaine and John Hill*
Kathleen Hughes
Neal Hunt
Barbara Hunter and Erik Thomas
John Hunter
Jeannette and Wallace Hyde
R. Thayer Jordan
Amy Kellum
Eric Labow
Ross W. Lampe, Jr.
Katherine and Sam Leaman
Joan Learner
Jerry Levit
Steven and Betsy Levitas
Nancy and Edward Lilly, Jr.
Marge and Thom Limbert
Dorothy Lineberger
Melissa and Josh Lozoff
Aura and John Maas
Ann and Ray Mack
Diane Markoff
Dr. Kurt A. McKissick
Amy McSwain and Garrick Skalski
Mayor Charles C. Meeker
Carolyn Mercer
Barbara and Don Moore
T.C. and Becky Morphis
Carolyn J. Morse and James W. Jorgenson
Sarah Myers
Elizabeth and Wes Newman
Rand Neyland
Charles Nintzel
Julie and Michael Papay
Pam and Edwin Patterson
Linda and Sam Pearsall
Laura and Gary Pendleton
Fleming Pfann
Etta D. Pisano and Jan A. Kylstra
Sally and Al Poland*
Jessica Poland and Jeff Bergman
Novie B. Ragan
Carol and George Retsch-Bogart
Sally Robertson
Mieke H. Rose
Linda L. Sanders and Matthew K. Moore
Mark R. Schulz
Tara Schwenzfeier
CeCe and Peter Scott*
Glenn Simon
Jeffery Smith
Jere and Richard Stevens
Shannon St. John and Tom Barber
Anne Stoddard and Ron Gallagher

Thomas Struhsaker
Sally Tiller
Blossom and George Tindall
Leslie Tobin
Lilly and Michael Topal
Debbie and Ken Tunnell
Terri and Allan Tyson
Milada A. Vachudova and Chad Bryant
Tina Van Itallie and Jim Anderson
Dave Vos
Diana L. Walstad
Jennifer Weiss and Bruce Hamilton
Ronald Wenda
Jeff Welty
Dr. Elisabeth Wheeler
Betty B. Williamson*
Carol Williamson
Robert P. Womack
Carolyn Wood
Barbara Yoder and Wendy Trueblood

Two-Year Members

Catherine Alguire
Deborah Amaral
Mary and Michael Andrews
Lois Ballen and Ken Morehead
David Barber
The Barney Family
Gerry Barrett
Tammy Blackard and Richard Cook
William C. Blackman
Barbara Blair
Bess Bowditch
Susan Bowers
Frederick Broadwell
Jerri Brock and Joe Lemanski
Karen Bronson and Robbie Link
Helen C. Brooks
Geraldine and Bob Bryan
Joe Bryan
May and Cotton Bryan*
Hal C. Bryson
Libby and Lee Buck
Bronson Bullock
Rebecca Burcham
Stephanie and Aaron Cain*
Angelo Capparella
Dr. Harold Carmel
Thomas Carson
Cecelia Carver
Anne M. Cassebaum
Dr. Linda M. Chappell
Chris Chinchar
Don Clement
Susan Cohen and Peter Goldberg
Lloyd Comstock
Jeanette and Tom Coppedge
Gail Crabtree
Tom Craven
Lisa Creasman
Linda and Earl Creutzburg
Jenny Crittendon
Gabriel Cumming
Jean and John Custer
Lauren A. Dame and James Boyle
James Davis
Hope Dearborn

Laurel A. Degernes
 Emmanuel J. Diliberto, Jr.*
 Ann and Max Drake
 Kristen Dunivant
 Ralph Earle
 Sally Earnest
 Amy Fain and Mark Roseman
 Ken Faircloth
 Deborah and Arthur Finn
 Margaret Fisher
 Gail, Grant and David Fowler
 Patricia and William Frey
 Irwin Fridovich
 Nick Fu
 Lena Gallitano
 Lyle Gardner
 Mary W. Garren
 Martha Geer
 Michael Gerhold
 Thomas German
 John Gerwin
 Kathy Gest and Mel Jones
 Ann Glassman
 Rita Goebel
 Nathalie and Charles Greene
 Erika Guttentag
 Racquel and Daniel Guy
 Kathryn and Nicholas Haddad
 David Hance
 Stephen Hartzell
 Martha and Martin Haslanger
 Eleanor and Bill Hasse
 Mitch Hazouri
 Dr. Laura E. Helms
 Margaret Helton
 Nancy Henley
 Dr. J. M. Hester
 Lou Ann Hobbs
 Susan Hoercher and Jeffrey Parkin
 Olivia Holding
 Brian F. Hooley
 David L. Hord
 Grace and Theodore Hovet
 J. Wilson Hunter
 Wendy Jacobs
 Andrew Jones
 Joan Jordan
 Tracy and Jim Joseph
 Marian and David Katzin
 Bowman Kelly
 Betty Kenan
 Alicia and Jeff Kleaveland
 David Knight
 Alice Kuzniar
 Joy R. Kwapien
 Richard E. LaRose
 Robert Lathlaen
 Heather Little and Matthew Channon
 John Little
 Gerry and Jim Luginbul
 Sarah Mabey and Chris Szell
 Dale Madren
 Christine E. Manda
 Claudia P. Mangel
 Peggy and Walter Mangler
 Melinda R. Marcus
 Mary M. Martorella

Daniel May
 Larry McRae
 Lisa Merschel and Steven Quinley
 Adam Meyer
 Kathryn and Hof Milam
 Susan Miller
 Rose Mills and Jeffrey Collins
 Dana Monemi
 Drue Moore
 Judy and Don Moore
 Laddie and Edna Munger
 Amy Nail
 Jamie and Scott Nunnally
 Jean and Thomas Nuzum
 Brad Oaks and Ian Palmquist
 Sara Oggel
 Charles Oldham, III
 Tracey Oliveto
 Claire and Rodney Overcash
 Rusty Painter
 Phyllis and Knowles Parker
 Mary J. Parks
 James B. Pate*
 Josie Ward Patton
 Karen and Ratan Piplani
 Elizabeth Plotkin
 Susan Pratt
 David Proper
 Anna and Trent Ragland
 Sandy Ray
 Rev. Anna L. Reynolds
 Renee Rice
 David Riley
 Ann Ringland
 Ann and John Rogers
 Cherie Rosemond
 Hal Rubin
 Marjorie A. Rudinsky
 Sallie Shuping-Russell and John Russell
 Carol Sable
 Nico Sanjaya
 Hazel L. Scheblik
 Elizabeth Scherrer
 Allen Serkin
 Nancy and David Siebens*
 Molly Simes
 Brant Sprunger
 Julie and Rick Staelin
 Marilyn and Ted Stapleton
 Toddi Steelman and Joe Sinsheimer
 Jon M. Stucky
 Jim Suiter
 Dr. Oscar Sussman
 Glenn Swope
 Joe Tarlton
 Christene and Michael Tashjian
 Caroline K. Thornton and W. Randall Ward
 Nadine Tope
 Amalie Tuffin
 Karen Untz
 Paulette Van de Zande
 Anna Van Dis and TJ Jones
 Rebecca Vidra
 Mark Wainwright
 Alison L. Webb
 Jordi Weinstock
 Paige West

Rebekah Wharton and Stephen A. Hren
 Melissa and James White
 Wendy White
 Whitney Wiggins
 Jennifer Williams
 Richard Wilson
 Lydia Y. Woodson*
 Clare Woodward
 Darlene and Ed Woolner
 Penny and Paul Young

One-Year Members

Dr. Diane M. Allen
 Jamie Allison
 Jackie Auzias de Turenne
 Audie Barefoot
 John Bell
 Jim Bell
 Jennifer Bennett
 Dorothea Bonds
 Glenn Bowles
 Ed Bowling
 Dolores Bradshaw
 Jo Ellen Brandmeyer
 Ruth Bromer
 Shane Brown
 Susan and Chris Bush
 Katherine Castles
 Deb Cavanaugh
 Carolyn Chamblee
 Wayne Clark
 Emily and Albert Cloud
 Jim Collier
 Joany Earle and Jon A. Condoret
 Robert Dale
 Tina and Jack Deason
 Paula Ecklund
 Carol Finley
 Karen Fisher
 Susan Fletcher
 Kate and Thomas Fonville
 Robert Fulcher
 Archie Gupton
 Roxane and Owen Gwyn
 Mary Hall
 Kathy and Larry Hancock
 Lonna and Richard Harkrader
 Stella Boswell and Craig Heinly
 Maureane Hoffman
 Jewel and Bob Hoogstoel
 Jane A. Hoppin
 Virginia Houk
 Wendy Howard
 Melissa and Michael Hudgens
 Sally Anne Hunsucker
 Marilyn Jansen
 Gloria W. Kanoy
 Dr. Martha Ann Keels and Dr. Dennis Clements
 Ann Kendall and Caroline Sikorsky
 Eve Keshen
 Warren Lewis*
 Mark Lindblad
 Melissa Little
 Robert Lucas
 Beth Gerall and Keith Luck
 Elaine and Lee Marcus
 Catherine and Greg Marquis

Paul McAndrew
 Liz and Greg Metz
 Dexter Morris*
 Mynn Paige
 Lee Parker
 Nancy and Peter Perault
 Scott Pierce
 Jeffrey Poley
 James Poole
 Mark Powell
 Susanne Powell
 Suzanne and Bill Powers
 Bubba Rawl
 Karen Rindge and Reid Wilson
 Susan S. Santini
 Margaret Scully
 Jane and Bruce Sharpe*
 Martha Sledge
 Dr. Douglas C. Smith
 Patricia A. Smith
 Harriet and Stu Solomon
 Janet G. Sparks
 Ellis E. Stern
 Patricia and Stanley Stutts
 Brian Swiger
 Edith Sylla
 Richard Thorsten
 Mette Tomkins
 Linda Wall
 Nan and Burt Weiss
 David White
 Mike Whitley
 Judi and David Wilkinson
 Timothy M. Williams
 Catherine and Mason Williams
 Amanda Williams*
 Tracy and Robert Winston
 Elizabeth Witman
 Lyell Wright
 David Wright
 Scott K. Young

In-Kind Gifts

Will Anderson of Kennon, Craver, Belo, Craig & McKee, PLLC
 Bass Lake Park & Retreat Center
 Patrick Bradshaw of Bradshaw & Robinson, LLP
 Tom Craven
 Angela and Jeff Fisher
 Hedgehog Holdings, LLC
 Alison Hill and Tandy Jones
 The John R. McAdams Company, Inc.
 Quantum Environmental, Inc.
 Kerry A. Shad
 Wyrick, Robbins, Yates & Ponton LLP
 Matt York of Helms Mulliss & Wicker, PLLC

****TLC members who asked their companies to match their gifts in 2004-05***

TLC would like to thank all members who give to TLC through their workplace giving campaigns. Please let us know if you are giving this way.



Board of Directors

John R. McAdams, President
Orange County

Chuck Neely, Vice President
Wake County

Anne Stoddard, Secretary
Orange County

Vicky Will, Treasurer
Wake County

William Brian Jr.
Durham County

Rebecca Bumgardner
Wake County

Celeste Burns
Durham County

Jonathan Howes
Orange County

Ayden Lee, Jr.
Johnston County

Steven Levitas
Wake County

John McArthur
Wake County

Sonya McKay
Wake County

Lovick Miller
Chatham County

Thrus Morton
Durham County

Chris Mumma
Durham County

Robert Naylor
Orange County

Al Purrington
Wake County

Ron Strom
Orange County

Bud Taylor
Lee County

Nicholas Tennyson
Durham County

Dale Threatt-Taylor
Wake County

Staff

Kevin Brice
Executive Director

Emily Ander
Conservation Projects Manager

Karen Bullock, CPA
Accountant

Jennifer Colletti
Communications Coordinator

Cheryl Chamblee
Assistant Director of Development

Tom Craven, MEM MF
Director of Stewardship

Tandy Jones
Land Protection Specialist

Tracy Joseph
Director of Development

Jeff Masten, MRP
Director of Conservation Strategies

Liz Metz
Development Coordinator

Doug Nicholas
Director of Communications

Jessica Poland
Office Manager

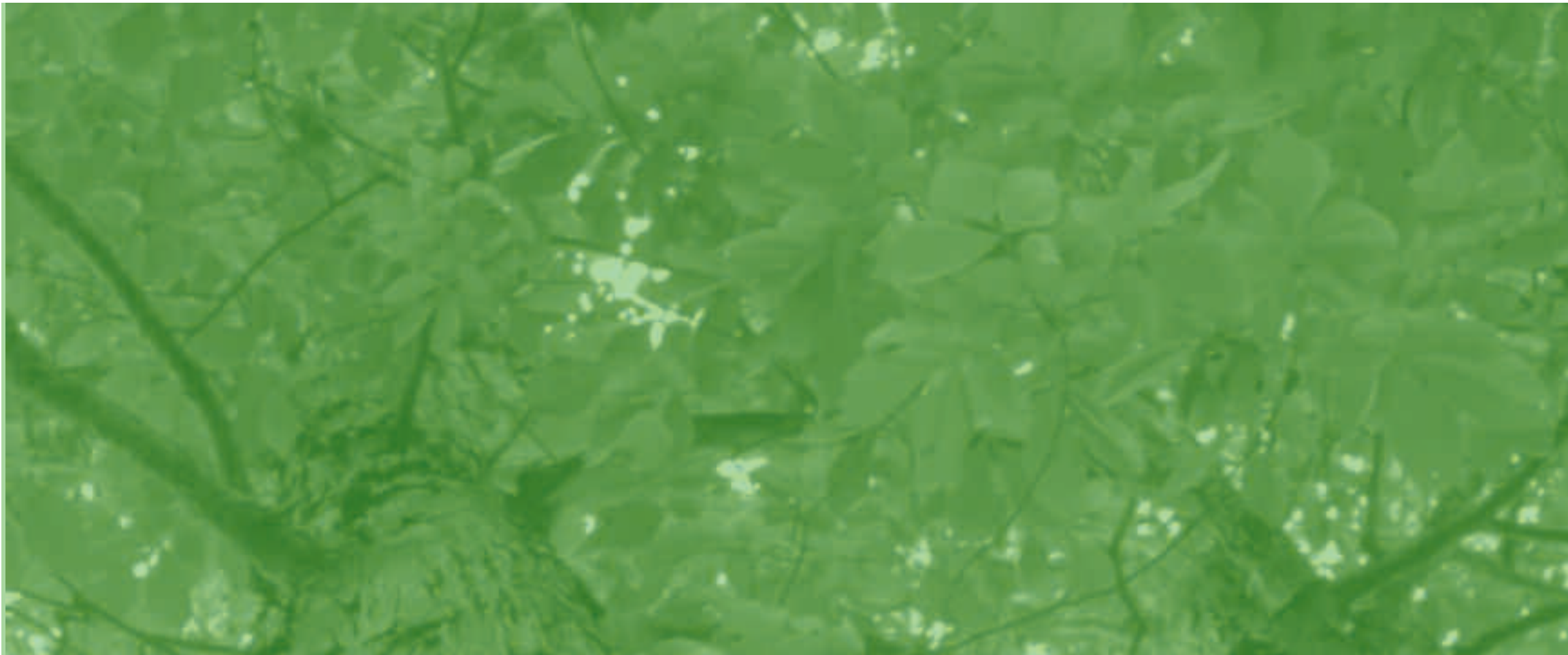
Elizabeth Rives, JD
Land Protection Specialist

Doug Sprouse
Stewardship Specialist

A copy of the license and financial information of the Triangle Land Conservancy may be obtained from the Department of Human Resources, Charitable Solicitations Licensing Branch by calling 919-733-4510. Registration does not imply endorsement, approval, or recommendation by the state.

Printed on Recycled Paper using Soy-based ink







1101 Haynes Street, Suite 205
Raleigh, North Carolina 27604

919.833-3662
www.tlc-nc.org
info@tlc-nc.org